

ARMY TM 11-5895-543-34P  
NAVY NAVELEX 0967-L P-616-1020  
AIR FORCE TO31W1-2G-234-2

**DIRECT SUPPORT AND GENERAL SUPPORT**

**MAINTENANCE REPAIR PARTS**

**AND SPECIAL TOOLS LISTS**

**(INCLUDING DEPOT MAINTENANCE REPAIR**

**PARTS AND SPCECIAL TOOLS)**

**FOR**

**SYNCHRONIZERS, ELECTRICAL**

**SN-394(V)1/G (NSN 5895-00-999-2435)**

**AND**

**SN-394(V)2/G (NSN 5895-00-.257-1093)**

---

**DEPARTMENTS OF THE ARMY, THE NAVY, AND THE AIR FORCE**  
**FEBRUARY 1978**

TECHNICAL MANUAL  
No.11-5895-543-34P  
TECHNICAL MANUAL  
NAVELEX 0967-LP-616-1020  
TECHNICAL ORDER  
TO 31W1-2G-234-2

DEPARTMENTS OF THE ARMY,  
THE NAVY, AND THE AIR FORCE

WASHINGTON, DC, 16 February 1978

**DIRECT SUPPORT AND GENERAL SUPPORT MAINTENANCE**

**REPAIR PARTS AND SPECIAL TOOLS LISTS**

**(INCLUDING DEPOT MAINTENANCE REPAIR PARTS**

**AND SPECIAL TOOLS)**

**FOR**

**SYNCHRONIZERS, ELECTRICAL**

**SN-394(V)1/G (NSN 5895-00-999-2435)**

**AND**

**SN-394(V)2/G (NSN 5895-00-257-1093)**

**Current as of 16 August 1977**

**REPORTING OF ERRORS**

You can improve this manual by recommending improvements using DA Form 2028-2 (Test) located in the back of the manual. Simply tear out the self addressed form, fill it out as shown on the sample, fold it where shown, and drop it in the mail.

If there are no blank DA Form 2028-2 (Test) in the back of your manual, use the standard DA Form 2028 (Recommended Changes to Publications and Blank Forms) and forward to the Commander, US Army Electronics Command, ATTN: DRSEL-MA-Q, Fort Monmouth, NJ 07703.

For Air Force, use USAFLC Form 252 (Request for TO Revision or Change), Forward direct to prim ALCIMST.

For Navy, mail comments direct to: Commander, Naval Electronics Systems Command, Code 4903, WASH DC 20360. In either case a reply will be furnished direct to you.

\*This manual together with TM 11-5895-543-20P/NAVELEX 0967-LP-616-1010/TO 31WI-2G-234-1, supersedes TM 11-5895-543-25P/NAVSHIPS 0967-220-6030/TO 31W1-2G-234, 1 June 1967.

## Table of Contents

SECTION		Page	Illus Figure
	I. Introduction.....	1	
	II. Repair parts list .....	5	
Group	00 Synchronizers, Electrical SN-394(V)1/G and SN-394(V)2/G .....	5	1
	01 Case, Electrical Synchronizer CY-4918/G .....	7	2,3
	02 Synchronizer-Monitor SN-395/G .....	17	4,5
	0201 Electrical Synchronizer Subassembly PL-1120/G.....	23	6
	0202 Electrical Synchronizer Subassembly PL- 11211G .....	31	7
	0203 Electrical Synchronizer Subassembly PL-11221G .....	35	8
	0204 Electrical Synchronizer Subassembly PL- 1123/G .....	43	9
	0205 Electrical Synchronizer Subassembly PL-1124/G.....	49	10
	0206 Synchronizer verification module .....	53	11
	03 Electrical Synchronizer Subassembly PL-1119/G.....	59	12
	04 Power Supply PP-4540/G.....	63	13
SECTION	III. Special tools list.....	65	
Group	30 Special Tool, Extender Card Assembly SMD-532022 .....	65	14
	31 Special Tool, Extender Card Assembly SMD-532022 .....	67	15
SECTION	IV. National stock number and part number index .....	68	

## SECTION I. INTRODUCTION

### 1. Scope

This manual lists spares and repair parts; special tools; special test, measurement, and diagnostic equipment (TMDE), and other special support equipment required for performance of direct support and general support maintenance of the SG-394(V)1/G and SG-394(V)2/G. It authorizes the requisitioning and issue of spares and repair parts as indicated by the source and maintenance codes.

### 2. General

This Repair Parts and Special Tools List is divided into the following sections:

a. Section II. Repair Parts List. A list of spares and repair parts authorized for use in the performance of maintenance. The list also includes parts which must be removed for replacement of the authorized parts. Parts lists are composed of functional groups in numeric sequence, with the parts in each group listed in figure and item number sequence.

b. Section III. Special Tools List. A list of special tools, special TMDE, and other special support equipment authorized for the performance of maintenance.

c. Section IV. National Stock Number and Part Number Index. A list, in National item identification number (NIIN) sequence, of all National stock numbers (NSN) appearing in the listings, followed by a list, in alphanumeric sequence, of all part numbers appearing in the listings. National stock numbers and part numbers are cross-referenced to each illustration figure and item number appearance.

### 3. Explanation of Columns

a. Illustration. This column is divided as follows:

(1) Figure number. Indicates the figure number of the illustration on which the item is shown.

(2) Item number. The number used to identify item called out in the illustration.

b. Source, Maintenance, and Recoverability

(SMR) Codes.

(1) Source code. Source codes indicate the manner of acquiring support items for maintenance, repair, or overhaul of end items. Source codes are entered in the first and second positions of the Uniform SMR Code format as follows:

Code	Definition
PA	Item procured and stocked for anticipated or known usage.
PE	Support equipment procured and stocked for initial issue or outfitting to specified maintenance repair activities.
XD	A support item that is not stocked. When required, item will be procured through normal supply channels.

#### NOTE

Cannibalization or salvage may be used as a source of supply for any items source coded above except those coded XA and aircraft support items as restricted by AR 700-42 - X

(2) Maintenance code. Maintenance codes are assigned to indicate the levels of maintenance authorized to USE and REPAIR support items. The maintenance codes are entered in the third and fourth positions of the Uniform SMR Code format as follows:

(a) The maintenance code entered in the third position will indicate the lowest maintenance level authorized to remove, replace, and use the support item. The maintenance code entered in the third position will indicate one of the following levels of maintenance:

Code	Application /Explanation
O	Support item is removed, replaced, used at the organizational level.
F	Support item is removed, replaced, used at the direct support level.
H	Support item is removed, replaced, used at the general support level.
D	Support items that are removed, replaced, used at depot, mobile depot, specialized repair activity only.

(b) The maintenance code entered in the fourth position indicates whether the item is to be repaired and identifies the lowest maintenance level with the capability to perform complete repair (i.e., all authorized maintenance functions). This position will contain one of the following maintenance codes:

Code	Application/Explanation
F	The lowest maintenance level capable of

Code Application/Explanation  
complete repair of the support item is the direct support level.

H The lowest maintenance level capable of complete repair of the support item is the general support level.

D The lowest maintenance level capable of complete repair of the support item is the depot level.

Z Nonreparable. No repair is authorized.

(3) *Recoverability code*. Recoverability codes are assigned to support items to indicate the disposition action on unserviceable items. The recoverability code is entered in the fifth position of the Uniform SM R Code format as follow s:

*Recoverability*

*codes*

*Definition*

z Nonreparable item. When unserviceable, condemn and dispose at the level indicated in position 3.

F Repairable item. When uneconomically repairable, condemn and dispose at the direct support level.

H Repairable item. When uneconomically repairable, condemn and dispose at the general support level.

D Repairable item. When beyond lower level repair capability, return to depot. Con- determination and disposal not authorized below depot level.

L Repairable item. Repair, condemnation, and disposal not authorized below depot/specialized repair activity level.

c. National Stock Number. Indicates the National stock number assigned to the item and will be used for requisitioning purposes.

d. Part Number. Indicates the primary number used by the manufacturer (individual, company, firm, corporation, or Government activity), which controls the design and characteristics of the item by means of its engineering drawings, specifications, standards, and inspection requirements to identify an item or range of items.

#### NOTE

When a stock numbered item is requisitioned, the repair part received may have a different part number than the part being replaced.

e. Federal Supply Code for Manufacturers (FSCM). The FSCM is a 5-digit numeric code listed in SB 708-42 which is used to identify the manufacturer, distributor, or Government agency, etc.

f. Description. Indicates the Federal item name and, if required, a minimum description to identify

g. Unit of Measure (U'IJ. Indicates the standard of the basic quantity of the listed item as used in performing the actual maintenance function. This measure is expressed by a two-character alphabetical abbreviation (e.g., ea, in, pr, etc). When the unit of measure differs from the unit of issue, the lowest unit of issue that will satisfy the required units of measure will be requisitioned.

h. Quantity Incorporated in Unit. Indicates the quantity of the item used in the breakout shown on the illustration figure, which is prepared for a functional group, subfunctional group, or an assembly.

#### 4. Special Information

The following publications pertain to the SN-394(V)1/G and SN-3941V)2!G and its components:

TM 11-5895-54:3-12, Synchronizer, Electrical SN-394(V)1/G

TM 11 -5895-54:3 20P, Synchronizer, Electrical

SN ;;94-!V)!'(G and SN 39.(V)2/G(

TM 11 .5895- 543 -35, Synchronizer, Electrical SN-

#### 5. How to Locate Repair Parts

a. When National stock number or part number is unknown.

(1) First. Using the table of contents, determine the functional group within which the item belongs. This is necessary since illustrations are prepared for functional groups and listings are divided into the same groups.

(2) Second Find the illustration covering the functional group to which the item belongs.

(3) Third. Identify the item on the illustration and note the illustration figure and item number of the item.

(4) Fourth. Using the Repair Parts Listing, find the figure and item number noted on the illustration.

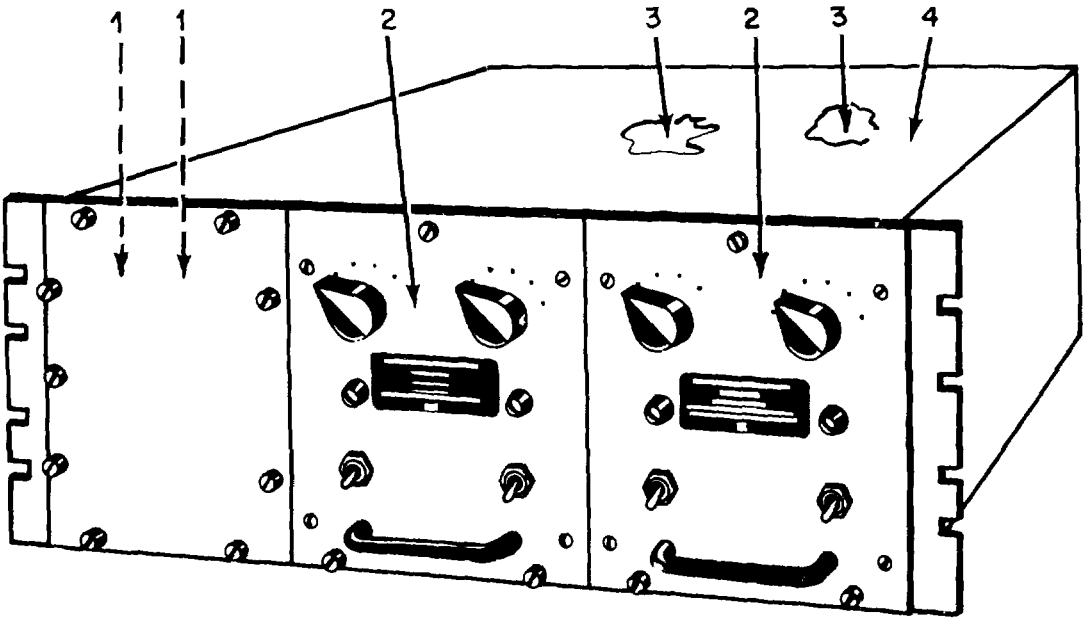
b. When National stock number or part number is known.

(1) First. Using the Index of National Stock Numbers and Part Numbers, find the pertinent National stock number or part number. This index is in NIIN sequence followed by a list of part num- bers in alphanumeric sequence, cross-referenced to the illustration figure number and item number.

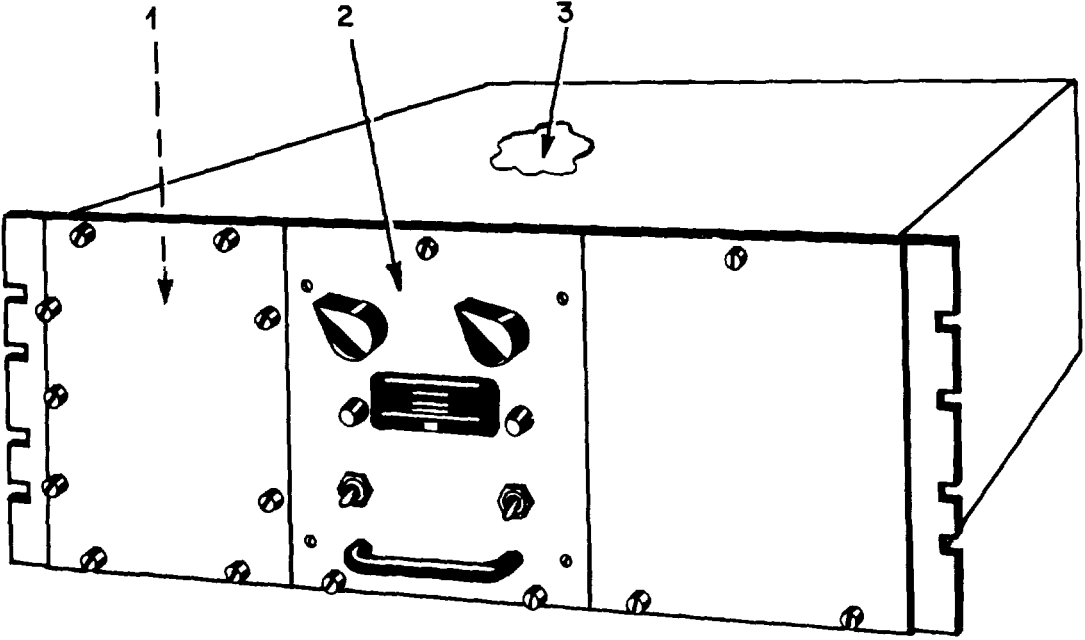
(2) Second. After finding the figure and item number, locate the figure and item number in the repair parts list.

#### 6. Abbreviations

Not applicable.



DUAL CONFIGURATION



SINGLE CONFIGURATION

EL4CB001

Figure 1 . Synchronizers, Electrical SN-394(V)1/G and SN-394(V)2/G .

SECTION II

TM11-5895-543-34P/NAVELEX 0967-LP-616-1020/TO 31W1-2G-234-2

(1) ILLUSTRATION		(2)	(3)	(4)	(5)	(6) DESCRIPTION	(7)	(8)
(a) FIG NO.	(b) ITEM NO.	SMR CODE	NATIONAL STOCK NUMBER	PART NUMBER	FSCM	USABLE ON CODE	U/M	QTY INC IN UNIT
						GROUP 00 SYNCHRONIZERS,ELECTRICAL SN-394(V)D/G AND SN-394(VI2/G		
1	1	PAODL	5895-00-999-2441	PL-L1119/G	80058	ELECTRICAL,SYNC (USE ON SN-394(V)I/G)	EA	1
1	1	PAODL	5895-00-999-2441	PL-1L19/G	80058	ELECTRICAL,SYNC (USE ON SN-394(V)2/G)	EA	2
1	2	PAOFF	5895-00999-2440	SN-395/G	80058	SYNCHRONIZER-MON (USE ON SN-394(V)1/G)	EA	11
1	2	PAOFF	5895-00-999-2440	SN-395/G	80058	SYNCHRONIZER-MON (USE ON SN3941V)2/G)	EA	2
1	3	PAOFF	5965-00-926-0806	PP-4540/G	80058	POWER SUPPLY (USE ON SN-394(VI1/G)	EA	1
1	3	PAOFF	5965-00-926-0806	PP-4540/G	80058	POWER SUPPLY (USE ON SN-394(V)2/G	EA	2
1	4	PAFHH	5895-00-999-2434	CY-4918/G	80058	CASE,ELEC EQUIP	EA	1
					<b>5</b>			

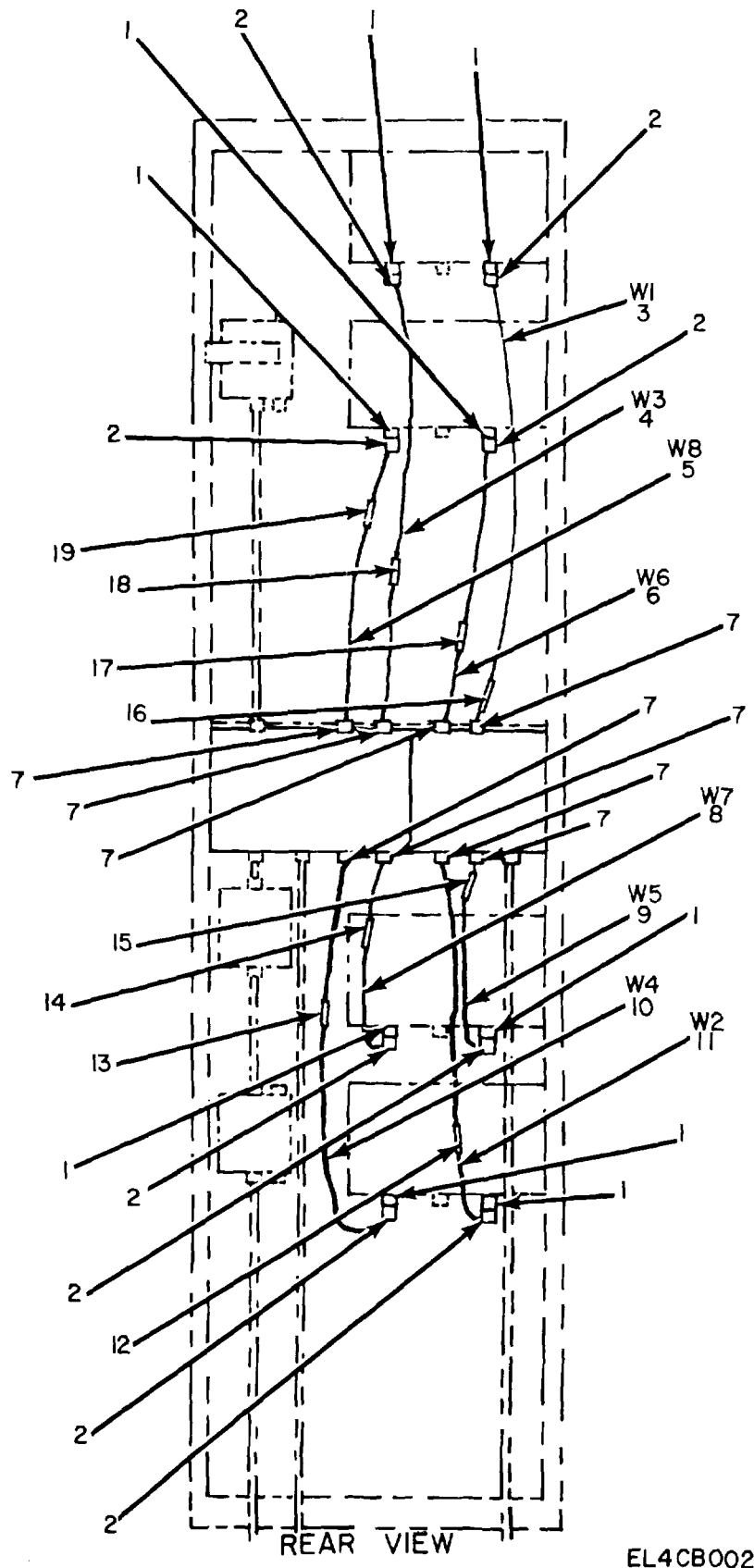


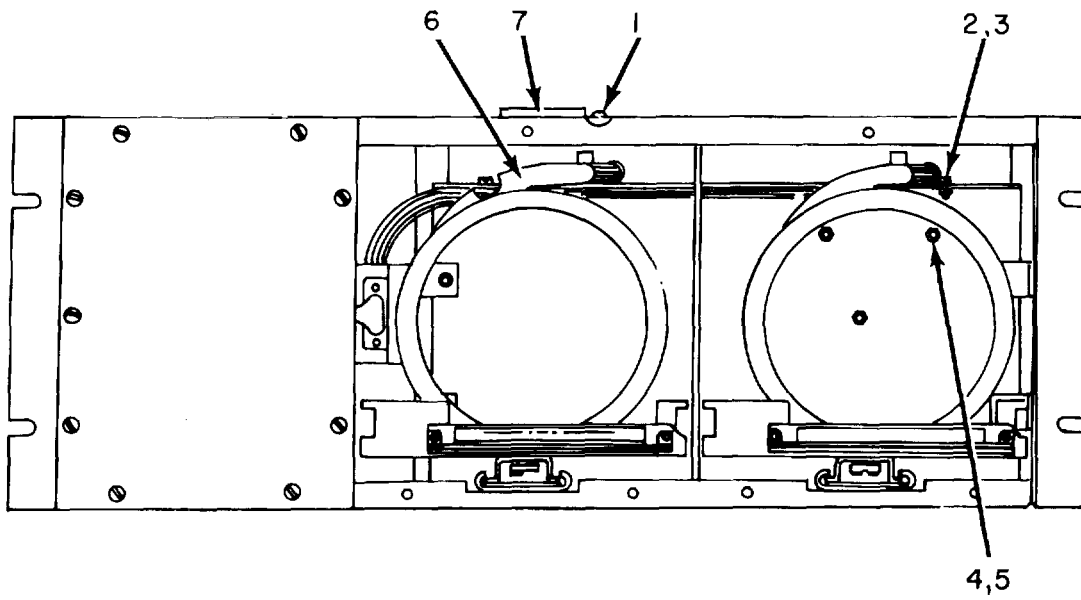
Figure 2 . Case, Electrical Synchronizer CY-4918/G Interconnecting Cable Assemblies .



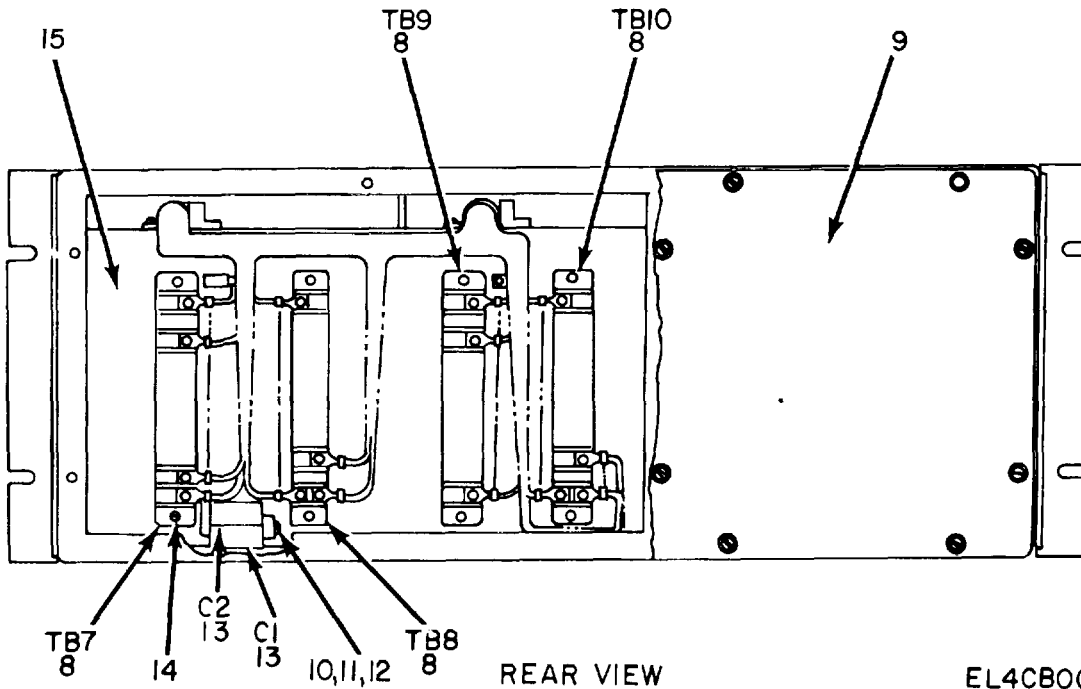
## SECTION II

TM11-5895-543-34P/NAVELEX 0967-LP-616-1020/TO 31W1-2G-234-2

(1) ILLUSTRATION		(2)	(3)	(4)	(5)	(6) DESCRIPTION	(7)	(8)
(a) FIG NO.	(b) ITEM NO.	SMR CODE	NATIONAL STOCK NUMBER	PART NUMBER	FSCM	USABLE ON CODE	U/M	QTY INC IN UNIT
						GROUP 01 CASE,ELFCTRICAL SYNCHRONIZER CY-4918/G		
2	1	PAFZZ	5935-00-241-0232	MS310882-029P	96906	CONNECTOR.PLUG,FLEC	EA	8
2	2	PAHZZ	5935-00-928-1960	SM8546946	80063	ADAPTER,CABLE CONN	EA	8
2	3	PAHZZ	5995-00-933-6851	SMD546972-01	80063	CABLE,POWER,ELEC	EA	1
2	4	PAHZZ	5995-00-933-6849	SNM546972-03	80063	CABLE,POWER,ELEC	EA	1
2	5	PAHZZ	5995-00-933-6844	SM0546977-08	80063	CA8LE,POWER,ELEC	EA	1
2	6	PAHZZ	5995-00-933-6846	SMD546972-06	80063	CABLE,POWER,ELEC	EA	1
2	7	PAHZZ	5975-00-T07-6729	5331	59730	BOX CONNFCTDR,ELEC	EA	8
2	8	PAHZZ	5995-00-933-6845	SMD546912-07	80063	CABLE,POWER,ELEC	EA	1
2	4	PAHZZ	5995-00-933-6847	SMD546977-05	80063	CABLE,PODWFR,ELEC	EA	1
2	13	PAHZZ	5995-00-933-6848	S5MD46972-04	80063	CABLE,POWER,ELEC	EA	1
2	11	PAHZZ	5995-00-933-6850	SNM546972-02	80063	CABLE,POWER,ELEC	EA	1
2	12	XDHZZ		SMC532036-02	80063	BAND,MARKER,CA W2	EA	1
2	13	XDHZZ		SMC532036-04	80063	BAND,MARKER,CA W4	EA	2
2	14	X5HZZ		SMC532036-07	80063	BAND,MARKER,CA W7	EA	1
2	15	XDHZZ		SMC532036-05	80063	BAND,MARKER,CA W5	EA	1
2	16	XDHZZ		SMC532036-01	80063	BAND,MARKER,CA W1	EA	1
2	17	XDHZZ		SMC532016-06	83063	BAND,MARKFR,CA W6	EA	1
2	18	XDHZZ		SMC532036-03	80063	BAND,MARKFR,CA W3	EA	2
2	19	XDHZZ		SMC532036-08	80063	BAND,MARKER,CA W8	EA	1
<b>7/(8 blank)</b>								



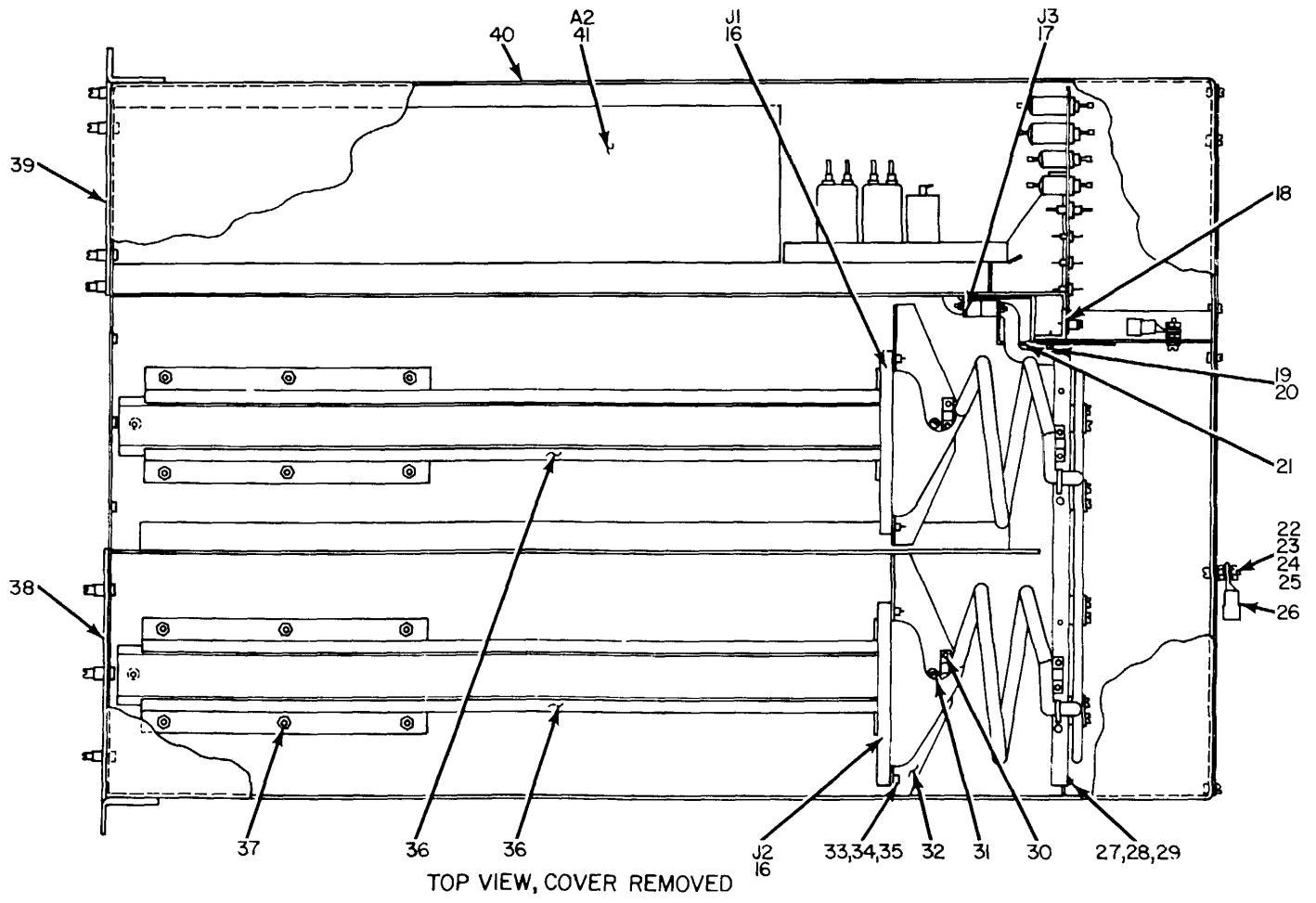
FRONT VIEW



REAR VIEW

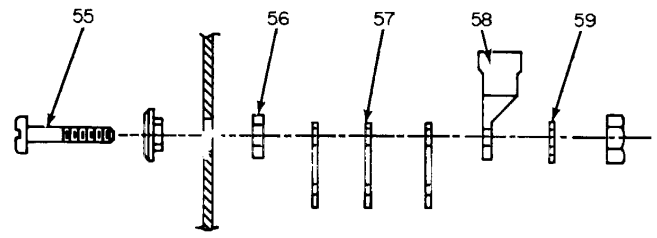
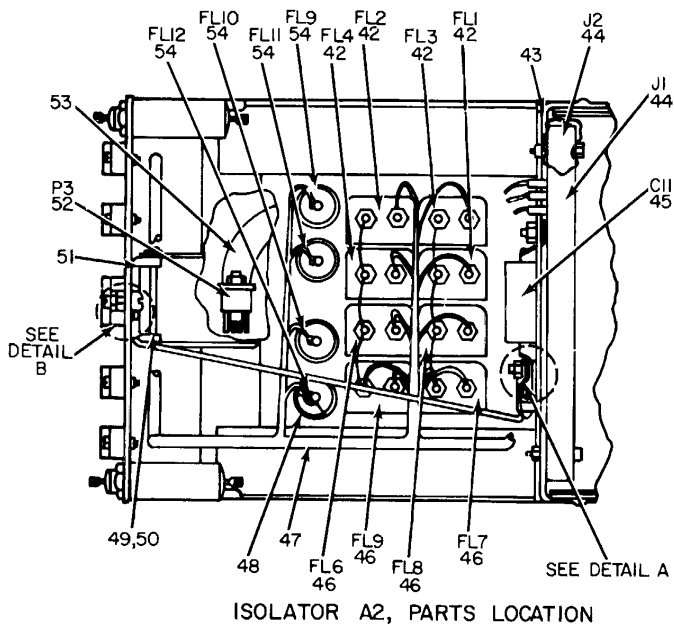
EL4CB003

Figure 3. Case, Electrical Synchronizer CY-4918/G (Sheet 1 of 4).

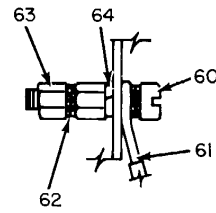


EL4CB004

Figure 3. Case, Electrical Synchronizer CY-4918/G (Sheet 2 of 4).



DETAIL A



DETAIL B

EL4CB005

Figure 3. Case, Electrical Synchronizer CY-4918/G (Sheet 3 of 4).

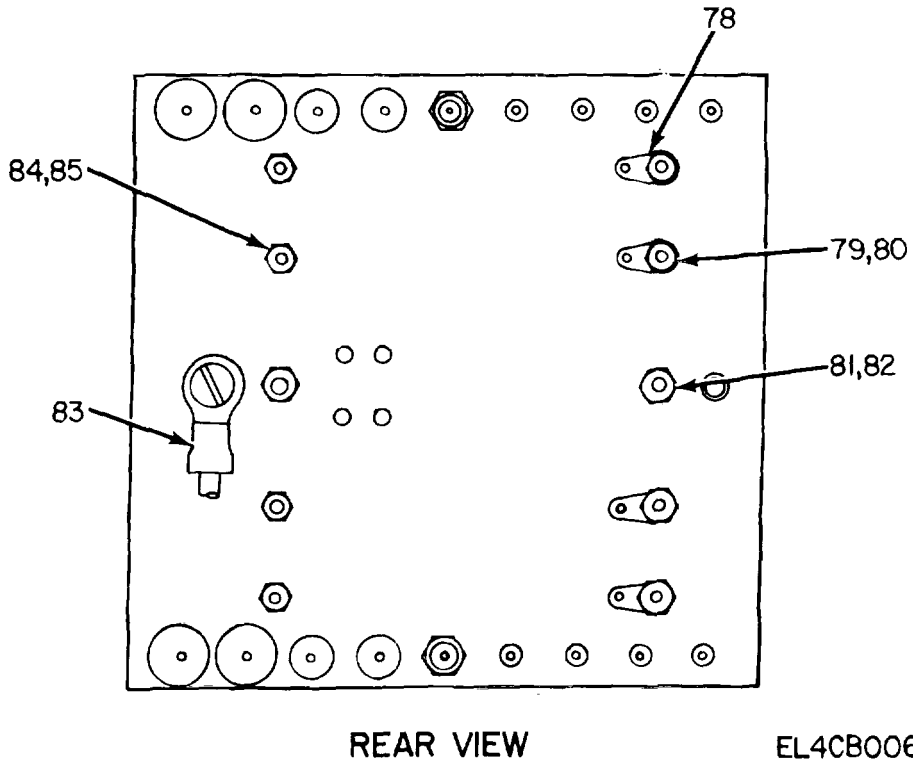
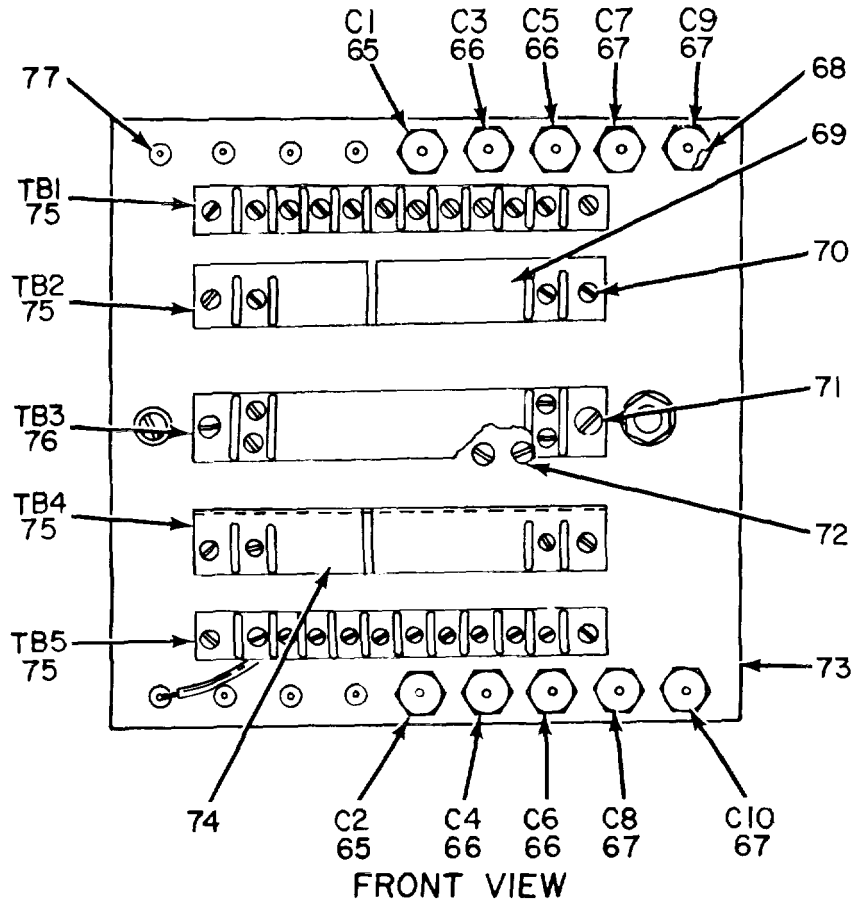


Figure 3. Case, Electrical Synchronizer CY-4918/G (Sheet 4 of 4).

## SECTION II

TM11-5895-543-34P/NAVELEX 0967-LP-616-1020/TO 31W1-2G-234-2

(1) ILLUSTRATION		(2)	(3)	(4)	(5)	(6) DESCRIPTION	(7)	(8)
(a) FIG NO.	(b) ITEM NO.	SMR CODE	NATIONAL STOCK NUMBER	PART NUMBER	FSCM	USABLE ON CODE	U/M	QTY INC IN UNIT
3	1	PAHZZ	5305-00-253-5604	MS21318-2	96906	SCPEW,DRIVE	EA	2
3	2	PAHZZ	5305-00-889-2998	MS35206-216	96906	SCREW,MACHINE	EA	4
3	3	PAHZZ	5310-00-951-4679	MS15795-203	96906	WASHER,FLAT	EA	9
3	4	PAHZZ	5310-00-013-4530	MS35649-62	96906	NUT,PLAIN,HEXAGON	EA	8
3	5	XDHZZ		MS15795-205	96906	WASHER,FLAT	EA	8
3	6	XDHZZ		S5M566919	80063	CABLE ASSEMBLY,RET	EA	1
3	7	XDHZZ		SMCS46896-01	80063	PLATE,IDENT	EA	1
3	8	PAHZZ	5940-00-818-8903	26TR12	56289	TERMINAL BOARD	EA	4
3	1	XDHZZ		SM0546889	80063	COVER,REPAIR	EA	1
3	10	PAHZZ	5305-00-558-4889	MS35223-14	96906	SCREW,MACHINE	EA	3
3	1	PAHZZ	5310-00-616-3554	MS35335-29	96906	HASHER,LOCK	EA	3
3	12	XDHZZ		SM8551603	80063	TERMINAL,LUG	EA	3
3	13	PAHZZ	5410-00-835-2643	CTMIO4VCK	81349	CAPACITOR,FXO,PLSTC	EA	2
3	14	PAHZZ	5305-00-889-3001	MS35206-231	96906	SCREW,MACHINE	EA	8
3	15	X8HZZ		SMD546886	80063	PLATE,BARRIER,SM	EA	1
3	1	PAFZZ	5935-00-926-7405	MS521097-4-26	96906	CONNECTOR,PCPT,ELEC	EA	2
3	1	PAFZZ	5935-00-899-4727	MS24009-2	96906	CCNNECTCR,RCPT,ELEC	EA	1
3	13	XDHZZ		SM8546891	80063	STOP,ANGLE	EA	1
3	19	PAHZZ	5305-00-984-4988	MS35206-25	96906	SCREW,MACHINE	EA	2
3	23	PAHZZ	5310-00-045-4007	MS35338-41	96906	WASHER,LOCK-SPRING	EA	10
3	21	XDHZZ		SMR546941	80063	BRACKET,CONN MTG	EA	1
3	27	PAHZZ	5305-00-988-1725	MS35206-281	96906	SCREW,MACHINE	EA	2
3	23	PAHZZ	5310-00-809-4058	MS27183-10	96906	WASHFR,FLAT	EA	2
3	24	PAHZZ	5313-00-209-0786	M35335-33	96906	WASHER,LOCK	EA	4
3	25	PAHZZ	5305-00-054-5636	MS51957-2	96906	NUT,PLAIN,HEXAGON	EA	4
3	26	PAHZZ	5940-E0-660-3634	MS25036-57	96906	TERMINAL,LUG	EA	2
3	27	PAHZZ	5305-00-984-6193	MS35206-245	96906	SCREW.MACHINE	EA	4
3	28	XDHZZ		M515795-207	96906	WASHER,FLAT	EA	4
3	24	PAHZZ	5310-00-045-3299	MS35338-42	96906	WASHER,LOCK-SPPING	EA	20
3	33	XDHZZ		MS35241-20	96906	SCREW,MACHINE	EA	4
3	31	PAHZZ	5335-00-984-6196	MS35225-43	96906	SCREW,MACHINE	EA	16
3	32	XDHZZ		SMC546915	80063	BRACKET,CONN MTG	EA	2
3	33	PAHZZ	5305-00-984-4976	MS35206-219	96906	SCREW,MACIINE	EA	4
3	34	PAHZZ	5310-00-543-2410	MS35338-40	96906	WASHER,LOCK-SPRING	EA	14
3	35	XDHZZ		MS35649-42	96906	NUT,PLAIN,HEXAGON	EA	13
3	35	XDHZZ		SMD546953	80063	SLIDE	EA	2
3	37	XDHZZ		MS20364-832A	96906	NUT,SELF-LOCKING	EA	16
3	38	XDHZZ		SMC546911	80063	PANEL,BLANK	EA	1
3	39	XDHZZ		SMC546904	80061	COVER.FRONT	EA	1
3	40	XDHZZ		SMO546879	80063	WELDMENT	EA	1
					<b>13</b>			

## SECTION II

TM11-5895-543-34P/NAVELEX 0967-LP-616-1020/TO 31W1-2G-234-2

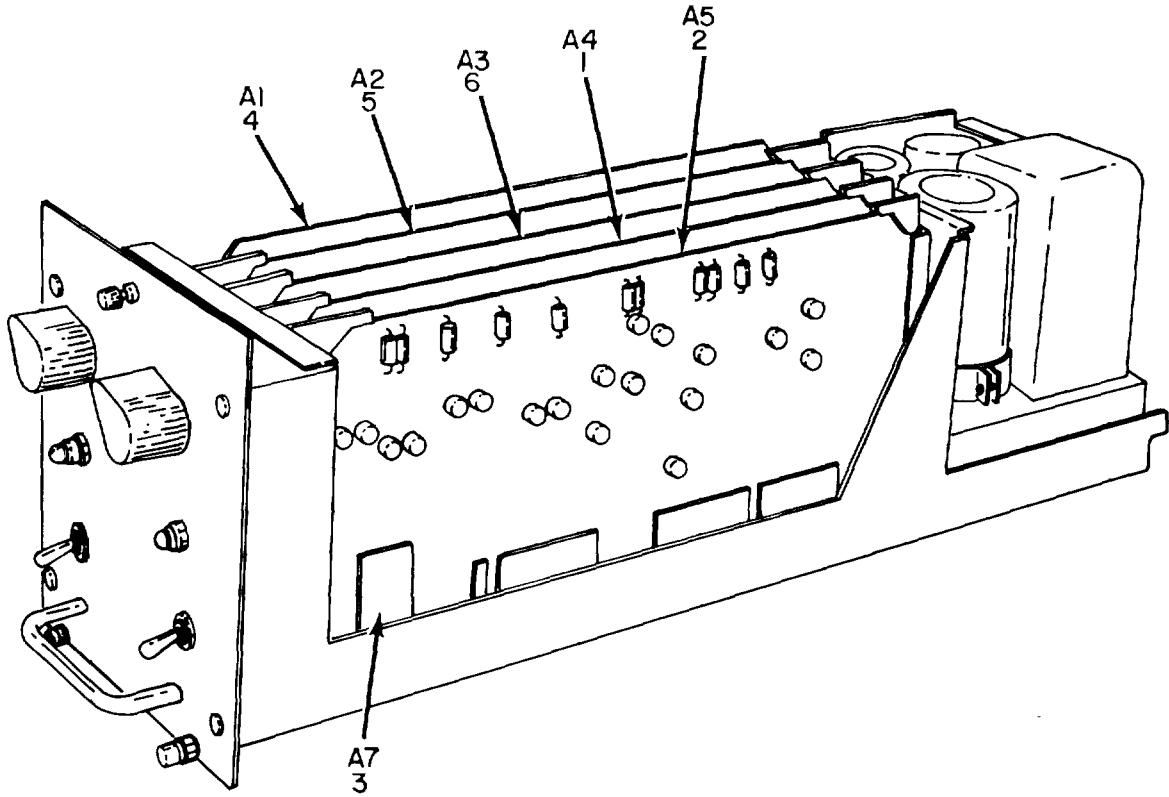
(1) ILLUSTRATION		(2)	(3)	(4)	(5)	(6) DESCRIPTION	(7)	(8)
(a) FIG NO.	(b) ITEM NO.	SMR CODE	NATIONAL STOCK NUMBER	PART NUMBER	FSCM	USABLE ON CODE	U/M	QTY INC IN UNIT
3	41	XDFFF		SMD546908	80063	ISOLATOR	EA	1
3	42	PAHZZ	5915-00-933-4932	SM8546970-02	80063	FILTER,RADIO INTRTF	EA	4
3	43	XDHZZ		SMD546880	8006B	WELDMENT	EA	1
3	44	XDFZZ		MS21097-2-26	96906	CONNECTOP,RCPT,ELEC	EA	2
3	45	PAHZZ	5910-00-834-9765	CTM474VAK	81349	CAPACITOR,FXD,PLSTC	EA	1
3	46	PAHZZ	5915-00-917-9856	SMB546970-01	80063	FILTER,RADIO INTRF	EA	4
3	47	XDHZZ		5r4055159T	80063	CABLE ASSEMBLY,RERO	EA	1
3	48	PAHZZ	5310-00-550-3503	MS35335-36	96906	WASHER LOCK	EA	4
3	49	XDHZZ		SMB546899	80063	PIN,PIVOT	EA	1
3	50	PAHZZ	5310-00-282-5322	MS16633-12	96906	RING,RETAINING	EA	2
3	51	XDHZZ		SMB46900	80063	BLOCK,RIVOT	EA	1
3	52	PAFZZ	5935-00-886-4286	MS24010-2	96906	CONNECTOR,RCPT,ELEC	EA	1
3	53	XDHZZ		SMC32043	80063	CABLE ASSEMBLY,BLK	EA	1
3	54	PAHZZ	5915-00-688-7158	SMB32013	80063	FILTER,RADIO INTRF	EA	4
3	55	PAHZZ	5305-00-889-30000	MS35206-230	96906	SCREW,MACHINE	EA	1
3	56	XDHZZ		NW6-3126	95987	WASHER,NON-METALLIC	EA	1
3	57	PAHZZ	5940-00-050-2308	MS35431-3	96906	TERMINAL,LUG	EA	4
3	58	PAHZZ	5940-00-204-8990	MS25036-11	96906	TERMINAL,LUG	EA	1
3	59	PAHZZ	5310-00-209-0788	MS35335-30	96906	WASHER,LOCK	EA	2
3	60	PAHZZ	5305-00-988-1725	MS35206-281	96906	SCREW,MACHINE	EA	1
3	61	PAHZZ	5940-00-660-3634	MS25036-57	96906	TERMINAL,LUG	EA	1
3	62	XDHZZ		MS35334-10	96906	WASHER,LOCK	EA	2
3	63	PAHZZ	5310-00-772-3887	MS51967-1	96906	NUT,PLAIN,HEXAGON	EA	2
3	64	PAHZZ	5310-00-582-5965	MS35338-25	96906	WASHER,LOCK	EA	1
3	65	PAHZZ	5910-00-068-3302	CK72AX102M	81349	CAPACITOR,FXD,CER	EA	2
3	66	XDHZZ		CZ24BEB104K	81349	CAPACITOR,FXD,PAPER	EA	4
3	67	XDHZZ		CZ24BEB474K	81349	CAPACITOR,FXD,PAPER	EA	4
3	68	PAHZZ	5310-00-514-6674	MS35335-34	96906	WASHER,LOCK	EA	8
3	69	XDHZZ		SMB532007	80063	STRIP,JUMPER	EA	2
3	70	PAHZZ	5305-00-983-6730	MS35206-218	96906	SCREW,MACHINE	EA	12
3	71	PAHZZ	5305-00-889-3001	MS35206-231	96906	SCREW,MACHINE	EA	2
3	72	PAHZZ	5305-00-357-6641	MS35190-6641	96906	SCREW,MACHINE	EA	4
3	73	XDHZZ		SMD46898	80063	PLATE,R CMPNT MTG	EA	1
3	74	XDHZZ		SMB32008	80063	STRIP,JUMPER	EA	2
3	75	PAHZZ	5940-00-836-7401	25TB10	81349	TERMINAL BOARD	EA	4
3	76	PAHZZ	5940-00-889-4815	26TB10	81349	TERMINAL BOARD	EA	1
3	77	PAHZZ	5940-00-926-0012	FT03-9803	56289	TERMINAL,FEED THRU	EA	8
3	78	PAHZZ	5940-00-614-0537	MS35431-1	96906	TERMINAL,LUG	EA	24
3	79	XDHZZ		SMB532012	80063	WASHER,SHOULDER	EA	3
3	80	PAHZZ	5310-00-616-3554	96906	80063	WASHER,LOCK	EA	8
					<b>14</b>			

SECTION II

TM11-5895-543-34P/NAVELEX 0967-LP-616-1020/TO 31W1-2G-234-2

(1) ILLUSTRATION		(2)	(3)	(4)	(5)	(6)	(7)	(8)
(a) FIG NO.	(b) ITEM NO.	SMR CODE	NATIONAL STOCK NUMBER	PART NUMBER	FSCM	DESCRIPTION  USABLE ON CODE	U/M	QTY INC IN UNIT
3	81	PAHZZ	5310-00-045-4007	MS35338-4L	96906	WASHER,LOCK-SPRING	EA	3
3	82	PAHZZ	5310-00-013-4530	MS35649-62	96906	NUT,PLAIN,HEXAGON	EA	4
3	83	PAHZZ	5940-00-283-5280	MS25036-6	96906	TERMINAL,LUG	EA	2
3	84	PAHZZ	5310-00-543-2410	MS35338-40	96906	WASHER LOCK-SPRING	EA	2
3	85	XDHZZ		MS35649-42	96906	NUT,PLATN,EXAGON	EA	14
					<b>15</b>			





NOTE: FOR COMPLETE REFERENCE DESIGNATION  
PREFIX WITH A3.

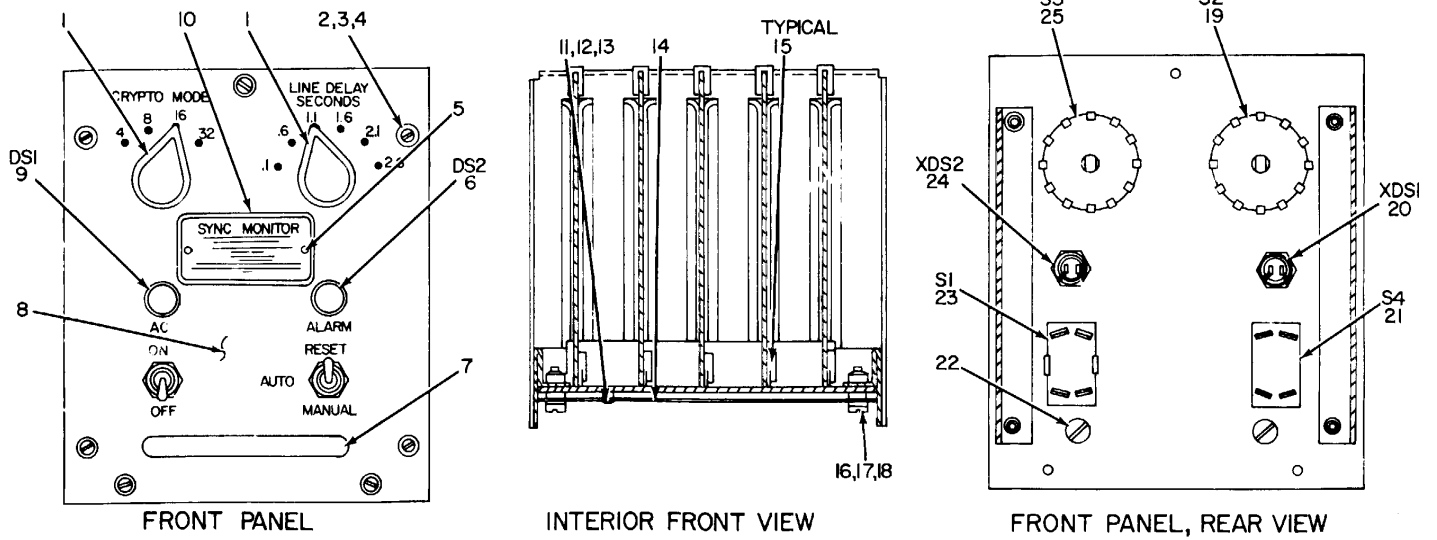
EL4CB007

Figure 4 . Synchronizer-Monitor SN-395/G .

SECTION II

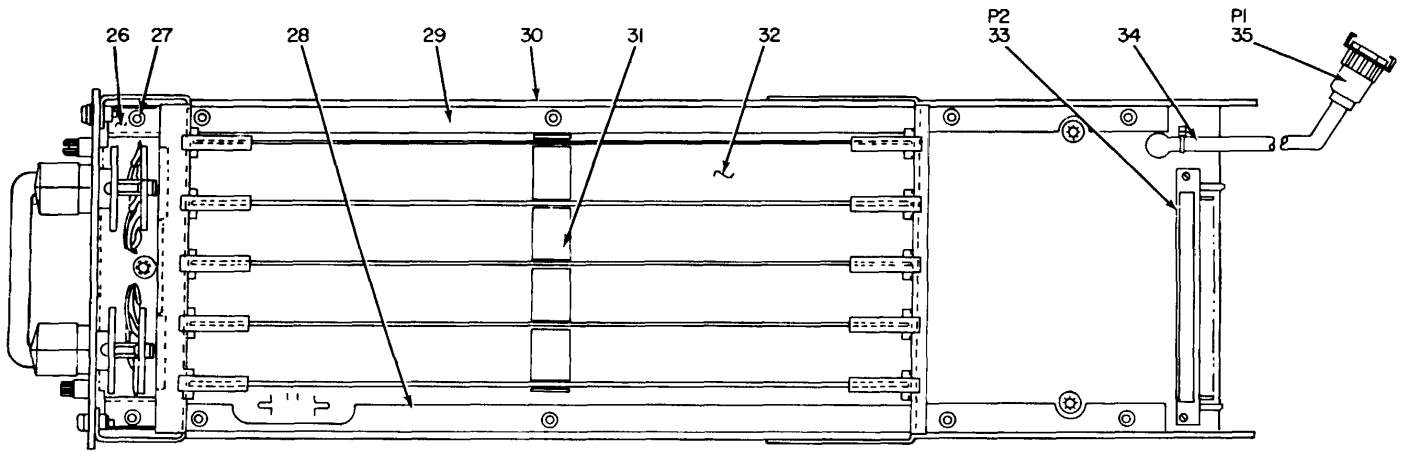
TM11-5895-543-34P/NAVELEX 0967-LP-616-1020/TO 31W1-2G-234-2

(1) ILLUSTRATION		(2)	(3)	(4)	(5)	(6) DESCRIPTION	(7)	(8)
(a) FIG NO.	(b) ITEM NO.	SMR CODE	NATIONAL STOCK NUMBER	PART NUMBER	FSCM	USABLE ON CODE	U/M	QTY INC IN UNIT
						GROUP 02 SYNCHRONIZER-MCNITOR SN-395/G		
4	1	PAODL	5895-00-999-2437	PL-1173/G	80058	ELECTRICAL,SYNC.....	EA	1
4	2	PAODL	5895-00-999-2436	PL-11 74/G	80058	ELECTRICAL SYNC.....	EA	1
4	3	PAODL	5895-00-917-1923	SMD546873	80063	SYNCHRONIZER ASSY .....	EA	1
4	4	PAODL	5895-00-999-2442	PL-11201	80058	ELECTRICAL SYNC.....	EA	1
4	5	PAODL	5895-00-999-2439	PL-111/G	80058	ELECTRICAL SYNC.....	EA	1
4	6	PAODL	5895-00-999-2438	PL-I 12/G	30058	ELECTRICAL SYNC.....	EA	1
<b>17/(18 blank)</b>								



EL4CB008

Figure 5 . Synchronizer-Monitor SN-395/G (Sheet 1 of 2) .



TOP VIEW, COVER REMOVED

ITEM LISTED,BUT NOT SHOWN	
LI	36

EL4CB009

Figure 5 . Synchronizer-Monitor SN-395/G (Sheet 2 of 2) .

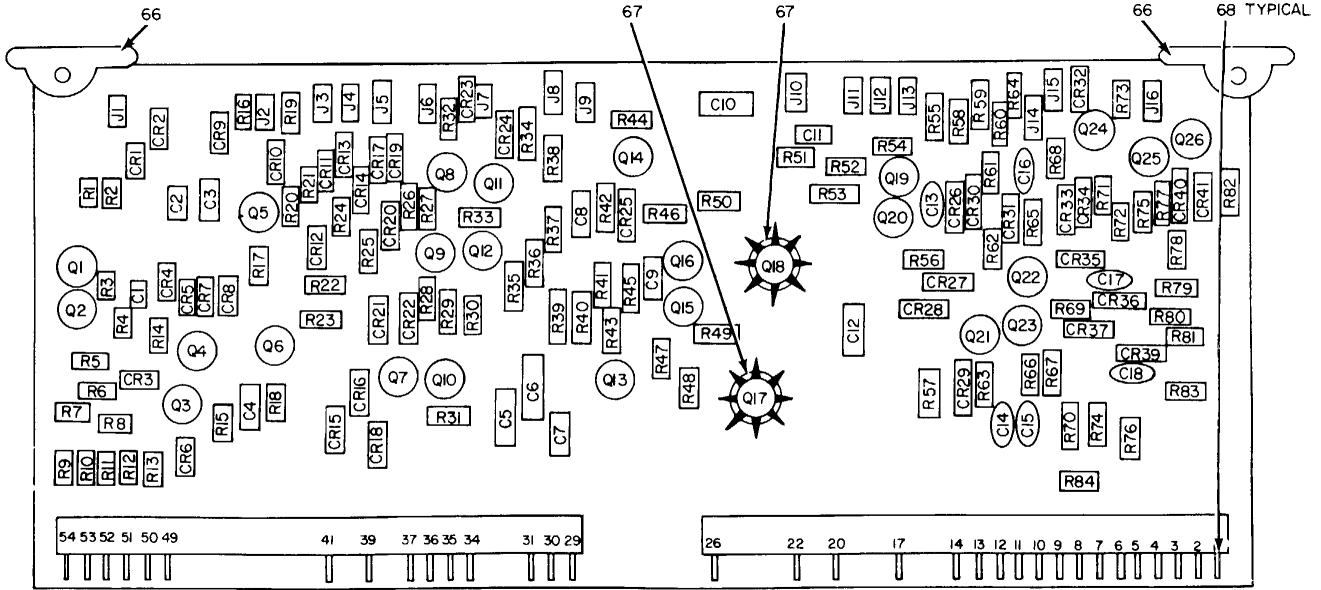
20

SECTION II

TM11-5895-543-34PNAVELEX 0967-LP-616-1020/TO 31W1-2G-234-2

(1) ILLUSTRATION		(2)	(3)	(4)	(5)	(6)	(7)	(8)
(a) FIG NO.	(b) ITEM NO.	SMR CODE	NATIONAL STOCK NUMBER	PART NUMBER	FSCM	DESCRIPTION  USABLE ON CODE	U/M	QTY INC IN UNIT
5	1	PAOZZ	5355-00-559-8943	MS91528-2K28	96906	KNOB .....	EA	2
5	2	PAFZZ	5305-00-984-6193	MS35206-245	96906	SCRE,MACHINE .....	EA	4
5	3	PAFZZ	5310-00-809-8544	MS27183-7	96906	WASHER,FLAT .....	EA	4
5	4	PAFZZ	5310-00-045-3299	MS35338-42	96906	WASHER,LOCK-SPRING .....	EA	4
5	5	PAFZZ	5305-00-253-5603	MS21318-1	96906	SCREW,DRIVE .....	EA	2
5	6	PAOZZ	6240-00-926-7603	380	08806	LAMP,INCANDESCENT .....	EA	1
5	7	PAFZZ	5340-00-060-5957	MS39087-5	96906	HANDLE,BOW .....	EA	1
5	8	XDFZZ		SMD546918	80063	PANEL,FRONT .....	EA	1
5	9	PAOZZ	6240-00-892-4420	MS25252-NE2D	96906	LAMP,GLOW .....	EA	1
5	10	XDFZZ		SMC546896-02	80063	PLATE,IDENT .....	EA	1
5	11	PAFZZ	5305-00-043-6639	MS35225-14	96906	SCREW MACHINE .....	EA	2
5	12	PAFZZ	5310-00-951-4679	MSI5795-203	96906	WASHER,FLAT .....	EA	2
5	13	PAFZZ	5310-00-543-2410	MS35338-40	96906	WASHER,LOCK-SPRING .....	EA	5
5	14	PAFZZ	5935-00-755-2414	MS24018-7	96906	SHIELD,ELEC CONN .....	EA	1
5	15	PAFZZ	5999-00-767-1584	5201-0223	91662	CONTACT,ELECTRICAL .....	EA	167
5	16	PAFZZ	5305-00-889-3000	MS35206-230	96906	SCREW,MACHINE .....	EA	8
5	17	PAFZZ	5310-00-082-1434	M527183-6	96906	WASHER,FLAT .....	EA	8
5	18	PAFZZ	5310-00 045-4007	MS35338-41		WASHER,LOCK-SPRING .....	EA	8
5	19	XDFZZ		SR02N3081MPCI P4T	81349	SWITCH.ROTARY .....	EA	1
5	20	PAFZZ	6219-00-081-3431	MS25257-1	96906	LIGHT,INDICATOR .....	EA	1
5	21	PAFZZ	5930-00-655-1575	M535059-22	96906	SWITCH,TOGGLE .....	EA	1
5	22	PAFZZ	5305-00-984-7363	MS35191-272	96906	SCREW,MACHINE .....	EA	2
5	23	PAFZZ	5930-00-615-7897	MS35059-31	96906	SWITCH.TOGGLE .....	EA	1
5	24	PAFZZ	6713-00-682-9833	MS252526-	96906	LIGHT.INDICATOR .....	EA	1
5	25	XDFZZ		SRO2N30B31PCI P6T	81349	SWITCH,ROTARY .....	EA	1
5	26	XDFZLZ		SC546914	80063	BRACKET.SLIOE MTG .....	EA	1
5	27	PAFZZ	5305-00-984-4989	M535225-29	96906	SCREW,MACHINE .....	EA	2
5	28	XDFZZ		62-5201-4112	91662	GUIDE,CARD,RH .....	EA	1
5	29	XDFZZ		62-5701-4177	91662	GUIDE,CARD LH .....	EA	1
5	30	XDFZZ		SM0546881	80063	WELDMENT.CHASSIS .....	EA	1

5	31	XDFZZ		SMC546952	800631 BLOCK,GUIDE .....	EA	1
5	32	XDFZZ		SM0546917	80063 PARENT BOARD ASSY .....	EA	1
5	33	PAFZZ	5935-00-926-7404	M21097-5-08	96906 CONNFCTOR,RCPT,ELEC.....	EA	1
5	34	XDFFF	SMD546935		80063 CABLE ASSY,PWR SPLY.....	EA	1
5	35	PAFZZ	5999-00-767-1584	MS24055-2	96906 CONNECTOR,RCPT,ELEC.....	EA1	
5	36	PAFZZ	5950-00-903-3387	1025-60	99800 COIL,RF .....	EA	1



EL4CBO10

Figure 6. Electrical Synchronizer Subassembly PL-1120/G (Sheet 1 of 3).

REF. DES.	ITEM NO.	REF. DES.	ITEM NO.	REF. DES.	ITEM NO.	REF. DES.	ITEM NO.	REF. DES.	ITEM NO.	REF. DES.	ITEM NO.
C1	1	CR3	10	CR23	10	J2	13	Q6	18	Q26	18
C2	2	CR4	10	CR24	10	J3	14	Q7	17	R1	19
C3	2	CR5	10	CR25	12	J4	13	Q8	18	R2	20
C4	3	CR6	10	CR26	10	J5	13	Q9	17	R3	21
C5	4	CR7	10	CR27	10	J6	13	Q10	18	R4	22
C6	5	CR8	10	CR28	11	J7	13	Q11	18	R5	22
C7	5	CR9	11	CR29	10	J8	14	Q12	18	R6	22
C8	6	CR10	11	CR30	10	J9	15	Q13	18	R7	23
C9	7	CR11	10	CR31	10	J10	14	Q14	17	R8	24
C10	7	CR12	11	CR32	10	J11	14	Q15	18	R9	25
C11	6	CR13	10	CR33	10	J12	14	Q16	17	R10	26
C12	4	CR14	10	CR34	10	J13	16	Q17	17	R11	27
C13	8	CR15	10	CR35	10	J14	13	Q18	18	R12	28
C14	8	CR16	10	CR36	10	J15	14	Q19	18	R13	29
C15	8	CR17	10	CR37	10	J16	16	Q20	17	R14	24
C16	9	CR18	10	CR38	10	Q1	17	Q21	17	R15	30
C17	8	CR19	10	CR39	10	Q2	18	Q22	18	R16	31
C18	8	CR20	10	CR40	10	Q3	18	Q23	18	R17	32
CR1	10	CR21	10	CR41	10	Q4	18	Q24	17	R18	21
CR2	10	CR22	10	J1	13	Q5	17	Q25	18	R19	33

EL4CB011

Figure 6. Electrical Synchronizer Subassembly PL-1120/G (Sheet 2 of 3).

REF. DES.	ITEM NO.	REF. DES.	ITEM NO.	REF. DES.	ITEM NO.	REF. DES.	ITEM NO.	REF. DES.	ITEM NO.
R20	34	R34	43	R48	34	R62	45	R76	63
R21	35	R35	44	R49	51	R63	48	R77	64
R22	24	R36	45	R50	48	R64	33	R78	48
R23	36	R37	46	R51	52	R65	30	R79	39
R24	31	R38	34	R52	34	R66	58	R80	65
R25	34	R39	47	R53	53	R67	58	R81	47
R26	37	R40	48	R54	50	R68	59	R82	62
R27	38	R41	20	R55	53	R69	47	R83	39
R28	39	R42	49	R56	30	R70	60	R84	24
R29	40	R43	30	R57	54	R71	61		
R30	41	R44	50	R58	55	R72	62		
R31	42	R45	51	R59	56	R73	31		
R32	24	R46	47	R60	46	R74	44		
R33	22	R47	52	R61	57	R75	61		

EL4CBO12

Figure 6. Electrical Synchronizer Subassembly PL-1120/G (Sheet 3 of 3).



## SECTION II

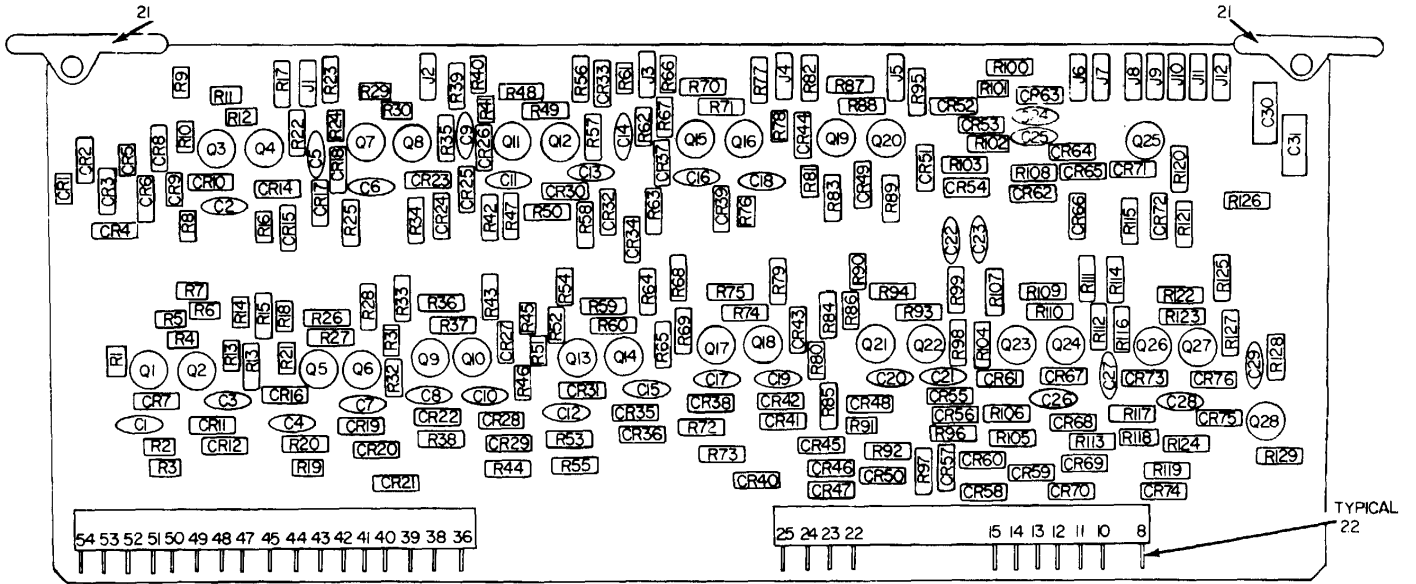
TM11-5895-543-34P/NAVELEX 0967-LP-616-1020/TO 31W-2G-234-2

(1) ILLUSTRATION		(2)	(3)	(4)	(5)	(6) DESCRIPTION	(7)	(8)
(a) FIG NO.	(b) ITEM NO.	SMR CODE	NATIONAL STOCK NUMBER	PART NUMBER	FSCM	USABLE ON CODE	U/M	QTY INC IN UNIT
						GROUP 0201 ELECTRICAL SYNCHRONIZER SUBASSEMBLY PL-1120/G		
6	1	XDDZZ		CS13BE476K	81349	CAPACITOR, ELCTLT	EA	1
6	2	XDDZZ		CL37BG1R5MN3	81349	CAPACITOR,ELCTLT	EA	2
6	3	PADZZ	5910-00-902-2812	CS13BE12K	81349	CAPACITOR,ELCTLT	EA	1
6	4	XDDZZ		CTM823VAK	81349	CAPACITOR,FXD,PLSTC	EA	2
6	5	PADZZ	5910-00-783-9403	CS13BD226K	81349	CAPACITOR,ELCTLT	EA	2
6	6	PADZZ	5910-00-835-2719	CTM223VAK	81349	CAPACITOR,FXD,PLSTC	EA	2
6	7	PADZZ		CS13BB476K	81349	CAPACITOR,ELCTLT	EA	2
6	8	PADZZ	5910-00-838-0869	CK638X332K	81349	CAPACITOR,FXD,CER	EA	5
6	9	PADZZ	5910-00-983-6866	CK61BX471K	81349	CAPACITOR,FXD,CER	EA	1
6	10	PADZZ	5961-00-842-9864	IN914	81349	SEMICONDUCTOR,DIODE	EA	36
6	11	PADZZ	5961-00-865-3448	IN691	81349	SEMICONDUCTOR,DIODE	EA	4
6	12	PADZZ	5961-00-995-2310	IN752A	81349	SEMICONDUCTOR,DIODE	EA	1
6	13	PADZZ	5935-00-933-2804	105-737	74970	JACK,TIP	EA	7
6	14	PADZZ	5935-00-933-2802	105-734	74970	JACK,TIP	EA	6
6	15	PADZZ	5935-00-933-2802	105-733	74970	JACK,TIP	EA	1
6	16	PADZZ	5935-00-933-2803	105-732	74970	JACK,TIP	EA	2
6	17	PADZZ	5961-00-949-1440	JAN2N2905A	81349	TRANSISTOR	EA	10
6	18	PADZZ	5961-00-050-7499	2N2219	81349	TRANSISTOR	EA	16
6	19	PADZZ	5905-00-043-0381	RN60D2211F	81349	RESISTOR,FXD,FILM	EA	1
6	20	PADZZ	5905-00-988-2280	RN60D2001F	81349	RESISTOR,FXD,FILM	EA	2
6	21	PADZZ	5905-00-683-2238	RC07GF103J	81349	RESISTOR,FXD,CMPSN	EA	2
6	22	PADZZ	5905-00-683-2241	RC07GF512J	81349	RESISTOR,FXD,CMPSN	EA	4
6	23	PADZZ	5905-00-807-0059	RC07GF433J	81349	RESISTOR,FXD,CMPSN	EA	1
6	24	PADZZ	5905-00-681-9969	RC07GF332J	81349	RESISTOR,FXD,CMPSN	EA	4
6	25	PADZZ	5905-00-728-6519	RN60D2551F	81349	RESISTOR,FXD,FILM	EA	1
6	26	PADZZ	5905-00-952-6827	RN60D2263F	81349	RESISTOR,FXD,FILM	EA	1
6	27	PADZZ	5905-00-880-7216	RN60D8452F	81349	RESISTOR,FXD,FILM	EA	1
6	28	PADZZ	5905-00-051-8005	RN60D4022F	81349	RESISTOR,FXD,FILM	EA	1
6	29	PADZZ	5905-00-761-1899	RN60D1652F	81349	RESISTOR,FXD,FILM	EA	1
6	30	PADZZ	5905-00-683-7723	RC07GF152J	81349	RESISTOR,FXD,CMPSN	EA	4
6	31	PADZZ	5905-00-682-4097	RC07GF302J	81349	RESISTOR,FXD,CMPSN	EA	3
6	32	PADZZ	5905-00-279-1758	RC20GF750J	81349	RESISTOR,FXD,CMPSN	EA	1
6	33	PADZZ	5905-00-195-6806	RC20GF102J	81349	RESISTOR,FXD,CMPSN	EA	2
6	34	PADZZ	5905-00-681-6462	RC07GF102J	81349	RESISTOR,FXD,CMPSN	EA	5
6	35	PADZZ	5905-00-279-1757	RC20GF152J	81349	RESISTOR,FXD,CMPSN	EA	1
6	36	PADZZ	5905-00-726-4413	RC07GF123J	81349	RESISTOR,FXD,CMPSN	EA	1
6	37	PADZZ	5905-00-686-9998	RC07GF472J	81349	RESISTOR,FXD,CMPSN	EA	1
6	38	PADZZ	5905-00-721-0597	RC07GF243J	81349	RESISTOR,FXD,CMPSN	EA	1

## SECTION II

TM11-5895-543-34P/NAVELEX 0961-LP-616-1020/TO 31W1-2G-234-2

(1) ILLUSTRATION		(2)	(3)	(4)	(5)	(6)	(7)	(8)
(a) FIG NO.	(b) ITEM NO.	SMR CODE	NATIONAL STOCK NUMBER	PART NUMBER	FSCM	DESCRIPTION  USABLE ON CODE	U/M	QTY INC IN UNIT
6	39	PADZZ	5905-00-681-8818	RC07GF153J	81349	RESISTOR,FXD,CMPSN	EA	3
6	40	PADZZ	5905-00-882-0070	RL20S562J	81349	RESISTOR,FXD,FILM	EA	1
6	41	PADZZ	5905-00-767-3223	RL20S362J	81349	RESISTOR,FXD,FILM	EA	1
6	42	PADZZ	5905-00-279-2654	RC32GF820J	81349	RESISTOR,FXD,CMPSN	EA	1
6	43	PADZZ	5905-00-279-2626	RC32GF68J	81349	RESISTOR,FXD,CMPSN	EA	1
6	44	PADZZ	5905-00-767-3213	RL20S302J	81349	RESISTOR,FXD,FILM	EA	2
6	45	PADZZ	5905-00-766-8368	RL20S302J	81349	RESISTOR,FXD, FILM	EA	2
6	46	PADZZ	5905-00-723-5251	RC07GF222J	81349	RESISTOR,FXD,CMPSN	EA	2
6	47	PADZZ	5905-00-807-4954	RC07GF751J	81349	RESISTOR,FXD,CMPSN	EA	4
6	48	PADZZ	5905-00-682-4098	RC07GF392J	81349	RESISTOR,FXD,CMPSN	EA	4
6	49	PADZZ	5905-00-761-1903	RN60D2371F	81349	RESISTOR,FXD,FILM	EA	1
6	50	PADZZ	5905-00-817-7971	RC07GF100J	81349	RESISTOR,FXD,CMPSN	EA	2
6	51	PADZZ	5905-00-682-4104	RC07GF623J	81349	RESISTOR,FXD,CMPSN	EA	2
6	52	PADZZ	5905-00-682-4108	RC07GF241J	81349	RESISTOR,FXD,CMPSN	EA	2
6	53	PADZZ	5905-00-247-8738	RCR32G750JS	81349	RESISTOR,FXD,CMPSN	EA	2
6	54	PADZZ	5905-00-279-2530	RC42GF152J	81349	RESISTOR,FXD,CMPSN	EA	1
6	55	PADZZ	5905-00-801-8272	RC07GF511J	81349	RESISTOR,FXD,CMPSN	EA	1
6	56	PADZZ	5905-00-682-4101	RC07GF752J	81349	RESISTOR,FXD,CMPSN	EA	1
6	57	PADZZ	5905-00-63-4753	RL20S132J	81349	RESISTOR,FXD,FILM	EA	1
6	58	PADZZ	5905-00-111-4845	RCR07G201JS	81349	RESISTOR,FXD,CMPSN	EA	2
6	59	PADZZ	5905-00-682-4100	RC07GF622J	81349	RESISTOR,FXD,CMPSN	EA	1
6	60	PADZZ	5905-00-767-2843	RL20S682J	81349	RESISTOR,FXD,FILM	EA	1
6	61	PADZZ	5905-00-057-9634	RN60D2492F	81349	RESISTOR,FXD,FILM	EA	2
6	62	PADZZ	5905-00-051-8012	RN60D7321F	81349	RESISTOR,FXD,FILM	EA	2
6	63	PADZZ	5905-00-683-7724	RC07GF242J	81349	RESISTOR,FXD,CMPSN	EA	1
6	64	PADZZ	5905-00-686-9996	RC07GF821J	81349	RESISTOR,FXD,CMPSN	EA	1
6	65	PADZZ	5905-00-683-2236	RC7GF391J	81349	RESISTOR,FXD,CMPSN	EA	1
6	66	PADZZ	7440-00-933-2490	S203-100BLUE	18677	CARD EJECTOR	EA	2
6	67	PADZZ		NF209	05820	HEATSINK,ELEC	EA	2
6	68	PADZZ	5999-00-981-9339	5001-1923	91662	CONTACT,ELECTRICAL	EA	33



EL4C8013

Figure 7. Electrical Synchronizer Subassembly PL-1121/G (Sheet 1 of 4).

REF. DES	ITEM NO.	REF. DES	ITEM NO.	REF. DES	ITEM NO.	REF. DES	ITEM NO.	REF. DES	ITEM NO.	REF. DES	ITEM NO.
C1	1	C22	1	CR12	4	CR33	4	CR54	4	CR75	4
C2	1	C23	1	CR13	4	CR34	4	CR55	4	CR76	4
C3	1	C24	1	CR14	4	CR35	4	CR56	4	J1	5
C4	1	C25	1	CR15	4	CR36	4	CR57	4	J2	5
C5	1	C26	1	CR16	4	CR37	4	CR58	4	J3	5
C6	1	C27	1	CR17	4	CR38	4	CR59	4	J4	5
C7	1	C28	1	CR18	4	CR39	4	CR60	4	J5	5
C8	1	C29	1	CR19	4	CR40	4	CR61	4	J6	5
C9	1	C30	3	CR20	4	CR41	4	CR62	4	J7	5
C10	1	C31	3	CR21	4	CR42	4	CR63	4	J8	5
C11	1	CR1	4	CR22	4	CR43	4	CR64	4	J9	5
C12	1	CR2	4	CR23	4	CR44	4	CR65	4	J10	5
C13	1	CR3	4	CR24	4	CR45	4	CR66	4	J11	5
C14	2	CR4	4	CR25	4	CR46	4	CR67	4	J12	5
C15	1	CR5	4	CR26	4	CR47	4	CR68	4	Q1	6
C16	1	CR6	4	CR27	4	CR48	4	CR69	4	Q2	6
C17	1	CR7	4	CR28	4	CR49	4	CR70	4		
C18	1	CR8	4	CR29	4	CR50	4	CR71	4		
C19	1	CR9	4	CR30	4	CR51	4	CR72	4		
C20	1	CR10	4	CR31	4	CR52	4	CR73	4		
C21	1	CR11	4	CR32	4	CR53	4	CR74	4		

EL4CBO14

Figure 7. Electrical Synchronizer Subassembly PL-1121/G (Sheet 2 of 4)

REF. DES.	ITEM NO.	REF. DES.	ITEM NO.	REF. DES.	ITEM NO.	REF. DES.	ITEM NO.	REF. DES.	ITEM NO.	REF. DES.	ITEM NO.
Q3	6	Q23	6	R15	7	R35	7	R55	7	R75	14
Q4	6	Q24	6	R16	11	R36	13	R56	12	R76	11
Q5	6	Q25	6	R17	12	R37	14	R57	7	R77	12
Q6	6	Q26	6	R18	12	R38	7	R58	11	R78	7
Q7	6	Q27	6	R19	11	R39	12	R59	14	R79	10
Q8	6	Q28	6	R20	11	R40	12	R60	14	R80	7
Q9	6	R1	7	R21	7	R41	7	R61	7	R81	7
Q10	6	R2	8	R22	7	R42	11	R62	7	R82	12
Q11	6	R3	8	R23	12	R43	10	R63	11	R83	11
Q12	6	R4	9	R24	7	R44	7	R64	10	R84	7
Q13	6	R5	9	R25	11	R45	7	R65	7	R85	7
Q14	6	R6	10	R26	10	R46	7	R66	12	R86	7
Q15	6	R7	10	R27	10	R47	7	R67	7	R87	10
Q16	6	R8	11	R28	12	R48	10	R68	10	R88	10
Q17	6	R9	12	R29	10	R49	10	R69	7	R89	11
Q18	6	R10	7	R30	10	R50	7	R70	10	R90	10
Q19	6	R11	10	R31	7	R51	7	R71	10	R91	7
Q20	6	R12	10	R32	7	R52	7	R72	7	R92	15
Q21	6	R13	7	R33	10	R53	7	R73	7	R93	14
Q22	6	R14	7	R34	11	R54	10	R74	14	R94	14

Figure 7. Electrical Synchronizer Subassembly PL-1121/G (Sheet 3 of 4).

REF. DES.	ITEM NO.	REF. DES.	ITEM NO.	REF. DES.	ITEM NO.	REF. DES.	ITEM NO.
R95	12	R104	7	R113	16	R122	14
R96	7	R105	7	R114	10	R123	14
R97	15	R106	7	R115	13	R124	19
R98	7	R107	10	R116	17	R125	10
R99	10	R108	7	R117	7	R126	20
R100	7	R109	14	R118	7	R127	17
R101	7	R110	14	R119	15	R128	10
R102	7	R111	10	R120	18	R129	10
R103	7	R112	7	R121	14		

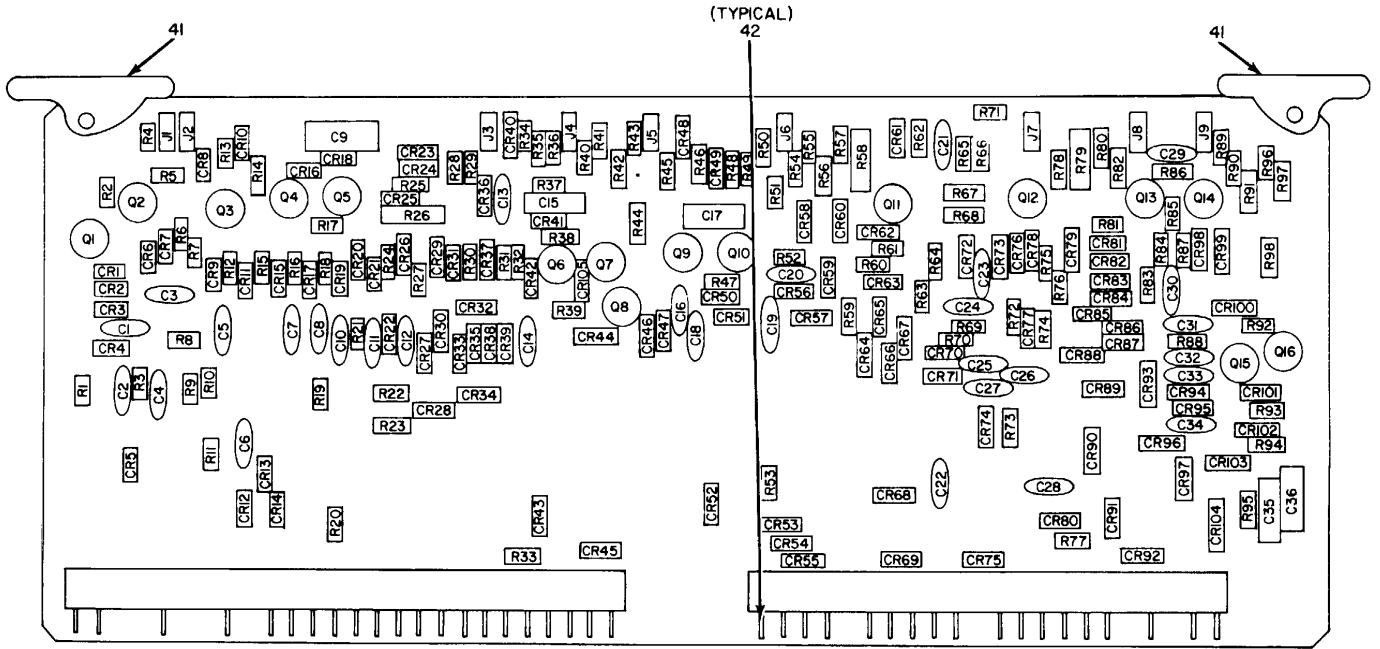
EL4CB016

Figure 7. Electrical Synchronizer Subassembly PL-1121/G (Sheet 4 of 4).

## SECTION II

TM11-5895-543-34P/NAVELEX 0967-LP-616-1020/TO 31W1-2G-234-2

(1) ILLUSTRATION		(2)	(3)	(4)	(5)	(6)	(7)	(8)
(a) FIG NO.	(b) ITEM NO.	SMR CODE	NATIONAL STOCK NUMBER	PART NUMBER	FSCM	DESCRIPTION  USABLE ON CODE	U/M	QTY INC IN UNIT
						GROUP 0202 ELECTRICAL SYNCHRONIZER SUBASSEMBLY PL-1121/G		
7	1	PADZZ	5910-00-983-6866	CK61BX471K	81349	CAPACITOR,FXD,CER	EA	28
7	2	PADZZ	5910-00-881-0800	CK62BX152K	81349	CAPACITOR,FXD,CER	EA	1
7	3	PADZZ	5910-00-783-9403	CS13BD226K	81349	CAPACITOR,FXD,ELCLTL	EA	2
7	4	PADZZ	5961-00-842-9864	IN914	81349	SEMICONDUCTOR,DIODE	EA	76
7	5	PADZZ	5935-00-933-2804	105-737	74970	JACK,TIP	EA	12
7	6	PADZZ	5961-00-050-7499	2N2219	81349	TRANSISTOR,SILIOON	EA	28
7	7	PADZZ	5905-00-682-4104	RC07GF623J	81349	RESISTOR,FXD,CMPSN	EA	50
7	8	PADZZ	5905-00-721-0597	RC7GF243J	81349	RESISTOR,FXD,CMPSN	EA	2
7	9	PADZZ	5905-00-682-4097	RC07GF302J	81349	RESISTOR,FXD,CMPSN	EA	2
7	10	PADZZ	5905-00-682-4098	RC07GF392J	81349	RESISTOR,FXD,CMPSN	EA	28
7	11	PADZZ	5905-00-686-3903	RC07GF333J	81349	RESISTOR,FXD,CMPSN	EA	12
7	12	PADZZ	5905-00-190-8880	RC20GF122J	81349	RESISTOR,FXD,CMPSN	EA	12
7	13	PADZZ	5905-00-683-2241	RC07GF512J	81349	RESISTOR,FXD,CMPSN	EA	2
7	14	PADZZ	5905-00-682-4101	RC07GF752J	81349	RESISTOR,FXD,CMPSN	EA	12
7	15	PADZZ	5905-00-686-3370	RC07GF202J	81349	RESISTOR,FXD,CMPSN	EA	3
7	16	PADZZ	5905-00-767-3219	RL20S202J	81349	RESISTOR,FXD,FILM	EA	1
7	17	PADZZ	5905-00-807-0059	RC7GF433J	81349	RESISTOR,FXD,CMPSN	EA	2
7	18	PADZZ	5905-00-767-2843	RL20S682J	81349	RESISTOR,FXD,FILM	EA	1
7	19	PADZZ	5905-00-766-8369	RL20S12J	81349	RESISTOR,FXD,FILM	EA	1
7	20	PADZZ	5905-00-766-8363	RL20S333J	81349	RESISTOR,FXD,FILM	EA	1
7	21	PADZZ	7040-00-917-0705	S203-100WHITE	81349	CARD,EJECTOR	EA	2
7	22	PADZZ	5999-00-981-9339	5001-1923	81349	CONTACT,ELECTRICAL	EA	28
					<b>31</b>			



EL4C8017

Figure 8. Electrical Synchronizer Subassembly PL-1122/G (Sheet 1 of 3).



REF. DES.	ITEM NO.	REF. DES.	ITEM NO.	REF. DES.	ITEM NO.	REF. DES.	ITEM NO.	REF. DES.	ITEM NO.	REF. DES.	ITEM NO.	REF. DES.	ITEM NO.	REF. DES.	ITEM NO.
C1	1	C19	2	CR1	8	CR19	8	CR37	8	CR55	9	CR73	8	CR91	8
C2	1	C20	2	CR2	8	CR20	8	CR38	8	CR56	8	CR74	8	CR92	8
C3	1	C21	2	CR3	8	CR21	8	CR39	8	CR57	8	CR75	8	CR93	8
C4	2	C22	1	CR4	8	CR22	8	CR40	8	CR58	8	CR76	8	CR94	8
C5	2	C23	1	CR5	8	CR23	8	CR41	8	CR59	8	CR77	8	CR95	8
C6	2	C24	2	CR6	8	CR24	8	CR42	8	CR60	8	CR78	8	CR96	8
C7	2	C25	2	CR7	8	CR25	8	CR43	8	CR61	8	CR79	8	CR97	8
C8	2	C26	1	CR8	8	CR26	8	CR44	8	CR62	8	CR80	8	CR98	8
C9	3	C27	2	CR9	8	CR27	8	CR45	8	CR63	8	CR81	8	CR99	8
C10	1	C28	2	CR10	8	CR28	8	CR46	8	CR64	8	CR82	8	CR100	8
C11	2	C29	6	CR11	8	CR29	8	CR47	8	CR65	8	CR83	8	CR101	8
C12	2	C30	2	CR12	8	CR30	8	CR48	8	CR66	8	CR84	8	CR102	8
C13	2	C31	2	CR13	8	CR31	8	CR49	8	CR67	8	CR85	8	CR103	8
C14	2	C32	1	CR14	8	CR32	8	CR50	8	CR68	8	CR86	8	CR104	8
C15	4	C33	1	CR15	8	CR33	8	CR51	8	CR69	9	CR87	8	CR105	8
C16	2	C34	1	CR16	8	CR34	8	CR52	9	CR70	8	CR88	8		
C17	5	C35	7	CR17	8	CR35	8	CR53	9	CR71	8	CR89	8		
C18	2	C36	7	CR18	8	CR36	8	CR54	9	CR72	8	CR90	8		

EL4CB018

Figure 8. Electrical Synchronizer Subassembly PL-1122/G (Sheet 2 of 3)

REF. DES.	ITEM NO.	REF. DES.	ITEM NO.	REF. DES.	ITEM NO.	REF. DES.	ITEM NO.	REF. DES.	ITEM NO.	REF. DES.	ITEM NO.	REF. DES.	ITEM NO.
J1	10	Q10	12	R12	15	R30	15	R48	15	R66	15	R84	15
J2	10	Q11	12	R13	13	R31	15	R49	15	R67	31	R85	14
J3	10	Q12	12	R14	16	R32	15	R50	24	R68	32	R86	26
J4	10	Q13	12	R15	15	R33	15	R51	28	R69	15	R87	15
J5	10	Q14	12	R16	15	R34	15	R52	18	R70	15	R88	15
J6	10	Q15	12	R17	17	R35	22	R53	18	R71	15	R89	17
J7	10	Q16	12	R18	15	R36	23	R54	15	R72	18	R90	35
J8	10	R1	13	R19	13	R37	13	R55	15	R73	15	R91	36
J9	10	R2	14	R20	18	R38	23	R56	29	R74	33	R92	14
Q1	11	R3	15	R21	15	R39	15	R57	13	R75	33	R93	15
Q2	11	R4	13	R22	14	R40	15	R58	30	R76	18	R94	37
Q3	11	R5	14	R23	15	R41	24	R59	15	R77	15	R95	35
Q4	11	R6	15	R24	13	R42	25	R60	18	R78	26	R96	38
Q5	12	R7	15	R25	19	R43	17	R61	15	R79	34	R97	39
Q6	12	R8	15	R26	20	R44	26	R62	15	R80	24	R98	40
Q7	12	R9	13	R27	15	R45	13	R63	15	R81	15		
Q8	12	R10	15	R28	21	R46	27	R64	15	R82	25		
Q9	11	R11	15	R29	15	R47	13	R65	15	R83	15		

EL4CB019

Figure 8. Electrical Synchronizer Subassembly PL-1122/G (Sheet 3 of 3)

## SECTION II

TM11-5895-543-34P/NAVELEX 0967-LP-616-1020/TO 31W1-2G-234-2

(1) ILLUSTRATION		(2)	(3)	(4)	(5)	(6)	(7)	(8)
(a) FIG NO.	(b) ITEM NO.	SMR CODE	NATIONAL STOCK NUMBER	PART NUMBER	FSCM	DESCRIPTION  USABLE ON CODE	U/M	QTY INC IN UNIT
						GROUP 0203 ELECTRICAL SYNCHRONIZER SUBASSEMBLY PL-1122/G		
8	1	PADZZ	5910-00-838-0869	CK638X332K	81349	CAPACITOR,FXD,CER	EA	10
8	2	PADZZ	5910-00-884-0800	CK62B152K	81349	CAPACITOR,FXD,CER	EA	20
8	3	PADZZ	5910-00-156-7293	SCM686GP015B4	81349	CAPACITOR,ELCTLT	EA	1
8	4	PADZZ	5910-00-905-4097	CS13BC396K	81349	CAPACITOR,ELCTLT	EA	1
8	5	PADZZ	5910-00-902-2812	CS13B126K	81349	CAPACITOR,ELCTLT	EA	1
8	6	PADZZ	5910-00-822-8214	CK60BX470K	81349	CAPACITOR,FXD,CER	EA	1
8	7	PADZZ	5910-00-783-9403	CS13BD226K	81349	CAPACITOR,ELCTLT	EA	2
8	8	PADZZ	5961-00-842-9864	IN914	81349	SEMICONDUCTOR,DIODE	EA	100
8	9	PADZZ	5921-00-865-3448	IN691	81349	SEMICONDUCTOR,DIODE	EA	5
8	10	PADZZ	5935-00-933-2804	105-737	74970	JACK,TIP	EA	9
8	11	PADZZ	5961-00-949-1440	JAN2N2905A	81349	TRANSISTOR	EA	5
8	12	PADZZ	5961-00-050-7499	2N2219	813749	TRANSISTOR	EA	11
8	13	PADZZ	5905-00-682-4101	RC07GF752J	813749	RESISTOR,FXD,CMPSN	EA	10
8	14	PADZZ	5905-00-682-4097	RC07GF302J	81349	RESISTOR,FXD,CMPSN	EA	5
8	15	PADZZ	5905-00-682-4104	RC07GF623J	81349	RESISTOR,FXD,CMPSN	EA	43
8	16	PADZZ	5905-00-078-8365	RN60D5112F	81349	RESISTOR,FXD,FILM	EA	1
8	17	PADZZ	5905-00-683-2241	RC07GF512J	81349	RESISTOR,FXD,CMPSN	EA	3
8	18	PADZZ	5905-00-681-8818	RC07GF153J	81349	RESISTOR,FXD,CMPSN	EA	6
8	19	PADZZ	5905-00-686-3122	RC07GF301J	81349	RESISTOR,FXD,CMPSN	EA	1
8	20	PADZZ	5905-00-279-2626	RC32GF681J	81349	RESISTOR,FXD,CMPSN	EA	1
8	21	PADZZ	5905-00-682-4100	RC07GF622J	81349	RESISTOR,FXD,CMPSN	EA	1
8	22	PADZZ	5905-00-110-7622	RCR07G682JS	81349	RESISTOR,FXD,CMPSN	EA	1
8	23	PADZZ	5905-00-682-4098	RC07GF392J	81349	RESISTOR,FXD,CMPSN	EA	2
8	24	PADZZ	5905-00-279-1757	RC20GF152J	81349	RESISTOR,FXD,CMPSN	EA	3
8	25	PADZZ	5905-00-766-8363	RL20S333J	81349	RESISTOR,FXD,FILM	EA	2
8	26	PADZZ	5905-00-767-2843	RL20S682J	81349	RESISTOR,FXD,FILM	EA	3
8	27	PADZZ	5905-00-279-1751	RC20GF302J	81349	RESISTOR,FXD,CMPSN	EA	1
8	28	PADZZ	5905-00-681-6462	RC07GF102J	81349	RESISTOR,FXD,CMPSN	EA	1
8	29	PADZZ	5905-00-882-0070	RL20S562J	81349	RESISTOR,FXD,FILM	EA	1
8	30	PADZZ	5905-00-279-2555	RG32GF911J	81349	RESISTOR,FXD,CMPSN	EA	1
8	31	PADZZ	5905-00-061-2415	RL20S112J	81349	RESISTOR,FXD, FILM	EA	1
8	32	PADZZ	5905-00-063-4753	RL20S132J	81349	RESISTOR,FXD, FILM	EA	1
8	33	PADZZ	5905-00-686-3903	RC07GF333J	81349	RESISTOR,FXD,CMPSN	EA	2
8	34	PADZZ	5905-00-279-2629	RC32GF6211	81349	RESISTOR,FXD,CMPSN	EA	1
8	35	PADZZ	5905-00-721-0597	RC07GF243J	81349	RESISTOR,FXD,CMPSN	EA	2
8	36	PADZZ	5905-00-762-3667	RL20S103J	81349	RESISTOR,FXD,FILM	EA	1
8	37	PADZZ	5905-00-681-9969	RC07GF332J	81349	RESISTOP,FXD,CMPSN	EA	1
8	38	PADZZ	5905-00-723-5251	RC07GF222J	81349	RESISTOR,FXD,CMPSN	EA	1

SECTION II

TM11-5895-543-34P/NAVELEX 0967-LP-616-1020/TO 31W1-2G-234-2

(1) ILLUSTRATION		(2)	(3)	(4)	(5)	(6)	(7)	(8)
(a) FIG NO.	(b) ITEM NO.	SMR CODE	NATIONAL STOCK NUMBER	PART NUMBER	FSCM	DESCRIPTION  USABLE ON CODE	U/M UNIT	QTY INC IN
8	39	PADZZ	5905-00-190-8880	RC20GF122J	81349	RESISTOR,FXD,CMPSN	EA	1
8	40	PADZZ	5905-00-767-3219	RL20S202J	81349	RESISTOR,FXD,FILM	EA	1
8	41	PADZZ	7040-00-917-0702	S203-100PURPLE	18677	CARD EHECTOR	EA	2
8	42	PADZZ	5999-00-981-9339	5001-1923	91662	CONTACT, ELECTRICAL	EA	39
36/(37 blank)								

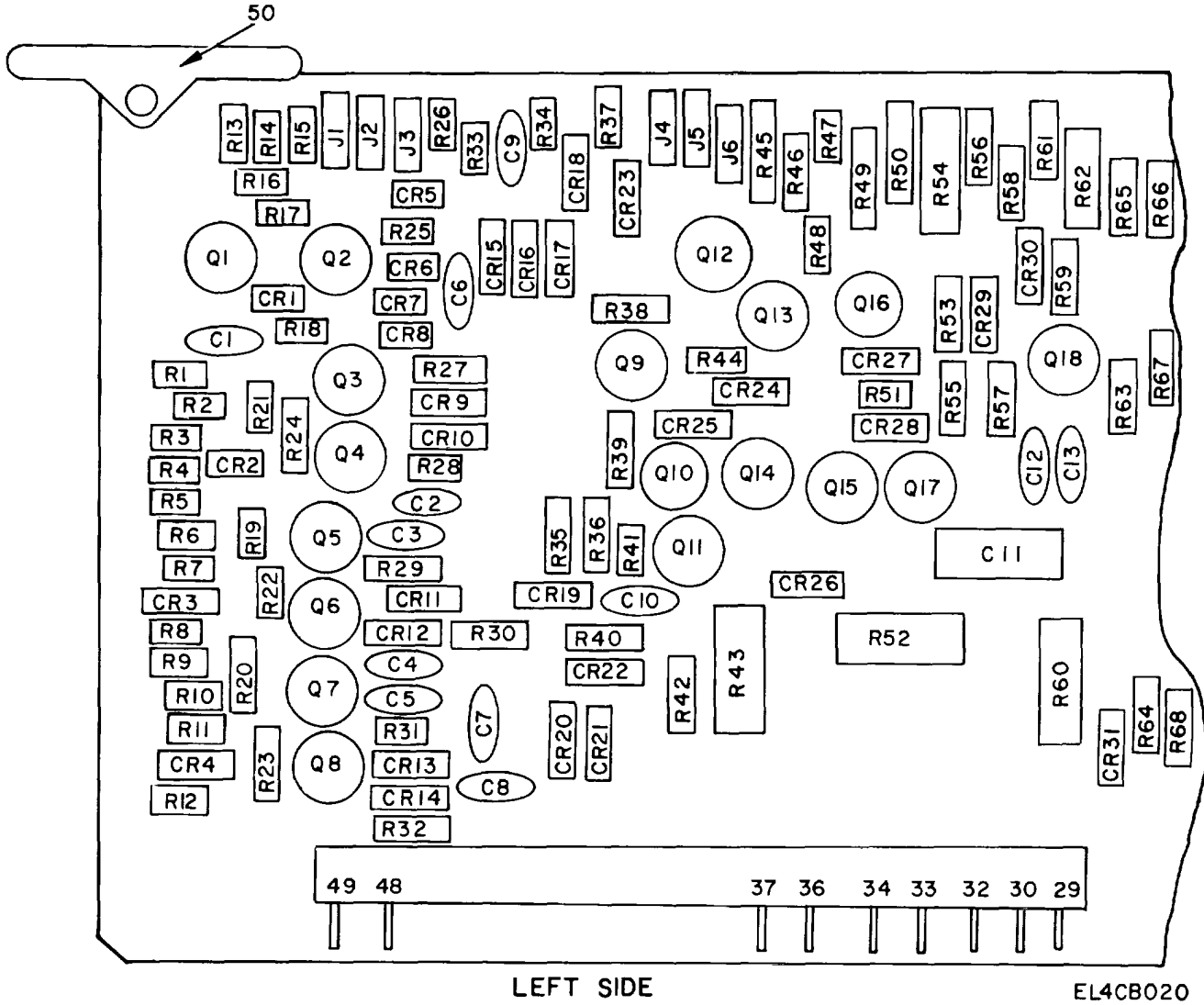


Figure 9. Electrical Synchronizer Subassembly PL-1123/G (Sheet 1 of 5)

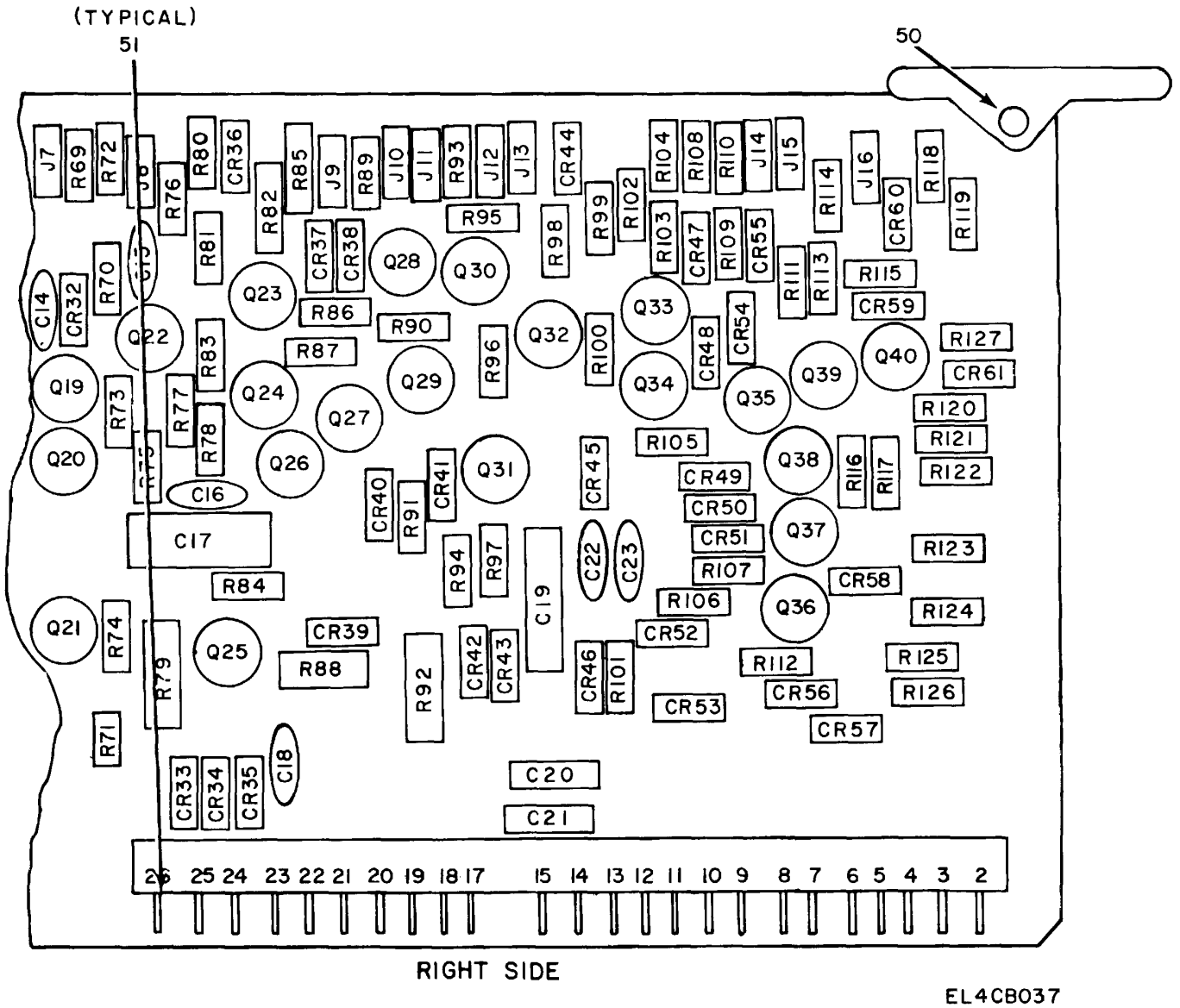


Figure 9. Electrical Synchronizer Subassembly PL-1123/G (Sheet 2 of 5)

REF DES.	ITEM NO.	REF DES.	ITEM NO.	REF DES.	ITEM NO.	REF DES.	ITEM NO.	REF DES.	ITEM NO.	REF DES.	ITEM NO.
C1	1	C21	5	CR18	6	CR38	6	CR58	6	Q1	9
C2	1	C22	1	CR19	6	CR39	6	CR59	6	Q2	9
C3	1	C23	1	CR20	6	CR40	6	CR60	6	Q3	9
C4	1	CR1	6	CR21	6	CR41	6	CR61	6	Q4	9
C5	1	CR2	6	CR22	6	CR42	6	J1	7	Q5	9
C6	1	CR3	6	CR23	6	CR43	6	J2	7	Q6	9
C7	1	CR4	6	CR24	6	CR44	6	J3	7	Q7	9
C8	1	CR5	6	CR25	6	CR45	6	J4	7	Q8	9
C9	2	CR6	6	CR26	6	CR46	6	J5	7	Q9	9
C10	3	CR7	6	CR27	6	CR47	6	J6	8	Q10	10
C11	4	CR8	6	CR28	6	CR48	6	J7	8	Q11	9
C12	2	CR9	6	CR29	6	CR49	6	J8	7	Q12	9
C13	2	CR10	6	CR30	6	CR50	6	J9	8	Q13	10
C14	1	CR11	6	CR31	6	CR51	6	J10	8	Q14	10
C15	1	CR12	6	CR32	6	CR52	6	J11	7	Q15	9
C16	2	CR13	6	CR33	6	CR53	6	J12	7	Q16	10
C17	4	CR14	6	CR34	6	CR54	6	J13	7	Q17	10
C18	1	CR15	6	CR35	6	CR55	6	J14	8	Q18	9
C19	4	CR16	6	CR36	6	CR56	6	J15	8	Q19	9
C20	5	CR17	6	CR37	6	CR57	6	J16	7	Q20	9

EL4C802I

Figure 9. Electrical Synchronizer Subassembly PL-1123/G (Sheet 3 of 5).

REF. DES.	ITEM NO.	REF. DES.	ITEM NO.	REF. DES.	ITEM NO.	REF. DES.	ITEM NO.	REF. DES.	ITEM NO.	REF. DES.	ITEM NO.
Q21	9	R1	11	R21	14	R41	22	R61	31	R81	41
Q22	10	R2	12	R22	14	R42	23	R62	25	R82	25
Q23	10	R3	12	R23	14	R43	24	R63	30	R83	42
Q24	9	R4	11	R24	14	R44	16	R64	32	R84	20
Q25	10	R5	11	R25	12	R45	25	R65	21	R85	25
Q26	10	R6	12	R26	13	R46	23	R66	33	R86	40
Q27	9	R7	12	R27	12	R47	20	R67	34	R87	43
Q28	9	R8	11	R28	12	R48	26	R68	35	R88	44
Q29	9	R9	11	R29	12	R49	25	R69	36	R89	11
Q30	9	R10	12	R30	12	R50	25	R70	11	R90	45
Q31	10	R11	12	R31	15	R51	16	R71	37	R91	16
Q32	10	R12	11	R32	15	R52	27	R72	20	R92	28
Q33	9	R13	13	R33	16	R53	20	R73	38	R93	18
Q34	9	R14	12	R34	14	R54	28	R74	37	R94	26
Q35	9	R15	12	R35	14	R55	29	R75	39	R95	42
Q36	9	R16	14	R36	17	R56	30	R76	40	R96	43
Q37	9	R17	14	R37	18	R57	30	R77	39	R97	20
Q38	9	R18	12	R38	19	R58	12	R78	38	R98	40
Q39	9	R19	14	R39	20	R59	14	R79	24	R99	41
Q40	10	R20	14	R40	21	R60	28	R80	26	R100	43

EL4CB022

Figure 9. Electrical Synchronizer Subassembly  
 PL-1123/G (Sheet 4 of 5).



SECTION II

TM 11-5895-543-34P/NAVELEX 0967-LP-616-1020/TO 31W1-2G-234-2

(1) ILLUSTRATION		(2)	(3)	(4)	(5)	(6)	(7)	(8)
(a) FIG NO.	(b) ITEM NO.	SMR CODE	NATIONAL STOCK NUMBER	PART NUMBER	FSCM	DESCRIPTION  USABLE ON CODE	U/M	QTY INC IN UNIT
						Group 0204 ELECTRICAL SYNCHRONIZER SUBASSEMBLY PL-1123/G		
9	1	PADZZ	5910-00-983-6866	CK61BX471K	81349	CAPACITOR,FXD,CER .....	EA	13
9	2	PADZZ	5910-00-838-0869	CK63BX332K	81349	CAPACITOR,FXD,CER .....	EA	4
9	3	PADZZ	5910-00-822-8214	CTM82VAK	81349	CAPACITOR,FXD,CER .....	EA	1
9	4	XDDZZ		CTM823VAK	81349	CAPACITOR,FXD,PLSTC .....	EA	3
9	5	PADZZ	5910-00-783-9403	CS13BD226K	81349	CAPACITOR,ELCTLT .....	EA	2
9	6	PADZZ	5961-00-842-9864	1N914	81349	SEMICONDUCTOR,DIODE .....	EA	61
9	7	PADZZ	5935-00-933-2803	105-737	74970	JACK,TIP .....	EA	10
9	8	PADZZ	5935-00-933-2803	105-732	74970	JACK,TIP .....	EA	6
9	9	PADZZ	5961-00-050-7499	2N2219	81349	TRANSISTOR.....	EA	28
9	10	PADZZ	5961-00-949-1440	JAN2N2905A	81349	TRANSISTOR.....	EA	12
9	11	PADZZ	5905-00-682-4098	RCO7GF392J	81349	RESISTOR,FXD,CMPSN .....	EA	12
9	12	PADZZ	5905-00-682-4104	RCO7GF623J	81349	RESISTOR,FXD,CMPSN .....	EA	15
9	13	PADZZ	5905-00-686-3370	RCO7GF202J	81349	RESISTOR,FXD,CMPSN .....	EA	2
9	14	PADZZ	5905-00-682-4101	RCO7GF752	81349	RESISTOR,FXD,CMPSN .....	EA	12
9	15	PADZZ	5905-00-807-0059	RCO7GF152J	81349	RESISTOR,FXD,CMPSN .....	EA	4
9	16	PADZZ	5905-00-683-7723	RCO7GF512J	81349	RESISTOR,FXD,CMPSN .....	EA	4
9	17	PADZZ	5905-00-683-2241	RCO7GF562J	81349	RESISTOR,FXD,CMPSN .....	EA	1
9	18	PADZZ	5905-00-691-0195	RL20S562J	81349	RESISTOR,FXD,CMPSN .....	EA	2
9	19	PADZZ	5905-00-882-0070	RCO7GF102J	81349	RESISTOR,FILM .....	EA	1
9	20	PADZZ	5905-00-681-6462	RCO7GF102J	81349	RESISTOR,FXD,CMPSN .....	EA	6
9	21	PADZZ	5905-00-767-2843	RL20S682J	81349	RESISTOR,FILM .....	EA	4
9	22	PADZZ	5905-00-683-7724	RCO7GF242J	81349	RESISTOR,FXD,CMPSN .....	EA	1
9	23	PADZZ	5905-00-766-8363	RL20S333J	81349	RESISTOR,FILM .....	EA	4
9	24	PADZZ	5905-00-256-3361	RC42GF102J	81349	RESISTOR,FXD,CMPSN .....	EA	2
9	25	PADZZ	5905-00-247-8738	RCR32G750JS	81349	RESISTOR,FXD,CMPSN .....	EA	5
9	26	PADZZ	5905-00-682-4097	RCO7GF302J	81349	RESISTOR,FXD,CMPSN .....	EA	1
9	27	PADZZ	5905-00-253-1231	RC42GF391J	81349	RESISTOR,FXD,CMPSN .....	EA	3
9	28	PADZZ	5905-00-279-2530	RC42GF152J	81349	RESISTOR,FXD,CMPSN .....	EA	1
9	29	PADZZ	5905-00-681-9969	RCO7GF332J	81349	RESISTOR,FXD,CMPSN .....	EA	3
9	30	PADZZ	5905-00-767-3220	RL20S222J	81349	RESISTOR,FILM .....	EA	1
9	31	PADZZ	5905-00-279-1757	RC20GF152J	81349	RESISTOR,FILM .....	EA	1
9	32	PADZZ	5905-00-774-8125	RL20S183J	81349	RESISTOR,FILM .....	EA	1
9	33	PADZZ	5905-00-767-3205	RL20S822J	81349	RESISTOR,FILM .....	EA	3
9	34	PADZZ	5905-00-063-4753	RL20S132J	81349	RESISTOR,FILM .....	EA	1
9	35	PADZZ	5905-00-767-3223	RL20S362J	81349	RESISTOR,FILM .....	EA	1
9	36	PADZZ	5905-00-195-6806	RC20GF102J	81349	RESISTOR,FXD,CMPSN .....	EA	1
9	37	PADZZ	5905-00-686-3798	RCO7GF272J	81349	RESISTOR,FXD,CMPSN .....	EA	2
9	38	PADZZ	5905-00-686-3122	RCO7GF301J	81349	RESISTOR,FXD,CMPSN .....	EA	2
					<b>43</b>			

SECTION II

TM 11-5895-543-34P/NAVELEX 0967-LP-616-1020/TO 31W1-2G-234-2

(1) ILLUSTRATION		(2)	(3)	(4)	(5)	(6)	(7)	(8)
(a) FIG NO.	(b) ITEM NO.	SMR CODE	NATIONAL STOCK NUMBER	PART NUMBER	FSCM	DESCRIPTION  USABLE ON CODE	U/M	QTY INC IN UNIT
9	39	PADZZ	5905-00-721-0597	RCO7GF243J	81349	RESISTOR,FXD,CMPSN .....	EA	2
9	40	PADZZ	5905-00-097-9634	RN60D249F	81349	RESISTOR,FXD,FILM.....	EA	5
9	41	PADZZ	5905-00-682-4100	RCO7GF622J	81349	RESISTOR,FXD,CMPSN .....	EA	3
9	42	PADZZ	5905-00-683-2238	RCO7GF103J	81349	RESISTOR,FXD,CMPSN .....	EA	2
9	43	PADZZ	5905-00-051-8012	RN60D7321F	81349	RESISTOR,FXD,FILM.....	EA	6
9	44	PADZZ	5905-00-299-2050	RC32GF751J	81349	RESISTOR,FXD,CMPSN .....	EA	1
9	45	PADZZ	5905-00-686-9996	RCO7GF821J	81349	RESISTOR,FXD,CMPSN .....	EA	3
9	46	PADZZ	5905-00-249-4195	RC20GF752J	81349	RESISTOR,FXD,CMPSN .....	EA	2
9	47	PADZZ	5905-00-249-3656	RC20GF623J	81349	RESISTOR,FXD,CMPSN .....	EA	1
9	48	PADZZ	5905-00-279-3505	RC20GF392J	81349	RESISTOR,FXD,CMPSN .....	EA	1
9	49	PADZZ	5905-00-185-8510	RC20GF103J	81349	RESISTOR,FXD,CMPSN .....	EA	1
9	50	PADZZ	7040-00-917-0724	S203-100YELLOW	18677	CARD EJECTOR.....	EA	2
9	51	PADZZ	5999-00-981-9339	5001-1923	91662	CONTACT,ELECTRICAL .....	EA	33
<b>44/(45 BLANK)</b>								

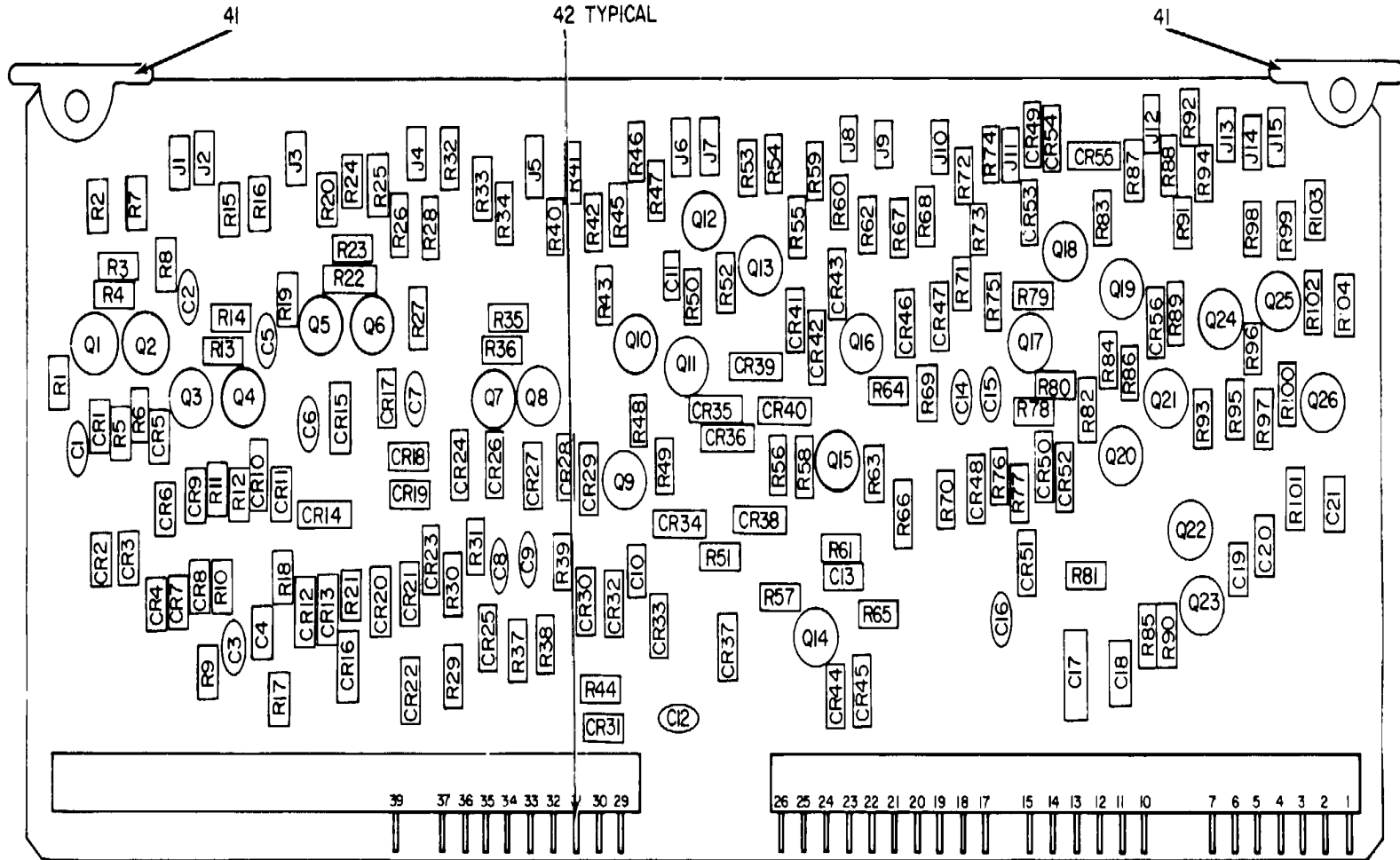


Figure 10. Electrical Synchronizer Subassembly PL-1124/G (Sheet 1 of 3).

EL4CB024

REF. DES.	ITEM NO.	REF. DES.	ITEM NO.	REF. DES.	ITEM NO.	REF. DES.	ITEM NO.	REF. DES.	ITEM NO.	REF. DES.	ITEM NO.
C1	1	C21	3	CR20	6	CR40	6	J4	8	Q9	11
C2	1	CR1	6	CR21	6	CR41	6	J5	9	Q10	10
C3	1	CR2	6	CR22	6	CR42	6	J6	9	Q11	11
C4	1	CR3	6	CR23	6	CR43	6	J7	9	Q12	11
C5	2	CR4	6	CR24	6	CR44	6	J8	9	Q13	10
C6	1	CR5	6	CR25	6	CR45	6	J9	8	Q14	10
C7	1	CR6	6	CR26	6	CR46	7	J10	8	Q15	11
C8	1	CR7	6	CR27	6	CR47	6	J11	9	Q16	11
C9	1	CR8	6	CR28	6	CR48	6	J12	8	Q17	10
C10	3	CR9	6	CR29	6	CR49	6	J13	9	Q18	10
C11	3	CR10	6	CR30	6	CR50	6	J14	8	Q19	10
C12	4	CR11	6	CR31	6	CR51	6	J15	9	Q20	10
C13	3	CR12	6	CR32	6	CR52	7	Q1	10	Q21	10
C14	4	CR13	6	CR33	6	CR53	6	Q2	10	Q22	10
C15	4	CR14	6	CR34	6	CR54	6	Q3	10	Q23	10
C16	4	CR15	6	CR35	6	CR55	6	Q4	10	Q24	10
C17	5	CR16	6	CR36	6	CR56	6	Q5	10	Q25	10
C18	5	CR17	6	CR37	6	J1	8	Q6	10	Q26	10
C19	3	CR18	6	CR38	6	J2	8	Q7	10	R1	12
C20	3	CR19	6	CR39	6	J3	8	Q8	10	R2	13

Figure 10. Electrical Synchronizer Subassembly PL-1124/G (Sheet 2 of 3).

EL4CB025

REF. DES.	ITEM NO.	REF. DES.	ITEM NO.	REF. DES.	ITEM NO.	REF. DES.	ITEM NO.	REF. DES.	ITEM NO.	REF. DES.	ITEM NO.
R3	14	R20	17	R37	12	R54	19	R71	33	R88	34
R4	15	R21	12	R38	12	R55	21	R72	34	R89	34
R5	16	R22	14	R39	12	R56	25	R73	17	R90	39
R6	12	R23	15	R40	18	R57	14	R74	17	R91	13
R7	17	R24	12	R41	19	R58	26	R75	29	R92	17
R8	12	R25	16	R42	20	R59	22	R76	12	R93	23
R9	12	R26	13	R43	21	R60	20	R77	35	R94	29
R10	12	R27	12	R44	12	R61	27	R78	12	R95	15
R11	12	R28	17	R45	22	R62	23	R79	34	R96	24
R12	16	R29	12	R46	14	R63	28	R80	36	R97	17
R13	14	R30	12	R47	23	R64	29	R81	12	R98	40
R14	15	R31	12	R48	21	R65	16	R82	23	R99	34
R15	17	R32	12	R49	24	R66	30	R83	37	R100	33
R16	13	R33	16	R50	24	R67	31	R84	17	R101	23
R17	12	R34	13	R51	18	R68	20	R85	38	R102	34
R18	12	R35	15	R52	21	R69	12	R86	33	R103	26
R19	12	R36	14	R53	18	R70	32	R87	36	R104	17

EL4CB026

Figure 10. Electrical Synchronizer Subassembly PL-1124/G (Sheet 3 of 3).

## SECTION II

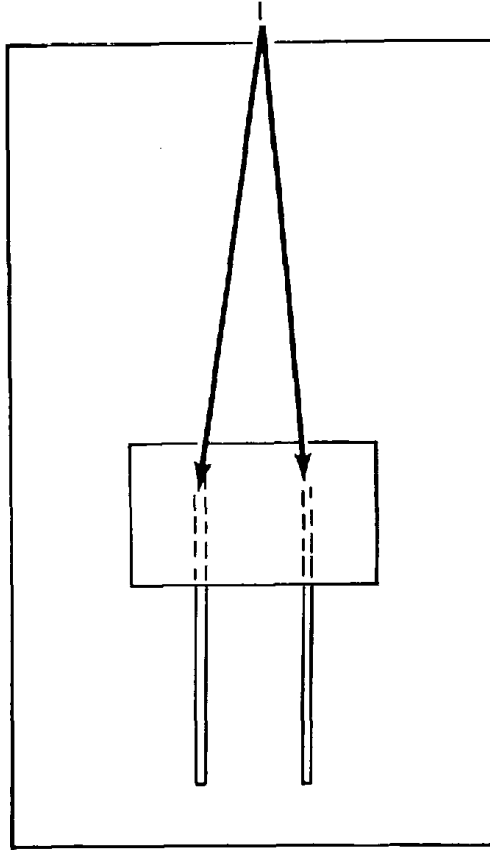
TM 11-5895-543-34P/NAVELEX 0967-LP-616-1020/TO 31W1-2G-234-2

(1) ILLUSTRATION		(2)	(3)	(4)	(5)	(6) DESCRIPTION	(7)	(8)
(a) FIG NO.	(b) ITEM NO.	SMR CODE	NATIONAL STOCK NUMBER	PART NUMBER	FSCM	USABLE ON CODE	U/M	QTY INC IN UNIT
						GROUP 0205 ELECTRICAL SYNCHIONIZER		
						SUBASSEMBLY PL-1124/G		
10	1	PADZZ	5910-00-983-6866	CK61BX471K	81349	CAPACITOR,FXD,CER.....	EA	8
10	2	PADZZ	5910-00-884-0800	CK62BX152K	81349	CAPACITOR,FXD,CER.....	EA	1
10	3	PADZZ	5910-00-787-2109	CS13BF105K	81349	CAPACITOR,ELCTLT.....	EA	6
10	4	PADZZ	5910-00-838-0869	CK638X332K	81349	CAPACITOR,FXD,CER.....	EA	4
10	5	PADZZ	5910-00-783-9403	CS13BD226K	81349	CAPACITOR,FXD,DER,CAPACITOR,ELCLT.	EA	2
10	6	PADZZ	5961-00-842-9864	1N914	81349	SEMICONDUCTOR,DEVICE.....	EA	54
10	7	PADZZ	5961-00-865-3448	1N691	81349	SEMICONDUCTOR,DIODE.....	EA	2
10	8	PADZZ	5935-00-933-2804	105-737	74970	JACK,TIP.....	EA	8
10	9	PADZZ	5935-00-933-2802	105-734	74970	JACK,TIP.....	EA	7
10	10	PADZZ	5961-00-050-7499	2N2219	81349	TRANSISTOR.....	EA	21
10	11	PADZZ	5961-00-949-1440	JAN2N2905A	81349	TRANSISTOR.....	EA	5
10	12	PADZZ	5905-00-682-4104	RC07GF623J	81349	RESISTOR,FXD,CMPSN.....	EA	24
10	13	PADZZ	5905-00-682-4098	RC07GF392J	81349	RESISTOR,FXD,CMPSN.....	EA	5
10	14	PADZZ	5905-00-767-2843	RL20S682J	81349	RESISTOR,FXD,FILM.....	EA	6
10	15	PADZZ	5905-00-682-4101	RC07GF75752J2J	81349	RESISTOR,FXD,CMPSN.....	EA	5
10	16	PADZZ	5905-00-766-8363	RL20S333J	81349	RESISTOR,FXD,FILM.....	EA	5
10	17	PADZZ	5905-00-805-9714	RC07GF362J	81349	RESISTOR,FXD,CMPSN.....	EA	10
10	18	PADZZ	5905-00-765-5628	RL20S332J	81349	RESISTOR,FXD,FILM.....	EA	3
10	19	PADZZ	5905-00-767-3205	RL20S822J	81349	RESISTOR,FXD,FILM.....	EA	2
10	20	PADZZ	5905-00-279-1757	RC20GF152J	81349	RESISTOR,FXD,CMPSN.....	EA	3
10	21	PADZZ	5905-00-768-5922	RL20S152J	81349	RESISTOR,FXD,FILM.....	EA	4
10	22	PADZZ	5905-00-195-6806	RC20GF102J	81349	RESISTOR,FXD,CMPSN.....	EA	2
10	23	PADZZ	5905-00-681-6462	RC07GF102J	81349	RESISTOR,FXD,CMPSN.....	EA	5
10	24	PADZZ	5905-00-681-6462	RC07GF242J	81349	RESISTOR,FXD,CMPSN.....	EA	3
10	25	PADZZ	5905-00-683-2241	RC07GF512J	81349	RESISTOR,FXD,CMPSN.....	EA	1
10	26	PADZZ	5905-00-683-7721	RC07GF202J	81349	RESISTOR,FXD,CMPSN.....	EA	2
10	27	PADZZ	5905-00-683-7721	RC07GF101J	81349	RESISTOR,FXD,CMPSN.....	EA	1
10	28	PADZZ	5905-00-443-7796	RCR32G241JS	81349	RESISTOR,FXD,CMPSN.....	EA	1
10	29	PADZZ	5905-00-682-4097	RC07GF302J	81349	RESISTOR,FXD,CMPSN.....	EA	3
10	30	PADZZ	5905-00-186-2972	RC42GF511J	81349	RESISTOR,FXD,CMPSN.....	EA	1
10	31	PADZZ	5905-00-279-2626	RC32GF681J	81349	RESISTOR,FXD,CMPSN.....	EA	1
10	32	XDDZZ		RL20S911J	81349	RESISTOR,FXD,FILM.....	EA	1
10	33	PADZZ	5905-00-682-4100	RC07GF622J	81349	RESISTOR,FXD,CMPSN.....	EA	3
10	34	PADZZ	5905-00-721-0597	RC07GF243J	81349	RESISTOR,FXD,CMPSN.....	EA	6
10	35	PADZZ	5905-00-767-3219	RL20S202J	81349	RESISTOR,FXD,FILM.....	EA	1
10	36	PADZZ	5905-00-807-0059	RC07GF433J	81349	RESISTOR,FXD,CMPSN.....	EA	2
10	37	PADZZ	5905-00-726-4413	RC07GF123J	81349	RESISTOR,FXD,CMPSN.....	EA	1
10	38	PADZZ	5905-00-762-3667	RL20S103J	81349	RESISTOR,FXD,FILM.....	EA	1
					<b>49</b>			

SECTION II

TM 11-5895-543-34P/NAVELEX 0967-LP-616-1020/TO 31W1-2G-234-2

(1) ILLUSTRATION		(2)	(3)	(4)	(5)	(6)	(7)	(8)
(a) FIG NO.	(b) ITEM NO.	SMR CODE	NATIONAL STOCK NUMBER	PART NUMBER	FSCM	DESCRIPTION  USABLE ON CODE	U/M	QTY INC IN UNIT
10	39	PADZZ	5905-00-882-0061	RL20S472J	81349	RESISTOR,FXD,FILM.....	EA	1
10	40	PADZZ	5905-00-752-3186	RC07GF163J	81349	RESISTOR,FXD,CMPSN.....	EA	1
10	41	PADZZ	7040-00-917-0701	203-100DKGRN	18677	CARD EJECTOR.....	EA	2
10	42	PADZZ	5999-00-981-9339	5001-1923	91662	CONTACT,ELECTRICAL.....	EA	33
<b>50/(51 blank)</b>								



EL4CB027

Figure 11. Sync Verification Module SMD-546873



SECTION II TM 11-5895-543-34P/NAVELEX 0967-LP-616-1020/TO 31W1-2G-234-2

(1) ILLUSTRATION		(2)	(3)	(4)	(5)	(6)	(7)	(8)
(a) FIG NO.	(b) ITEM NO.	SMR CODE	NATIONAL STOCK NUMBER	PART NUMBER	FSCM	DESCRIPTION  USABLE ON CODE	U/M	QTY INC IN UNIT
11	1	PADZZ	599-00-981-9339	5001-1923	91662  53	GROUP 0206 SYNCHRONIZER VERIFICATION NODULE SMD-546873 CONTACT,ELECTRICAL .....	EA	2

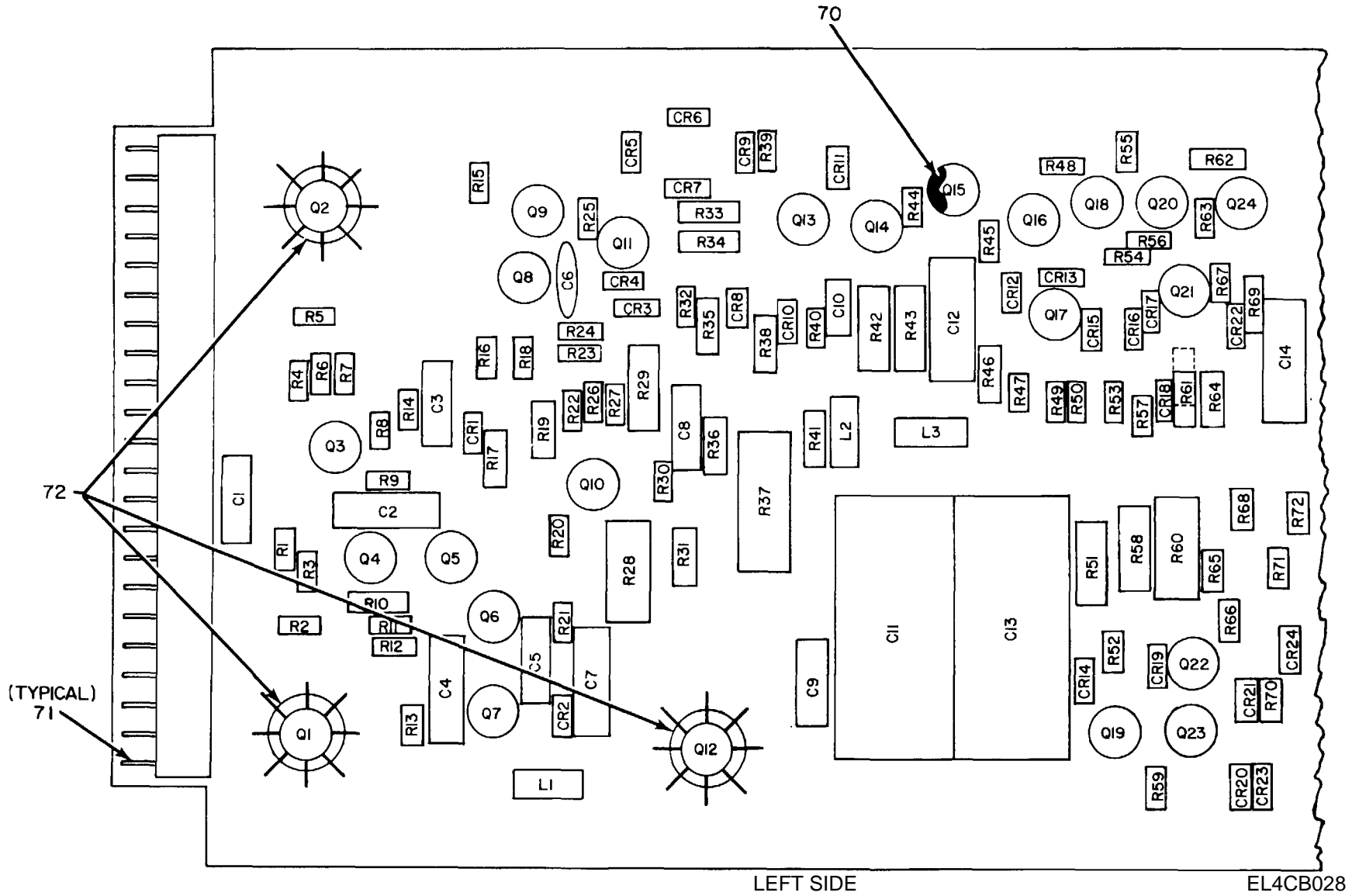
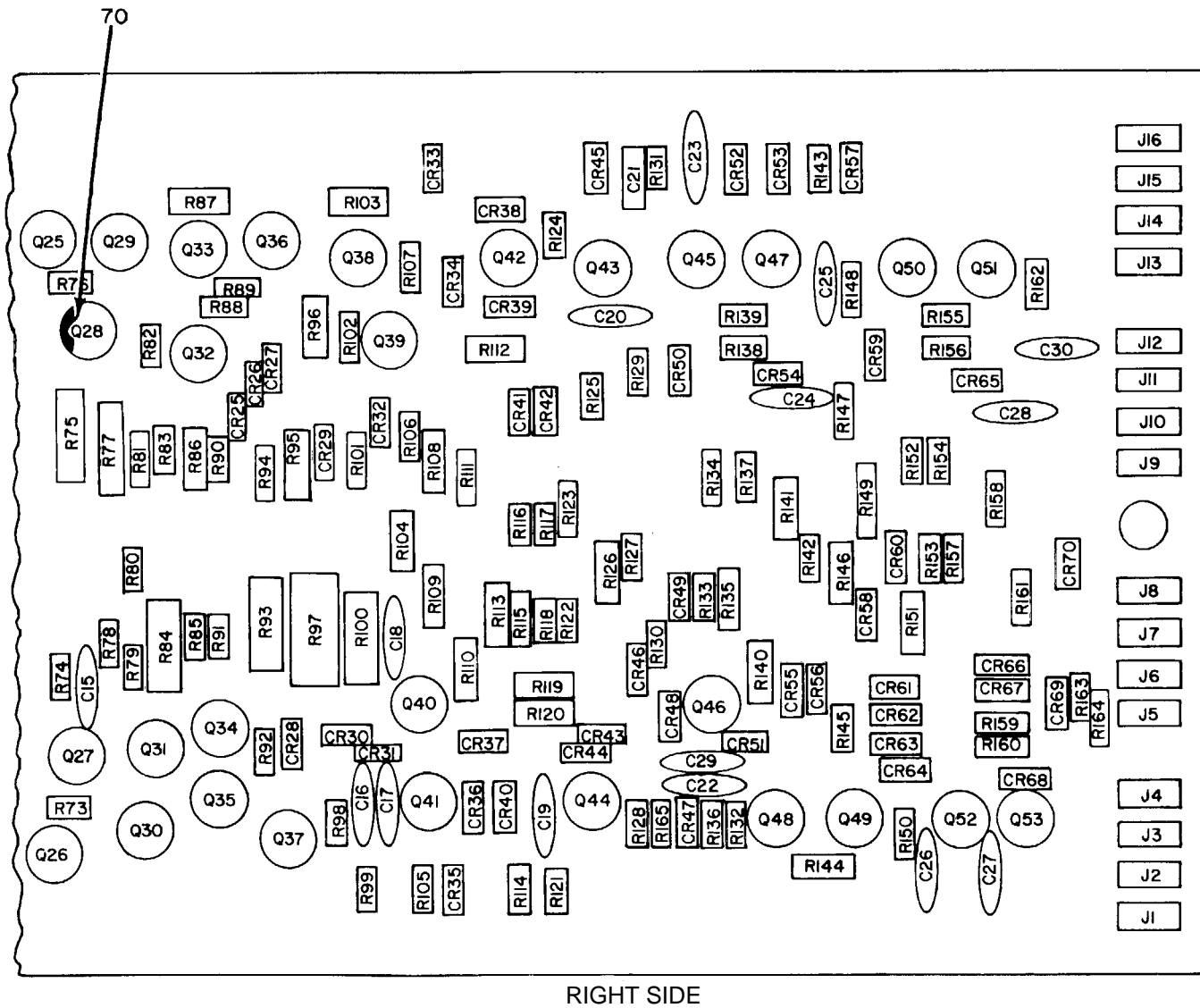


Figure 12. Electrical Synchronizer Subassembly PL-1119/G (Sheet 1 of 5).



RIGHT SIDE

EL4CB036

Figure 12. Electrical Synchronizer Subassembly PL-1119/G (Sheet 2 of 5).

REF. DES.	ITEM NO.	REF. DES.	ITEM NO.	REF. DES.	ITEM NO.	REF. DES.	ITEM NO.	REF. DES.	ITEM NO.	REF. DES.	ITEM NO.
C1	1	C21	6	CR11	13	CR31	14	CR51	14	J1	15
C2	2	C22	10	CR12	14	CR32	14	CR52	14	J2	15
C3	3	C23	10	CR13	14	CR33	14	CR53	14	J3	15
C4	2	C24	11	CR14	14	CR34	14	CR54	14	J4	16
C5	1	C25	11	CR15	14	CR35	14	CR55	14	J5	17
C6	4	C26	11	CR16	14	CR36	14	CR56	14	J6	18
C7	2	C27	11	CR17	14	CR37	14	CR57	14	J7	18
C8	5	C28	11	CR18	14	CR38	14	CR58	14	J8	18
C9	3	C29	10	CR19	14	CR39	14	CR59	14	J9	18
C10	6	C30	11	CR20	14	CR40	14	CR60	14	J10	16
C11	7	CR1	12	CR21	14	CR41	14	CR61	14	J11	16
C12	8	CR2	13	CR22	14	CR42	13	CR62	14	J12	16
C13	7	CR3	14	CR23	14	CR43	14	CR63	14	J13	15
C14	8	CR4	14	CR24	14	CR44	14	CR64	14	J14	15
C15	9	CR5	14	CR25	14	CR45	14	CR65	14	J15	15
C16	10	CR6	14	CR26	14	CR46	14	CR66	14	J16	15
C17	10	CR7	14	CR27	14	CR47	14	CR67	14	L1	19
C18	11	CR8	14	CR28	14	CR48	14	CR68	14	L2	20
C19	10	CR9	14	CR29	14	CR49	14	CR69	14	L3	20
C20	4	CR10	13	CR30	13	CR50	14	CR70	14	Q1	21

Figure 12. Electrical Synchronizer Subassembly PL-1119/G (Sheet 2 of 5).

REF. DES.	ITEM NO.	REF. DES.	ITEM NO.	REF. DES.	ITEM NO.	REF. DES.	ITEM NO.	REF. DES.	ITEM NO.	REF. DES.	ITEM NO.
Q2	22	Q22	21	Q42	22	R9	29	R29	39	R49	35
Q3	21	Q23	21	Q43	22	R10	30	R30	25	R50	37
Q4	22	Q24	22	Q44	22	R11	27	R31	30	R51	53
Q5	21	Q25	22	Q45	22	R12	28	R32	37	R52	50
Q6	22	Q26	22	Q46	21	R13	29	R33	40	R53	27
Q7	22	Q27	22	Q47	22	R14	31	R34	41	R54	54
Q8	22	Q28	23	Q48	22	R15	32	R35	42	R55	25
Q9	22	Q29	21	Q49	22	R16	33	R36	43	R56	47
Q10	21	Q30	21	Q50	22	R17	34	R37	44	R57	27
Q11	22	Q31	22	Q51	22	R18	35	R38	45	R58	53
Q12	21	Q32	22	Q52	22	R19	34	R39	46	R59	55
Q13	22	Q33	22	Q53	22	R20	36	R40	47	R60	56
Q14	22	Q34	21	R1	24	R21	29	R41	48	R61	57
Q15	23	Q35	21	R2	25	R22	27	R42	49	R62	58
Q16	22	Q36	22	R3		R23	35	R43	49	R63	24
Q17	21	Q37	22	R4	24	R24	37	R44	50	R64	57
Q18	22	Q38	22	R5	25	R25	35	R45	51	R65	25
Q19	22	Q39	21	R6	26	R26	35	R46	52	R66	36
Q20	22	Q40	21	R7	27	R27	37	R47	25	R67	36
Q21	21	Q41	22	R8	28	R28	38	R48	37	R68	33

EL4CB030

Figure 12. Electrical Synchronizer subassembly PL-1119/G (Sheet 3 of 5).

REF. DES.	ITEM NO.	REF. DES.	ITEM NO.	REF. DES.	ITEM NO.	REF. DES.	ITEM NO.	REF. DES.	ITEM NO.
R69	58	R89	47	R109	42	R129	35	R149	67
R70	28	R90	27	R110	63	R130	28	R150	69
R71	27	R91	25	R111	64	R131	65	R151	67
R72	35	R92	50	R112	40	R132	24	R152	35
R73	59	R93	53	R113	43	R133	36	R153	35
R74	33	R94	27	R114	55	R134	35	R154	35
R75	49	R95	57	R115	65	R135	57	R155	37
R76	50	R96	58	R116	48	R136	54	R156	37
R77	49	R97	56	R117	35	R137	35	R157	35
R78	36	R98	27	R118	37	R138	37	R158	67
R79	31	R99	62	R119	66	R139	37	R159	37
R80	33	R100	53	R120	40	R140	58	R160	37
R81	52	R101	57	R121	62	R141	67	R161	67
R82	36	R102	36	R122	48	R142	27	R162	35
R83	25	R103	58	R123	67	R143	35	R163	69
R84	53	R104	43	R124	35	R144	58	R164	69
R85	27	R105	28	R125	62	R145	69	R165	33
R86	60	R106	50	R126	61	R146	57		
R87	61	R107	24	R127	68	R147	35		
R88	54	R108	42	R128	33	R148	35		

EL4CB03

Figure 12. Electrical Synchronizer Subassembly PL-1119/G (Sheet 4 of 5).

## SECTION II

TM 11-5895-543-34P/NAVELEX 0967-LP-616-1020/TO 31W1-2G-234-2

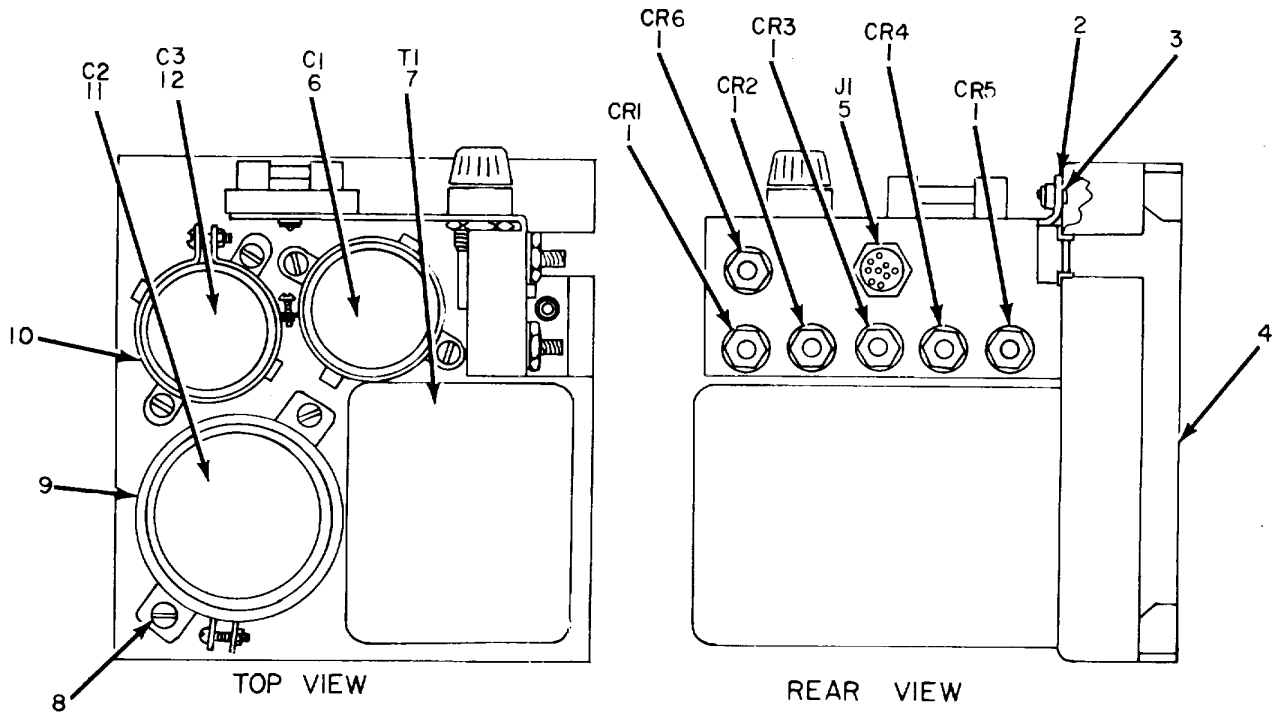
(1)		(2)	(3)	(4)	(5)	(6)	(7)	(8)
ILLUSTRATION		SMR CODE	NATIONAL STOCK NUMBER	PART NUMBER	FSCM	DESCRIPTION	U/M	QTY INC IN UNIT
(a) FIG NO.	(b) ITEM NO.							
						GROUP 03 ELECTRICAL SYNCHRONIZER		
						SURASSEMBLY PL-1119/G		
12	1	PADZZ	5910-00-783-9403	CS13RD226K	81349	CAPACITOR,ELCTLT .....	EA	2
12	2	PADZZ	5910-00-835-2719	CTM223VAK	81349	CAPACITOR,FXD,PLSTC .....	EA	3
12	3	XDDZZ			81349	CAPACITOR,ELCTLT .....	EA	2
12	4	PADZZ	5910-00-884-0800	CK62BX152K	81349	CAPACITOR,FXD,CER .....	EA	2
12	5	PADZZ	5910-00-110-0932	CSR13G12611	81349	CAPACITOR,ELCTLT .....	EA	1
12	6	PADZZ	5910-00-835-2710	CTM103VAK	81349	CAPACITOR,FXD,PLSTC .....	EA	2
12	7	PADZZ	5910-00-987-4627	39D208G006GJ4	56289	CAPACITOR,ELCTLT .....	EA	2
12	8	XDDZZ		CTM823VAK	56289	CAPACITOR,FXD,PLSTC .....	EA	2
12	9	PADZZ	5910-00-822-8214	CK60BX470K	81349	CAPACITOR,FXD,CER .....	EA	1
12	10	PADZZ	5910-00-838-0869	CK63BX332K	81349	CAPACITOR,FXD,CER .....	EA	6
12	11	PADZZ	5910-00-983-6866	CK61BX471K	81349	CAPACITOR,FXD,CER .....	EA	7
12	12	PADZZ	5961-00-995-2310	1N752A	81349	SEMICONDUCTOR,DIODE .....	EA	1
12	13	PADZZ	5961-00-865-3448	1N691	81349	SEMICONDUCTOR,DIODE .....	EA	5
12	14	PADZZ	5961-00-842-9864	1N914	81349	SEMICONDUCTOR,DIODE .....	EA	64
12	15	PADZZ	5935-00-933-2803	105-732	74970	JACK,TIP .....	EA	7
12	16	PADZZ	5935-00-933-2804	105-737	74970	JACK,TIP .....	EA	4
12	17	PADZZ	5935-00-933-2805	105-733	74970	JACK,TIP .....	EA	1
12	18	PADZZ	5935-00-933-2802	105-734	74970	JACK,TIP .....	EA	4
12	19	PADZZ	5950-00-893-8650	MS90539-15	96906	COIL,RF .....	EA	1
12	20	PADZZ	5950-00932-2727	MS90539-08	96906	COIL,RF .....	EA	2
12	21	PADZZ	5961-00-949-1440	JAN2N2905A	81349	TRANSISTOR.....	EA	16
12	22	PADZZ	5961-00-050-7499	2N2219	81349	TRANSISTOR.....	EA	35
12	23	PADZZ	5961-00-837-9112	SMB551595	80063	TRANSISTOR.....	EA	2
12	24	PADZZ	5905-00-682-4100	RC07GF622J	81349	RESISTOR,FXD,CMPSN .....	EA	5
12	25	PADZZ	5905-00-681-6462	RC07GF102J	81349	RESISTOR,FXD,CMPSN .....	EA	8
12	26	PADZZ	5905-00-682-4108	RC07GF241J	81349	RESISTOR,FXD,CMPSN .....	EA	2
12	27	PADZZ	5905-00-682-4098	RC07GF392J	81349	RESISTOR,FXD,CMPSN .....	EA	11
12	28	PADZZ	5905-00-807-4954	RC07GF751J	81349	RESISTOR,FXD,CMPSN .....	EA	5
12	29	PADZZ	5905-00-817-7971	RC07GF100J	81349	RESISTOR,FXD,CMPSN .....	EA	3
12	30	PADZZ	5905-00-988-2280	RN60D2001F	81349	RESISTOR,FXD,FILM .....	EA	2
12	31	PADZZ	5905-00-683-7723	RC07GF152J	81349	RESISTOR,FXD,CMPSN .....	EA	2
12	32	PADZZ	5905-00-683-2241	RC07GF512J	81349	RESISTOR,FXD,CMPSN .....	EA	1
12	33	PADZZ	5905-00-681-8818	RC07GF153J	81349	RESISTOR,FXD,CMPSN .....	EA	6
12	34	PADZZ	5905-00-761-1903	RC07GF371F	81349	RESISTOR,FXD,FILM .....	EA	2
12	35	PADZZ	5905-00-682-4104	RC07GF623J	81349	RESISTOR,FXD,CMPSN .....	EA	19
12	36	PADZZ	5905-00-682-4097	RC07GF302J	81349	RESISTOR,FXD,CMPSN .....	EA	7
12	37	PADZZ	5905-00-682-4101	RC07GF752J	81349	RESISTOR,FXD,CMPSN .....	EA	12
12	38	PADZZ	5905-00-279-2596	RC42GF121J	81349	RESISTOR,FXD,CMPSN .....	EA	1

SECTION II

TM 11-5895-543-34P/NAVELEX 0967-LP-616-1020/TO 31W1-2G-234-2

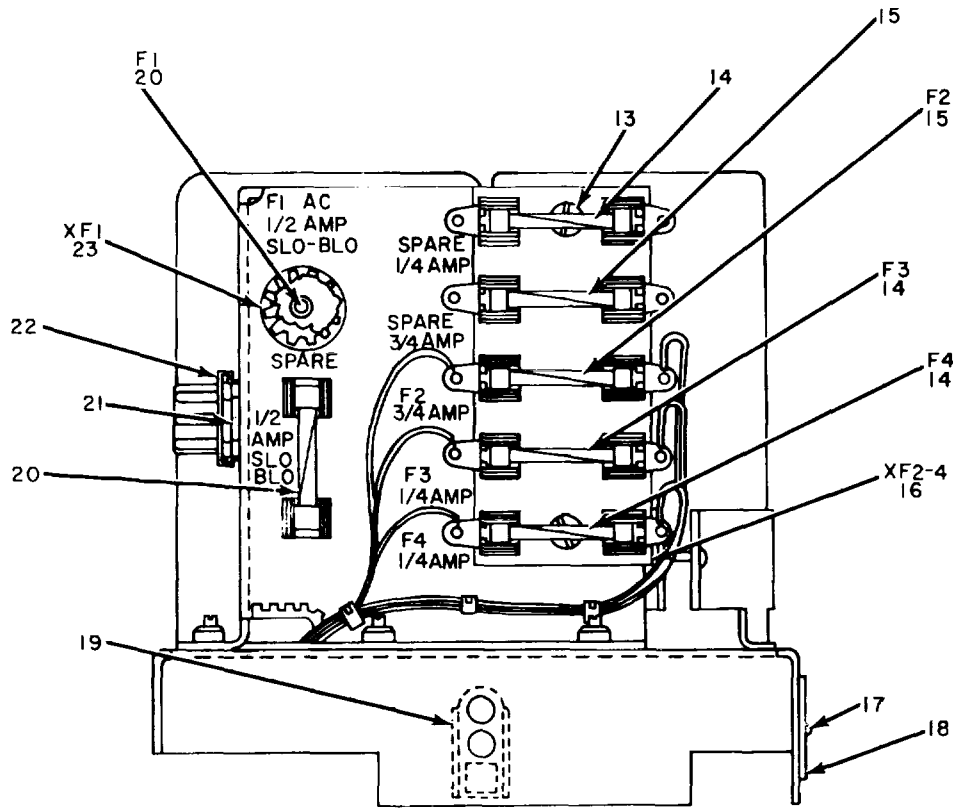
(1) ILLUSTRATION		(2)	(3)	(4)	(5)	(6) DESCRIPTION	(7)	(8)
(a) FIG NO.	(b) ITEM NO.	SMR CODE	NATIONAL STOCK NUMBER	PART NUMBER	FSCM	USABLE ON CODE	U/M	QTY INC IN UNIT
12	39	PADZZ	5905-00-279-2626	RC32GF68IJ	81349	RFSISTOR,FXD,CMPSN.....	EA	1
12	40	PADZZ	5905-00-766-8368	RL205302J	81349	RESISTOR,FXD,FILM.....	EA	
12	41	XDDZZ		RL205S11J	81349	RESISTOR FXD FILM.....	EA	
12	42	PADZZ	5905-00-767-3213	RL205153J	81349	RESISTOR,FXD,FILM.....	EA	
12	43	PADZZ	5905-00-195-6806	RCZOGFI02J	81349	RESIST1 R,FXD,CMPSN.....	EA	
12	44	X8WZZ		RW57G400	81349	RESISTOR,FXD,WW.....	EA	1
12	45	PADZZ	5905-00-882-0061	AL205472J	81349	RESISTOR,FXD,.....	EA	1
12	46	PADZZ	5905-00-686-3369	RCO0GF331J	81349	RESISTDR,FXD,CMPSN.....	EA	1
12	47	PADZZ	5905-00-721-0597	RC07GF243J	81349	RESISTOR,FXD,CMPSN.....	EA	3
12	48	PADZZ	5905-03-723-5251	RC07GF222J	81349	RESISTOR,FXD,CMPSN.....	EA	3
12	49	PADZZ	5905-00-247-8738	RCR32G750JS	81349	RESISTOR,FXD.CMPSN.....	EA	4
12	50	PADZZ	5905-00-686-9994	RCD07GF12J	81349	RESISTOR,FXD,CMPSN.....	EA	5
12	51	PADZZ	5905-00-686-3798	RC073F272J	81349	RESISTOR,FXD,CMPSN.....	EA	1
12	52	PADZZ	5905-00-190-8880	RCZOGFIZ2J	81349	RESISTOR,FXD,CMPSN.....	EA	2
12	53	PADZZ	5905-00-463-9584	RcR32G620JS	81349	RESISTOR,FXD,CMPSN.....	EA	5
12	54	PADZZ	5905-00-686-9996	RC07GF8ZIJ	81349	RESISTOR,FXD,CMPSN.....	EA	3
12	55	PADZZ	590S-00-683-2236	RCO07F391J	81349	RESISTOR,FXD,CMPSN.....	EA	2
12	56	PADZZ	5905-00-256-8352	9C42GF12J	81349	RESISTOR,FXDCNMPSN.....	EA	2
12	57	PADZZ	5905-00-057-9634	RN6DD2492F	81349	RESISTOR,FXD,FILM.....	EA	6
12	58	PADZZ	5905-00-051-8012	RN60D7321F	81149	RESISTOR,FXD,FILM.....	EA	6
12	59	PADZZ	5905-00-686-3370	RC07GF202J	81349	RESISTOR.FXD.CMPSN.....	EA	1
12	60	PADZZ	5905-00-766-8363	RLZOS333J	81349i	RESISTOR,FXD,FILM.....	EA	1
12	61	PADZZ	5905-00-767-2843	RLZ05682J	81349	RFSIISTOR,FXD,FILM.....	EA	2
12	62	PADZZ	5905-00-111-4845	RCR07G201JS	81349	RESISTOR,FXD,CMPSN.....	EA	3
12	63	PADZZ	5905-00-279-1757	RC20GF152J	81349	RFSISTOR.FXD,CMPSN.....	EA	1
12	64	PADZZ	5905-00-683-2238	RC07GF103J	81349	RESISTOR,FXD,CMPSN.....	EA	1
12	65	PADZZ	5905-00-801-8272	RC07GFSIJ	81349	RESISTOR,FXD,CMPSN.....	EA	2
12	66	PADZZ	5905-00-063-4753	RL205132J	81349	RESISTOR,FXD,FILA.....	EA	1
12	67	PADZZ	5905-00-279-3535	RC20GF392J	81349	RESISTOR,FXD,CMPSN.....	EA	6
12	68	PADZZ	5905-00-683-7724	RC07GF242J	81349	RESISTOR,FXD,CMPSN.....	EA	1
12	69	PADZZ	5905-00-686-3903	RC07GF333J	81349	RESISTOR,FXD,CMPSN.....	EA	4
12	70	PADZZ	5999-00-226-1755	10194DAP	07047	PAD,TRANISISTOR.....	EA	2
12	71	PADZZ	5999-00-981-9339	5001-1923	91662	CONTACT,ELECTRICAL.....	EA	2
12	72	XDDZZ		NF209	05820	HEAT SINK,ELECTRICAL.....	EA	3
					<b>60</b>			



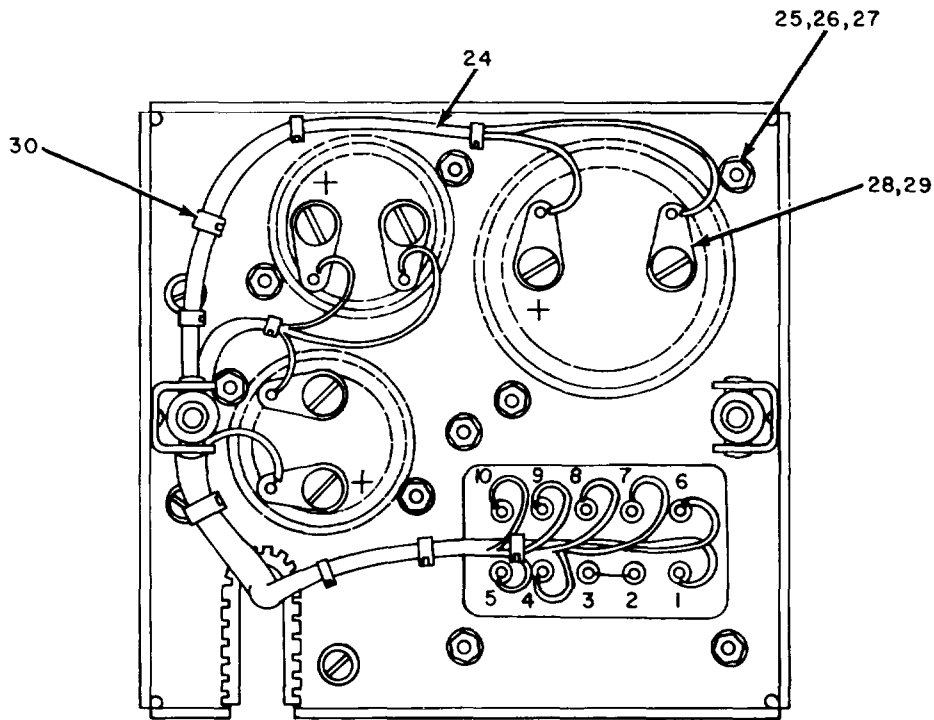


EL4CB032

Figure 13. Power Supply PP-4540/G (Sheet 1 of 2).



LEFT SIDE VIEW



BOTTOM VIEW

EL4CB033

Figure 13. Power Supply PP-4540/G (Sheet 2 of 2).

SECTION II

TM11-5895-543-34P/NAVELEX 0967-LP-616-1020/TO 31W1-2G-234-2

(1) ILLUSTRATION		(2)	(3)	(4)	(5)	(6)	(7)	(8)
(a) FIG NO.	(b) ITEM NO.	SMR CODE	NATIONAL STOCK NUMBER	PART NUMBER	FSCM	DESCRIPTION  USABLE ON CODE	U/M	QTY INC IN UNIT
13	1	PAFZZ	5961-00-978-5966	1N1614	81349	GROUP 04 POWER SUPPLY PP-4540/G		
13	2	XDFZZ		SMC546906	80063	SEMICONDUCTOR,DIODE .....	EA	6
13	3	PAFZZ	5305-00-984-4989	MS35225-29	96906	BRACKFT,POWER SPLY .....	EA	1
13	4	XDFZZ		SMD46905	80063	SCREW,MACHINE.....	EA	3
13	5	PAFZZ	5935-00-754-8795	MS24056-2	96906	CHASSIS,ELEC EQPT.....	EA	1
13	6	PAFZZ	5910-00-781-918	CE71C562E	81349	CONNECTOR,RCPT,ELEC.....	EA	3
13	7	PAFZZ	5950-00-933-4504	SMC546894	80063	CAPACITOR,ELCTLT .....	EA	1
13	8	PAFZZ	5305-00-984-4988	MS35206-25	96906	TRANSFORMER,POWER .....	EA	1
13	9	XDFZZ		SMB54696J	80063	SCREW,MACHINE.....	EA	6
13	10	XDFZZ		SMB546959	80063	RFTAINER,CAPACITOR.....	EA	1
13	11	XDFZZ		CF71C123E	81349	RETAINER,CAPACITOR.....	EA	2
13	12	PAFZZ	5910-00-903-2984	CE71C332F	81349	CAPACITOR,ELCTLT .....	EA	1
13	13	XDFZZ		MS35239-38	96906	CAPACITOR,ELCTLT .....	EA	1
13	14	PAOZZ	5920-00-235-8358	F01A250V1-4A	81349	SCREW,MACHINE.....	EA	2
13	15	PAOZZ	5920-00-280-5074	F01A125V3-4A	81349	FUSE,CARTRIDGE.....	EA	3
13	16	XDFZZ		FH21GM	81349	FUSE,CARTRIDGE.....	EA	2
13	17	PAFZZ	5305-00-253-5604	MS21318-7	96906	FUSEHOLDER.....	EA	1
13	18	XDFZZ		SMC546396-03	80063	SCREW,DRIVE .....	EA	2
13	19	XDFZZ		SMB532003	80063	PLATE,INDENT .....	EA	1
13	20	PAOZZ	5920-00-199-9498	F02B250V1-2A	81349	INSFRT,SSCREW THREAD .....	EA	2
13	21	XDFZZ		MS20417-2	96906	FUSE,CARTRIDGE.....	EA	2
13	22	PAFZZ	5935-00-631-1408	MS24057-2	96906	FUSE,CARTRIDGE.....	EA	1
13	23	PAFZZ	5923-00-556-0144	FHN20G	81349	NUT,PLAIN,HEXAGON.....	EA	1
13	24	XDFZZ		SMD532040	80063	RETAINER,ELEC CONN.....	EA	1
13	25	PAFZZ	5310-03-013-4530	MS35649-62	96906	FUSEHOLDER.....	EA	1
13	26	PAFZZ	5310-00-950-1310	MS15795-204	96906	CABLE ASSY ,PWR SPLY.....	EA	1
13	27	PAFZZ	5310-00-045-4007	MS35338-41	96906	NUT,PLAIN,HEXAGON.....	EA	12
13	28	PAFZZ	5940-00-683-4339	MS35431-7	96906	WASHER,FLAT .....	EA	15
13	29	PAFZZ	5310-00-045-3796	MS35338-43	96906	WASHER,LOCK-SPRING .....	EA	15
13	30	PAFZZ	5975-03-074-2072	MSU7821-1-9	96906	TERMINAL,LUG .....	EA	6
					96906	WASHER,LOCK .....	EA	6
					96906	STRAP,LINE SUPPORT .....	EA	17
					<b>63</b>			

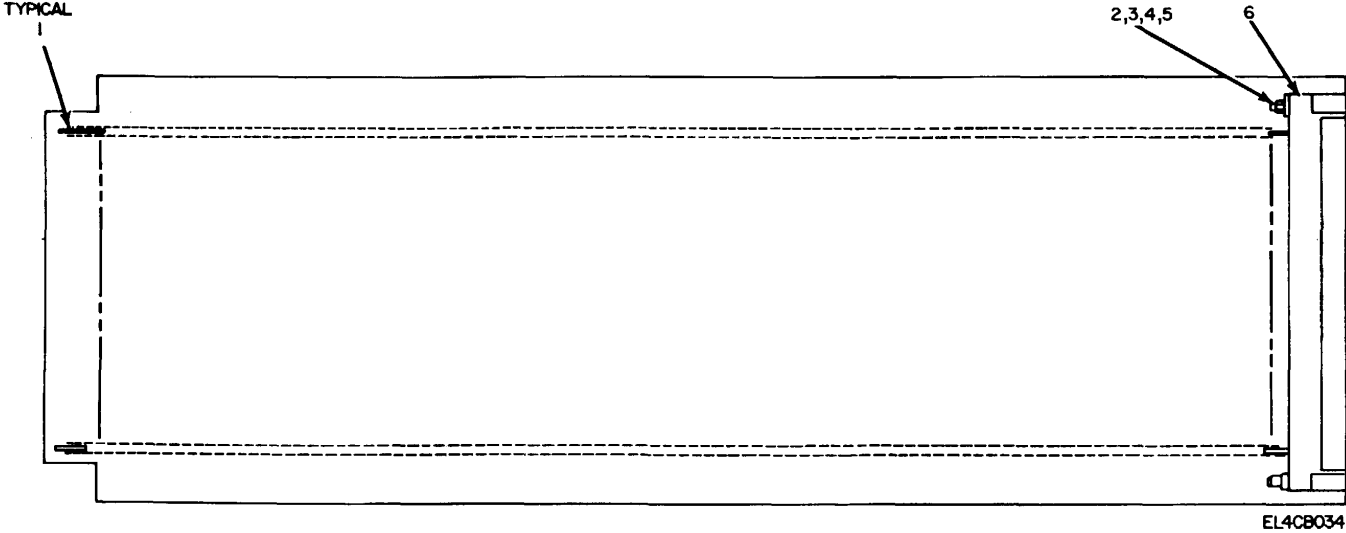
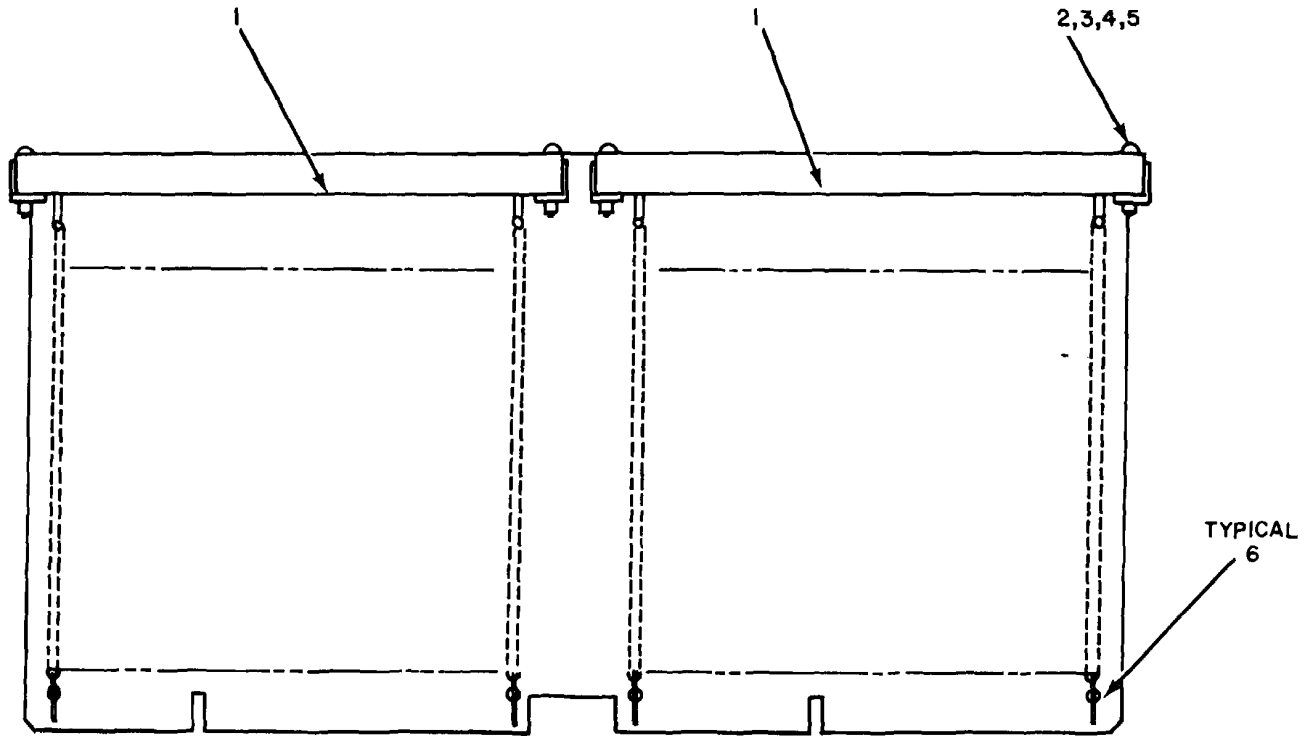


Figure 14. Special Tool, Extender Card Assembly SMD-532026 .

SECTION III

TM11-5895-543-34P/NAVELEX 0967-LP-616-1020/TO 31W1-2G-234-2

(1) ILLUSTRATION		(2)	(3)	(4)	(5)	(6)	(7)	(8)
(a) FIG NO.	(b) ITEM NO.	SMR CODE	NATIONAL STOCK NUMBER	PART NUMBER	FSCM	DESCRIPTION  USABLE ON CODE	U/M	QTY INC IN UNIT
14	1	PEODL	5895-00-933-6832	SM0532026	80063	GROUP 30 SPECIAL TOOL,EXTENDER CARD ASSEMBLY SMD-532026  EXTENDER CARD ASSY B0I:1 AUTH PER 1 EQUIPMENT		
14	1	PADZZ	5999-00-981-9339	5001-1923	91662	CONTACT,ELECTRICAL	EA	26
14	2	XDDZZ		MS35649-42	96906	NUT,PLAIN,HEXAGON	EA	2
14	3	PADZZ	5305-00-983-6730	MS35206-218	96906	SCREW,MACHINE	EA	2
14	4	PADZZ	5310-00-951-4679	MS27183-3	96906	WASHER,FLAT	EA	2
14	5	PADZZ	5310-00-543-2410	MS35338-40	96906	WASHER,LOCK-SPRING	EA	2
14	6	PADZZ	5935-00-926-7403	M21097-2-26	96906	CONNECTOR,RCPT,ELEC	EA	1
					<b>65</b>			



EL4CB035

Figure 15 . Special Tool, Extender Card Assembly SMD-532022 .

SECTION II

TM11-5895-543-34P/NAVELEX 0967-LP-616-1020/TO 31W1-2G-234-2

(1) ILLUSTRATION		(2)	(3)	(4)	(5)	(6) DESCRIPTION	(7)	(8)
(a) FIG NO.	(b) ITEM NO.	SMR CODE	NATIONAL STOCK NUMBER	PART NUMBER	FSCM	USABLE ON CODE	U/M	QTY INC IN UNIT
15		PEODL	5895-00-933-6831	SM532022	80063	GROUP 31 SPECIAL TOOL,EXTENDER CARD ASSEMBLY SMD-532022 EXTENDER CARD ASSY		
15	1	PADZZ	5935-00-937-4917	SMB532032	80063	BOI: 1 AUTH PER 1 EQUIPMENT CONNECTOR,RCPT.ELEC	EA	2
15	2	XDDZZ		MS35223-19	96906	SCREW,NACHINE PN HD	EA	4
15	3	PADZZ	5310-00-951-4679	MS27183-3	96906	WASHER,FLAT	EA	4
15	4	PADZZ	5310-00-543-2410	MS35338-40	96906	WASHER,LOCK-SPRING	EA	4
15	5	XDDZZ		MS35649-42	96906	NUT,PLAIN,HEXAGON	EA	4
15	6	PADZZ	5999-00-981-9339	5001-1923	91662	CONTACT,ELECTRICAL	EA	42
					<b>67</b>			

**SECTION IV**

**TM11-5985-543-34P/NAVELEX 0967-LP-616-1020/TO 31W1-2G-234-2**

**NATIONAL STOCK NUMBER AND PART NUMBER INDEX**

**NOTE: Latest National Stock Number and Part Number Assignments are included at End of Index**

<b>STOCK NUMBER</b>	<b>FIG.</b>	<b>ITEM</b>	<b>STOCK NUMBER</b>	<b>FIG.</b>	<b>ITEM</b>
5310-00-013-4530	3	4	5310-00-550-3503	3	48
5310-00-013-4530	3	82	5920-00-556-0144	13	23
5310-00-013-4530	13	25	5305-00-558-4889	3	10
5905-00-043-0381	6	19	5355-00-559-8943	5	1
5305-30-043-6639	5	11	5310-00-582-5965	3	64
5310-03-045-3296	13	29	5940-00-614-0537	3	78
5940-00-050-2308	3	57	5930-00-615-7897	5	23
5961-00-050-7499	6	18	5310-00-616-3554	3	11
5961-00-050-7499	7	6	5310-00-616-3554	3	80
5961-00-050-7499	3	12	5935-00-631-1408	13	22
5961-00-050-7499	9	9	5930-00-655-1575	5	21
5961-00-050-7499	10	10	5940-00-660-3634	3	26
5961-00-050-7499	12	22	5940-00-660-3634	3	61
5905-00-051-8005	6	28	5905-00-681-6462	6	34
5905-00-051-8012	6	62	5905-00-681-6462	8	28
5905-00-051-8012	9	43	5905-00-681-6462	9	20
5905-00-351-8012	12	58	5905-00-681-6462	10	23
5305-00-054-5636	3	25	5905-00-681-6462	12	25
5905-00-051-9634	6	61	5905-00-681-8818	6	39
5905-00-057-9634	9	40	5905-00-681-8818	8	18
5905-00-057-9634	12	57	5905-00-681-8818	12	33
5340-00-060-5957	5	7	5905-00-681-9969	6	24
5905-00-061-2415	8	31	5905-00-681-9969	8	37
5905-00-063-4753	6	57	5905-00-681-9969	9	29
5905-00-063-4753	8	32	5905-00-682-4097	6	31
5905-00-063-4753	9	34	5905-00-682-4097	7	9
5905-00-363-4753	12	66	5905-00-682-4097	8	14
5910-00-068-3302	3	65	5905-00-682-4097	9	26
5975-00-074-2072	13	30	5905-00-682-4097	10	29
5905-00-078-8365	8	16	5905-03-682-4097	12	36
6210-00-081-3431	5	20	5905-00-682-4098	6	48
5310-00-082-1404	5	17	5905-00-682-4098	7	10
5905-00-186-2972	1	30	5905-00-682-4098	8	23
5905-00-190-8880	7	12	5905-00-682-4098	9	11
5905-00-190-8880	8	39	5905-00-682-4098	10	13
5905-00-190-8880	12	52	5905-00-682-4098	12	27
5905-00-195-6806	5	33	5905-00-682-4100	6	59
5905-00-195-6806	9	36	5905-00-682-4100	8	21
5905-00-195-6806	13	22	5905-00-682-4100	9	41
5905-00-195-6806	12	43	5905-00-682-4100	10	33
5920-00-199-9498	13	20	5905-00-682-4100	12	24
5940-00-204-8990	3	58	5905-00-682-4101	6	56
5310-00-209-0786	3	24	5905-00-682-4101	7	14
5310-00-209-0788	3	59	5905-00-682-4101	8	13
			5905-00-682-4101	9	14
59S9-00-226-1755	12	70	5905-00-682-4101	10	15
5920-00-235-8358	13	14	5905-00-682-4101	12	37
5935-00-241-0232	2	1	5935-00-682-4104	6	51
5905-30-249-3656	9	47	5905-00-682-4104	7	7
59C5-00-249-4195	9	46	5905-00-682-4104	8	15
5905-00-253-1231	9	27	5905-00-682-4104	9	12
5305-00-253-5603	5	5	5905-00-682-4104	10	12
5305-00-253-5604	3	1	5905-00-682-4104	12	35
5305-00-253-5604	13	17	5905-00-682-4108	6	52
5905-00-256-3361	9	24	5905-00-682-4108	12	26
5905-00-256-8352	12	56	6210-00-682-9833	5	24
5905-00-279-1751	8	27	5905-00-683-2236	6	5S
5905-00-279-1757	6	35	5905-00-683-2236	12	55
5905-00-279-1757	9	24	5905-00-683-2238	6	21
5905-00-279-1757	9	31	5905-00-683-2238	9	42
5905-00-279-1757	10	20	5905-00-685-2238	12	64
5905-00-279-1757	12	63			
5905-00-219-1758	6	32			
5905-00-279-2530	6	54	5905-00-683-2241	6	22
5905-00-279-2530	9	28	5905-00-683-2241	7	13
5905-00-219-2555	8	30	5905-00-683-2241	8	17
5905-00-279-2596	12	38	5905-00-683-2241	9	17
5905-00-279-2626	6	43	5905-00-683-2241	10	25
5905-00-279-2626	8	20	5905-00-683-2241	12	32
5905-00-279-2626	10	31	5940-00-683-4339	13	28
5905-00-279-2626	12	39	5905-00-683-7721	10	27
5905-00-279-2629	8	34	5905-00-683-7723	6	30
5905-00-279-2654	6	42	5905-00-683-7723	9	16
5905-00-279-3505	9	48	5905-00-683-7723	12	31
5905-00-279-3505	12	67	5905-00-683-7724	6	63
5920-00-280-5024	13	15	5905-00-683-7724	9	22
5365-00-282-5322	3	50	5905-00-683-7724	10	24
5940-00-283-5280	3	83	5905-00-683-7724	12	68
5905-00-249-2050	9	44	5905-00-686-3122	8	19
5310-00-514-6674	3	68	5905-00-686-3122	9	38



**SECTION IV**

**TM11-5985-543-34P/NAVELEX 0967-LP-616-1020/TO 31W1-2G-234-2  
NATIONAL STOCK NUMBER AND PART NUMBER INDEX**

<b>STOCK NUMBER</b>	<b>FIG.</b>	<b>ITEM</b>	<b>STOCK NUMBER</b>	<b>FIG.</b>	<b>ITEM</b>
5905-00-686-3369	12	46	5910-00-787-2109	10	3
5905-00-686-3370	7	15	5905-00-801-8272	6	55
5905-00-686-3370	9	13	5905-00-801-8272	12	65
5905-00-686-3370	13	26	5905-00-805-9714	10	17
5905-00-686-3370	12	59	5905-00-807-0059	6	23
5905-00-686-3798	9	37	5905-00-807-0059	7	17
5905-00-686-3798	12	51	5905-00-807-0059	9	15
5905-00-686-3903	7	11	5905-00-807-0059	10	36
5905-00-686-3903	8	33	5905-00-807-4954	6	47
5905-00-686-3903	12	69	5905-00-807-4954	12	28
5905-00-686-9994	12	50	5310-00-809-4058	3	23
5905-00-686-9996	6	64	5310-00-809-8544	5	3
5905-00-686-9996	9	45	5905-00-817-7971	6	50
5905-00-686-9996	12	54	5905-00-817-7971	12	29
5905-00-686-9998	6	37	5910-00-822-8214	8	6
5915-00-688-7158	3	54	5910-00-822-8214	9	3
5905-00-691-0195	9	18	5910-00-822-8214	12	9
5975-00-707-6229	2	7	5910-00-834-9765	3	45
5905-00-721-0597	6	38	5910-00-835-2643	3	13
5905-00-721-0597	7	8	5910-00-835-2719	6	6
5905-00-721-0597	8	35	5940-00-836-7401	3	75
5905-00-721-0597	9	39	5961-00-837-9112	12	23
5905-00-721-0597	10	34	5910-00-838-0869	6	8
5905-00-721-0597	12	47	5910-00-838-0869	8	1
			5910-00-838-0869	9	2
			5910-00-838-0869	10	4
			5910-00-638-0869	12	10
			5961-00-842-9864	6	10
			5961-00-842-9864	7	4
5905-00-723-5251	6	46	5961-00-842-9864	8	8
5905-00-723-5251	8	38	5961-00-842-9864	9	6
5905-00-723-5251	12	48	5961-00-842-9864	10	6
5905-00-726-4413	6	36	5961-00-842-9864	12	14
5905-00-726-4413	10	37	5961-00-865-3448	6	11
5905-00-728-6519	6	25	5961-00-865-3448	6	9
5905-00-752-3186	10	40	5961-00-865-3448	10	7
5935-00-754-8795	13	5	5961-00-865-3448	12	13
5935-00-755-2414	5	14	5935-00-866-4286	3	52
5905-00-761-1899	6	29	5905-00-880-7216	6	27
5905-00-761-1903	6	49	5905-00-882-0061	10	39
5905-00-761-1903	12	34	5905-00-882-0061	12	45
5905-00-762-3667	8	36	5905-00-882-0070	6	40
5905-00-762-3667	13	38	5905-00-882-0070	8	29
5905-00-765-5628	10	18	5905-00-882-0070	9	19
5905-00-766-8363	7	20	5910-00-884-6800	7	2
5905-00-766-8363	8	25	5910-00-884-0800	8	2
5905-00-766-8363	9	23	5910-00-884-0800	10	2
5905-00-766-8363	13	16	5910-00-884-0800	12	4
5905-00-766-8363	12	60	6240-00-892-4420	5	9
5905-00-766-8368	6	45	5950-00-893-8650	12	19
5905-00-766-8368	12	40	5935-00-899-4727	3	17
5905-00-766-8369	7	19	5910-00-902-2812	6	3
5999-00-767-1584	5	15	5910-00-902-2812	8	5
5999-00-767-1584	5	35	5910-00-903-2984	13	12
5905-00-767-2843	6	60	5950-00-903-3387	5	36
5905-00-767-2843	7	18	5910-00-905-4097	8	4
5905-00-767-2843	8	26	7040-00-917-0701	10	41
5905-00-767-2843	9	21	7040-00-917-0702	8	41
5905-00-767-2843	13	14	7040-00-917-0705	7	21
5905-00-767-2843	12	61	7040-00-917-0724	9	50
5905-60-767-3205	9	33	5895-00-917-1923	4	3
5905-00-767-3205	13	19	5915-00-917-9856	3	46
5905-00-767-3213	6	44	5940-00-926-0012	3	77
5905-00-767-3213	12	42	5895-00-926-0806	1	3
5905-00-767-3219	7	16			
5905-00-767-3219	8	40	5935-00-926-7404	5	33
5905-00-767-3219	13	35	5935-00-926-7405	3	16
5905-00-767-3220	9	30	6240-00-926-7603	5	6
5905-00-767-3223	6	41	5935-00-928-1960	2	2
5905-00-767-3223	9	35	5950-00-932-2727	12	20
5905-00-768-5922	10	21	7440-00-933-2490	6	66
5310-00-772-3887	3	63	5935-00-933-2802	6	14
5905-00-774-8125	9	32	5935-00-933-2d02	10	9
5910-00-781-7918	13	6	5935-00-933-2802	12	18
5910-00-783-9403	6	5	5935-00-933-2803	6	16
5910-00-783-9403	7	3	5935-00-933-2803	9	8
5910-00-783-9403	8	7	5935-00-933-2803	12	15
5910-00-783-9403	9	5	5935-00-933-2804	6	13
5910-00-783-9403	10	5	5935-00-933-2804	7	5
5910-00-783-9403	12	1	5935-00-933-2804	8	10

**SECTION IV**

**TM11-5985-543-34P/NAVELEX 0967-LP-616-1020/TO 31W1-2G-234-2  
NATIONAL STOCK NUMBER AND PART NUMBER INDEX**

STOCK NUMBER	FIG.	ITEM	STOCK NUMBER	FIG.	ITEM
5935-00-933-2804	9	1	5999-00-981-9339	8	42
5935-00-933-2804	10	8	5999-00-981-9339	9	51
5935-00-933-2804	12	16	5999-00-981-9339	10	42
5935-00-933-2805	6	15	5999-00-981-9339	11	1
5935-00-933-2805	12	17	5999-00-981-9339	12	71
5953-00-933-4504	13	7			
5915-00-933-4932	3	42	5999-00-981-9339	14	1
5895-00-933-6831	15	0	5999-00-981-9339	15	6
5895-00-933-6832	14	0	5910-00-983-6866	6	9
5995-00-933-6844	2	5	5910-00-983-6866	7	1
5995-00-933-6845	Z	8	5910-00-983-6866	9	1
599 5-00-933-6846	2	6	5910-00-983-6866	10	1
5995-00-933-6847	2	9	5910-00-983-6866	12	11
5995-00-933-6848	2	10	5305-00-984-4989	5	27
5995-00-933-6849	2	4	5305-00-984-4989	13	3
5995-00-933-6850	2	11	5305-00-984-6196	3	31
5995-00-933-6851	2	3	5910-00-987-4627	12	7
5935-00-937-4917	15	1	5905-00-988-2280	6	20
5310-00-950-1310	13	26	5905-00-988-2280	12	30
5310-00-951-4679	3	3	5961-00-995-2310	6	12
5310-00-951-4679	5	12	5961-00-995-2310	12	12
5313-00-951-4619	14	4	5895-00-999-2434	1	4
5310-00-951-4679	15	3	5895-00-999-2436	4	2
5905-00-952-6827	6	26	5895-00-999-2437	4	1
5961-00-978-5966	13	1	5895-00-999-2438	4	6
5999-00-981-9339	6	68	5895-00-999-2441	1	1
5999-00-981-9339	7	22	5895-00-999-2442	4	4

PART NUMBER	FSCM	FIG. NO.	ITEM NO.	PART NUMBER	FSCM	FIG. NO.	ITEM NO.
CE71C123E	81349	13	11	FHN20G	81349	13	23
CE71C332F	81349	13	12	FHZIGM	81349	13	lb
CE71C562E	81349	13	6	FT03-9803	56289	3	77
CK60BX470K	81349	8	6	FOIA125V3-4A	81349	13	15
CK60BX470K	81349	9	3	FOIA250VI-4A	81349	13	14
CK60OX470K	81349	12	9	F02B25JV1-2A	81349	13	20
CK61BX471K	81349	6	9				
CK61BX471K	81349	7	1				
CK61BX471K	81349	9	1	MSU7821-1-9	96906	13	30
CK61BX471K	81349	10	1	MS15795-203	96906	3	3
CK61BX471K	81349	12	11	MS15795-203	96906	5	12
CK62RX152K	81349	7	2	MS15795-204	96906	13	26
CK62BX152K	81349	8	2	MS15795-205	96906	3	5
CK62BX152K	81349	10	2	MS15795-207	96906	3	28
CK62BX152K	81349	12	4	MS16633-12	96906	3	50
CK63BX332K	81349	6	8	MS20364-832A	96906	3	37
CK63BX332K	81349	B	L	MS520417-2	96906	13	21
CK63BX332K	81349	9	2	MS21097-2-26	96906	3	44
CK638X332K	81349	10	4	MS21097-4-26	96906	3	16
CK63BX332K	81349	12	10	MS21318-1	96906	5	5
CKT2AX102M	81349	3	65	MS21318-2	96906	3	1
CL37BCGR5MN3	81349	6	2	MS21318-2	96906	13	17
CS13B8476K	81349	6	7	M524009-2	96906	3	17
CS13B8476K	81349	12	3	M524010-2	96906	3	52
CS138C396K	81349	8	4	MS24018-7	96906	5	14
CS1380226K	81349	6	5	MS24055-2	96906	5	35
CS13BD226K	81349	7	3	MS24056-2	96906	13	5
CS13RD226K	81349	8	7	MS24057-2	96906	13	22
CS13BD226K	81349	9	5	MS25036-11	96906	3	58
CS138D226K	81349	10	5	M525036-57	96906	3	26
CSL38D226K	81349	12	1	MS25036-57	96906	3	61
				MS25036-6	96906	3	83
CS13BE126K	81349	6	3	MS25252-NE2D	96906	5	9
CS138E126K	81349	8	5	MS252526-6	96906	5	24
CS13FE476K	81349	6	1	MS25257-1	96906	5	20
CS13BF05K	81349	10	3	MS27183-10	96906	3	23
				MS27183-3	96906	14	4
CTMniU3VAK	81349	12	6	MS27183-3	96906	15	3
CTMIO4VCK	81349	3	13	MS27183-6	96906	5	17
CTM223VAK	81349	12	2	MS27183-7	96906	5	3
CTM?23VAK	81349	6	6	MS310882-029P	96906	2	1
CTM474VAK	81349	3	45	MS35059-22	96906	5	21
CTM823VAK	56289	12	8	5MS35059-31	96906	5	23
CTM823VAK	81349	6	4	MS35223-14	96906	3	10
CTM823VAK	81349	9	4				
CY-49181G	80058	1	4	MS35223-19	96906	15	2
CZ24BEB004K	81349	3	66	M535225-14	96906	5	11
CZ24BEB474K	81349	3	67				

## SECTION IV

## TM11-5895-543-34P/NAVELEX 0967-LP-616-1020/TO 31W1-2G-234-2

PART NUMBER	FSCM	FIG. NO.	ITEM NO.	PART NUMBER	FSCM	FIG. NO.	ITEM NO.
				RC07GF123J	81349	10	37
				RC07GF152J	81349	6	30
				RC07GF152J	81349	9	16
				RC07GF152J	81349	12	31
MS35225-29	96906	5	27	RC07GF153J	81349	6	39
MS35225-29	96906	13	3	RC07GF153J	81349	8	18
				RC07GF153J	81349	12	33
				RC07GF163J	81349	10	40
				RC07GF202J	81349	7	15
				RC07GF202J	81349	9	13
MS35225-43	96906	3	31	RC07GF202J	81349	10	26
				RC07GF202J	81349	12	59
				RC07GF222J	81349	6	46
				RC07GF222J	81349	8	38
				RC07GF222J	81349	12	48
MS35239-38	96906	13	13	RC07GF241J	81349	6	52
				RC07GF241J	81349	12	26
MS35241-20	96906	3	30	RC07GF242J	81349	6	63
				RC07GF242J	81349	9	22
MS35334-10	96906	3	62	RC07GF242J	81349	10	24
MS35335-29	96906	3	11	RC07GF242J	81349	12	68
MS35335-29	96906	3	80	RC07GF243J	81349	6	38
NS35335-30	96906	3	59	RC07GF243J	81349	7	8
MS35335-33	96906	3	24	RC07GF243J	81349	8	35
MS35335-34	96906	3	68	RC07GF243J	81349	9	39
MS35335-36	96906	3	48	RC07GF243J	81349	10	34
				RC07GF243J	81349	12	47
				RC07GF272J	81349	9	37
				RC07GF272J	81349	12	51
				RC07GF301J	81349	8	19
				RC07GF301J	81349	9	38
				RC07GF302J	81349	6	31
				RC07GF302J	81349	7	9
				RC07GF302J	81349	8	14
				RC07GF302J	81349	9	26
MS35338-25	96906	3	64	RC07GF302J	81349	10	29
MS35338-40	96906	14	5	RC07GF302J	81349	12	36
MS35338-40	96906	15	4	RC07GF331J	81349	12	46
MS35338-43	96906	13	29	RC07GF332J	81349	6	24
MS35431-1	96906	3	78	RC07GF332J	81349	8	37
MS35431-3	96906	3	57	RC07GF332J	81349	9	29
MS35431-7	96906	13	28	RC07GF333J	81349	7	11
MS35649-42	96906	3	35	RC07GF333J	81349	8	33
MS35649-42	96906	3	85	RC07GF333J	81349	12	69
MS35649-42	96906	14	2	RC07GF362J	81349	10	17
MS35649-42	96906	15	5	RC07GF391J	81349	6	65
MS35649-62	96906	3	4	RC07GF391J	81349	12	55
MS35649-62	96906	3	82	RC07GF392J	81349	6	48
MS35649-62	96906	13	25	RC07GF392J	81349	7	10
MS39087-5	96906	5	7	RC07GF392J	81349	8	23
MS51957-2	96906	3	25	RC07GF392J	81349	9	11
MS51967-1	96906	3	63	RC07GF392J	81349	10	13
MS90539-08	96906	12	20	RC07GF392J	81349	12	27
MS90539-15	96906	12	19	RC07GF433J	81349	6	23
MS91528-2K2B	96906	5	1	RC07GF433J	81349	7	17
M21097-2-26	81349	14	6	RC07GF433J	81349	9	15
M21097-5-08	96906	5	33	RC07GF433J	81349	10	36
NF209	05820	6	67	RC07GF472J	81349	6	37
NF209	05820	12	72	RC07GF511J	81349	6	55
NW6-3126	95987	3	56	RC07GF511J	81349	12	65
PL-1119/G	80058	1	1	RC07GF512J	81349	6	22
PL-1120/G	80058	4	4	RC07GF512J	81349	7	13
PL-1121/G	80058	4	5	RC07GF512J	81349	8	17
PL-1122/G	80058	4	6	RC07GF512J	81349	9	17
PL-1123/G	80058	4	1	RC07GF512J	81349	10	25
PL-1124/G	80058	4	2	RC07GF512J	81349	12	32
PP-4540/G	80058	1	3	RC07GF562J	81349	9	18B
RC07GF100J	81349	6	50	RC07GF622J	81349	6	59
RC07GF100J	81349	12	29	RC07GF622J	81349	8	21
RC07GF101J	81349	10	27	RC07GF622J	81349	9	41
RC07GF102J	81349	6	34	RC07GF622J	81349	10	33
RC07GF102J	81349	8	28	RC07GF622J	81349	12	24
RC07GF102J	81349	9	20	RC07GF623J	81349	6	51
RC07GF102J	81349	10	23	RC07GF623J	81349	7	7
RC07GF102J	81349	12	25	RC07GF623J	81349	8	15
RC07GF103J	81349	6	21	RC07GF623J	81349	9	12
RC07GF103J	81349	9	42	RC07GF623J	81349	10	12
RC07GF103J	81349	12	64	RC07GF623J	81349	12	35
RC07GF122J	81349	12	50	RC07GF751J	81349	6	47
RC07GF123J	81349	6	36				

## SECTION IV

## TM11-5895-543-34P/NAVELEX 0967-LP-616-1020/TO 31W1-2G-234-2

PART NUMBER	FSCM	FIG. NO.	ITEM NO.	PART NUMBER	FSCM	FIG. NO.	ITEM NO.
RC0TGF751J	81349	12	28	RL20S682J	81349	6	60
RC07GF752J	81349	6	56	RL20S682J	81349	7	18
RC07GF752J	81349	7	14	RL20S682J	81349	8	26
RC07GF752J	81349	8	13	RL20S682J	81349	9	21
RC0TGF752J	81349	9	14	RL20S682J	81349	10	14
RC07GF752J	81349	10	15	RL20S682J	81349	12	6
RC07GF752J	81349	12	37	RL20S822J	81349	9	33
RC07GF821J	81349	6	64	RL20S822J	81349	10	19
RC07GF821J	81349	9	45	RL20S911J	81349	10	32
RC07GF821J	81349	12	54	RL20S911J	81349	12	41
RC20GF102J	81349	6	33	RN60D1652F	81349	6	29
RC20GF102J	81349	9	36	RN60D2001F	81349	6	20
RC20GF102J	81349	10	22	RN60D2001F	81349	12	30
RC20GF102J	81349	12	43	RN60D2211F	81349	12	30
RC20GF102J	81349	12	43	RN60D2211F	81349	6	19
RC20GF103J	81349	9	49	RN60D2263F	81349	6	26
RC20GF122J	81349	7	12	RN60D2371F	81349	6	49
RC20GF122J	81349	8	39	RN6002371F	81349	12	34
RC20GF122J	81349	12	52	RN60D2492F	81349	6	61
RC20GF152J	81349	6	35	RN60D2492F	81349	9	40
RC200GF1S2J	81349	8	24	RN60D2492F	81349	12	57
RC20GF152J	81349	9	31	RN60D2551F	81349	6	25
RC20GF152J	81349	10	2	RN60D4022F	81349	6	28
RC20GF152J	81349	12	63	RN60D5112F	81349	8	16
RC20GF302J	81349	8	27	RN60D7321F	81349	6	62
RC20GF392J	81349	9	48	RN60D7321F	81349	9	43
RC20GF392J	81349	12	67	RN60D7321F	81349	12	58
RC20GF623J	81349	9	47	RN6008452F	81349	6	2
RC20OF750J	81349	6	32	RW57G400	81349	2	44
RC20GF152J	81349	9	46	SMB532003	80063	13	19
				SM8532007	80063	3	69
				SMB532008	80063	3	74
RC32GF621J	81349	8	34	SM8532012	80063	3	79
RC32GF681J	81349	6	43	SM8532013	80063	3	54
RC32GF681J	81349	8	20	SM8532032	80063	15	1
RC32GF681J	81349	10	31	SM8546891	80063	3	18
RC32GF681J	81349	12	39	SMB546899	80063	3	49
				SM8546900	80063	3	51
				SMB546941	80063	3	21
				5M8546946	80063	2	2
RC32GF75J	81349	9	44	SMB546959	80063	13	10
RC32GF820J	81349	6	42	SM8546960	80063	13	9
RC32GF911J	81349	8	30	5M6546910-01	80063	3	46
RC42GF102J	81349	9	24	SM8546970-02	80063	3	42
RC42GF121J	81349	12	38	SM8551595	80063	12	23
RC42GF122J	81349	12	56	SM8551603	80063	33	12
RC42GF152J	81349	6	54	SMC532036-01	80063	2	16
RC42GF152J	81349	9	28	SMC532036-02	80063	2	12
RC42GF391J	81349	9	27	5MC532036-03	80063	2	18
RC42GF511SJ	81349	10	30	SMC532036-04	80063	2	13
RL20S103J	81349	8	36	SMC532036-05	80063	2	15
R120S103J	81349	10	38	SMC532036-06	80063	2	17
RL20S112J	81349	8	31	5MC532036-07	80063	2	14
RL20S123J	81349	7	19	SMC532036-08	80063	2	19
RL20S132J	81349	6	57	SMC532043	80063	3	53
RL20S132J	81349	8	32	SMC546894	80063	13	7
RL20S132J	81349	9	34	SMC546896-01	80063	3	10
RL20S132J	81349	12	66	SMC546896-02	80063	5	10
RL20S152J	81349	10	21	SMC546896-03	80063	13	18
RL20S153J	81349	6	44	SMC546904	80063	3	39
RL20S153J	81349	12	42	SMC546906	80063	13	2
RL20S183J	81349	9	32	SMC546911	80063	3	38
RL20S202J	81349	7	16	SMC546914	80063	5	26
RL20S202J	81349	8	40	SMC546915	80063	3	32
RL20S202J	81349	10	35	SMC546952	80063	5	3
RL20S222J	81349	9	30	SMD532022	80063	15	0
RL21S302J	81349	6	45	SMD532026	80063	14	0
RL20S302J	81349	12	40	SMD532040	80063	13	24
RL20S332J	81349	10	18	SMD546873	80063	4	3
RL20S333J	81349	7	20	SMD546879	80063	3	40
PL20S333J	81349	8	25	SMD546880	80063	3	43
RL20S333J	81349	9	23	SMD546881	80063	5	30
RL21S333J	81349	10	16	SMD546886	80063	3	15
RL20S333J	81349	12	60	SMD546889	80063	3	9
RL20S362J	81349	6	41	SMD546898	80063	3	73
RL20S362J	81349	9	35	SMD546905	80063	13	4
RL20S472J	81349	10	39	SMD546908	80063	3	41
RL20S472J	81349	12	45	SMD546917	80063	5	32
RL20S562J	81349	6	40	SMD546918	80063	5	8
RL20S562J	81349	8	29	SMD546919	80063	3	6
RL20S562J	81349	9	19	SMD546935	80063	5	34

**SECTION IV**

**TM11-5895-543-34P/NAVELEX 0967-LP-616-1020/TO 31W1-2G-234-2**

<b>PART NUMBER</b>	<b>FSCM</b>	<b>FIG. NO.</b>	<b>ITEM NO.</b>		<b>PART NUMBER</b>	<b>FSCM</b>	<b>FIG. NO.</b>	<b>ITEM NO.</b>
SMD546953	80063	3	36	105-734	74970		6	14
SMD546972-01	80063	2	3	105-734	74970		10	9
SM0546972-02	80063	2	11	105-734	74970		12	18
5M0546972-03	80063	2	4	105-737	74970		6	13
SMD546972-04	80063	2	10	105-737	74970		7	5
SMD546972-05	80063	2	9	105-737	74970		8	10
SM0D546972-06	80063	2	6	105-737	74970		9	7
5M0546972-07	80063	2	8	105-737	74970		10	8
SMD546972-08	80063	2	5	105-737	74970		12	16
SMD551597	80063	3	47	2N2219	81349		6	18
SN-395/G	80058	1	2	2N2219	81349		7	6
SROZN3031MPC1P4T	81349	5	19	2N2219	81349		8	12
SR02N30B1MPC1P6T	81349	5	25	2N2219	81349		9	9
5203-100BLUE	18677	6	66	2N2219	81349		10	10
S203-100DKGRN	18677	10	41	2N2219	81349		12	22
S203-100PURPLE	18677	8	41	2N2905	01295		6	17
SZ203-1000WHITE	18677	7	21	2N2905	01295		8	11
5203-100YELLOW	18617	9	50	2N2905	01295		9	10
1N1614	81349	13	1	2N2905	01295		10	11
1N691	81349	6	11	2N2905	01295		12	21
1N691	81349	8	9	257810	81349		3	75
1N691	81349	10	7	267810	81349		3	76
1N691	81349	12	13	26TB12	56289		3	8
1N752A	81349	6	12	380	08806		5	6
1N752A	81349	12	12	39D0208G006GJ4	56289		12	7
1N914	81349	6	10	5001-1923	91662		6	68
1N914	81349	7	4	5001-1923	91662		7	22
1N914	81349	8	8	5001-1923	91662		8	42
1N914	81349	9	6	5001-1923	91662		9	51
1N914	81349	10	6	5001-1923	91662		10	42
1N914	81349	12	14	5001-1923	91662		11	1
10194DAP	07047	12	70	5001-1923	91662		12	71
1025-60	99800	5	36	5001-1923	91662		14	1
105-732	74970	6	16	5001-1923	91662		15	6
105-732	74970	9	8	5201-0223	91662		5	15
105-732	74970	12	15	5331	59730		2	7
105-733	74970	6	15	62-5201-4112	91662		5	28
105-733	74970	12	17	62-5201-4122	91662		5	29

**LATEST NATIONAL STOCK NUMBER INDEX**

<b>STOCK NUMBER</b>	<b>FIG.</b>	<b>ITEM</b>	<b>STOCK NUMBER</b>	<b>FIG.</b>	<b>ITEM</b>
5910-00-110-0932	12	5	5910-00-835-2719	12	2
5905-00-110-7622	8	22			
5905-00-111-4845	6	58			
5905-00-111-4845	12	62			
5910-00-156-7293	8	3			
5905-00-247-8738	6	53			
5905-00-247-8738	9	25	5940-00-889-4815	3	76
5905-00-247-8738	12	49	5935-00-926-7403	14	6
5905-00-443-7796	10	28	5305-00-983-6730	14	3
5905-00-463-9584	12	53	5895-00-999-2439	4	5
5310-00-543-2410	14	5	5895-00-999-2440	1	2
5310-00-543-2410	15	4			
5910-00-835-2710	12	6			

**LATEST NATIONAL PART NUMBER INDEX**

<b>PART NUMBER</b>	<b>FSCM</b>	<b>FIG. NO.</b>	<b>ITEM NO.</b>		<b>PART NUMBER</b>	<b>FSCM</b>	<b>FIG. NO.</b>	<b>ITEM NO.</b>
CSR13G126M	81349	12	4	RCR32G620JS	81349		12	53
M535206-218	96906	14	3	RCR32G750JS	81349		6	53
RCR07G201JS	81349	6	58	RRCR32G750JS	81349		9	25
RCR07G201JS	81349	12	62	RRCR32G750JS	81349		12	49
RCRO7G682JS	81349	8	22	SCM686GP015B4	01295		8	3
RCR32G241JS	81349	10	28					

NOTE: SEE PAGE 74 FOR ADDITIONAL LATEST NATIONAL STOCK NUMBER AND PART NUMBER ASSIGNMENTS

**SECTION IV**  
**NATIONAL STOCK NUMBER AND PART NUMBER INDEX**  
**ADDITIONAL LATEST NATIONAL STOCK NUMBER ASSIGNMENTS**      **ADDITIONAL LATEST PART NUMBER ASSIGNMENTS**

<b>STOCK NUMBER</b>	<b>FIG. NO.</b>	<b>ITEM NO.</b>	<b>PART NUMBER</b>	<b>FSCM</b>	<b>FIG. NO.</b>	<b>ITEM NO.</b>
5310-00-045-3299	3	29	JAN2N2905A	81349	6	17
5310-00-045-3299	5	4	JAN2N2905A	81349	8	11
5310-00-045-4007	3	20	JAN2N2905A	81349	9	10
5310-00-045-4007	3	81	JAN2N2905A	81349	10	11
5310-00-045-4007	5	18	JAN2N2905A	81349	12	21
5310-00-045-4007	13	27	MS35190-264	96906	3	72
5905-00-185-8510	9	49	MS35191-272	96906	5	22
5310-00-543-2410	3	34	M5S35206-216	96906	3	2
5310-00-543-2410	3	84	M535206-218	96906	3	70
5310-00-543-2410	5	13	M5S35206-219	96906	3	33
5940-00-818-8903	3	8	MS35206-230	96906	3	55
5305-00-889-2998	3	2	MS35206-230	96906	5	16
5305-00-889-3000	3	55	M5S35206-231	96906	3	14
5305-00-889-3000	5	16	MS35206-231	96906	3	71
5305-00-889-3001	3	14	MS35206-245	96906	3	27
5305-00-889-3001	3	71	M535206-245	96906	5	2
5961-00-949-1440	6	17	M535206-25	96906	3	19
5961-00-949-1440	8	11	MS35206-25	96906	13	8
5961-00-949-1440	9	10	MS35206-281	96906	3	22
5961-00-949-1440	10	11	MS35206-281	96906	3	60
5961-00-949-1440	12	21	M535338-40	96906	3	34
5305-00-957-6641	3	72	MS35338-40	96906	3	84
5305-00-983-6730	3	70	MS35338-40	96906	5	13
5305-00-984-4976	3	33	M5S35338-41	96906	3	20
5305-00-984-4988	3	19	M5S35338-41	96906	3	81
5305-00-984-4988	13	8	MS35338-41	96906	5	18
5305-00-984-6193	3	27	MS35338-41	96906	13	27
5305-00-984-6193	5	2	M535338-42	96906	3	29
5305-00-984-7363	5	22	M535338-42	96906	5	4
5305-00-988-1725	3	22				
5305-00-988-1725	3	60				

By order of the Secretaries of the Army, the Navy, and the Air Force:

BERNARD W. ROGERS  
*General, United States Army*  
*Chief of Staff*

Official:

J.C. PENNINGTON  
*Brigadier General, United States Army*  
*The Adjutant General*

EARL B. FOWLER  
*Rear Admiral, United States Navy*  
*Commander, Naval Electronic*  
*Systems Command*

DAVID C. JONES, *General, USAF*  
*Chief of Staff*

Official:

F.M. ROGERS, *General, USAF*  
*Commander, Air Force Logistics Command*

Distribution:

*Active Army:*

USAINSCOM(2)	GENDEPS(2)except
USASAE(1)	Pirmasens(10)
DARCOM(1)	SigDep(2)
TRADOC	SigSecGENDEPS(2)
OSMajComd(5)	SigFLDMS(1)
USACOMZEUR	USAERDRAW(1)
USAREUR(5)	FortCarson(5)
TECOM(2)	FtRichardson(ECOMOfc)(1)
USACC(10)	DCA(FERqn)(2)
USACC-EUR(25)	DCA(SEA)(2)
USACC-A(5)	DCA(Spain,EuropeArea)(2)
HQ,7thSigComd(5)	DCA(Alaskan Area)(2)
SigGp(USACC)Taiwan(3)	UnitsorgunderfoITOE(1)
USASATCOMA(2)	11-75
USACSA(4)	11-85
USACSA(5)	11-95
USAICS(3)	11-98
7 <sup>th</sup> &8thArmies(4)	11-137
Corps(2)	11-302
ArmyDepots(2)except	11-347
ATAD(10)	11-367
LBAD(10)	11-368
SAAD(25)	11-500(AA-CC)
TOAD(14)	29-134
USAERDAA	29-136

NG: None

USAR: None

For explanation of abbreviations used see, AR 310-50

RECOMMENDED CHANGES TO EQUIPMENT TECHNICAL PUBLICATIONS



THEN... JOT DOWN THE DOPE ABOUT IT ON THIS FORM, CAREFULLY TEAR IT OUT, FOLD IT AND DROP IT IN THE MAIL!

**SOMETHING WRONG WITH THIS PUBLICATION?**

FROM: (PRINT YOUR UNIT'S COMPLETE ADDRESS)

DATE SENT

PUBLICATION NUMBER

TM 11-5825-270-10

PUBLICATION DATE

23 Jul 81

PUBLICATION TITLE

Radio Frequency R-2176/FRN

BE EXACT... PIN-POINT WHERE IT IS

PAGE NO.	PARA-GRAPH	FIGURE NO.	TABLE NO.

IN THIS SPACE TELL WHAT IS WRONG AND WHAT SHOULD BE DONE ABOUT IT:

TEAR ALONG PERFORATED LINE

PRINTED NAME, GRADE OR TITLE, AND TELEPHONE NUMBER

SIGN HERE:

DA FORM 2028-2 JUL 79

PREVIOUS EDITIONS ARE OBSOLETE.

P.S.—IF YOUR OUTFIT WANTS TO KNOW ABOUT YOUR RECOMMENDATION MAKE A CARBON COPY OF THIS AND GIVE IT TO YOUR HEADQUARTERS.





